

DWG - 01

WINDOW HEAD DETAIL

SCALE - 1:2

## ALPINE STONE VENEER CLADDING SYSTEM VERSION - 16/03/2016

- THESE DRAWINGS MUST BE READ IN CONJUNCTION WITH THE LIST OF SPECIFIED/ACCEPTED PRODUCTS SUPPLIED WITH THE ALPINE STONE TECHNICAL MANUAL.

- SUBSTRATE TO BE PREPPED READY TO APPLY ALPINE STONE VENEER TO. THIS MUST COMPLY WITH ALL RELEVANT STANDARDS AND REQUIREMENTS e.g. COUNCIL, NZBC, ALPINE STONE AND OTHER PRODUCTS DETAILS.

- ANY SCRIBERS, PEF ROD, RENDERS, SEALERS etc (OTHER THAN THE SEALER SCRATCH COAT APPLIED BY ALPINE STONE) REQUIRED AS PART OF THE CONSTRUCTION DETAIL BEFORE AND AFTER INSTALLATION WILL NOT BE DONE BY ALPINE STONE OR IT'S INSTALLERS.



REFER TO COLOURED 3D DETAILS  
FOR FURTHER INFORMATION &  
CLARIFICATION

WINDOW JOINERY

PROPRIETARY SUPPORT BLOCKS BY  
JOINERY MANUFACTURER

5mm GAP BEHIND & 6mm DRAINAGE  
GAP UNDER WINDOW FLANGE

MIN. 8mm COVER OF JOINERY TO FIBRE  
CEMENT SHEET

STONE SILL WITH 15° MIN. SLOPE

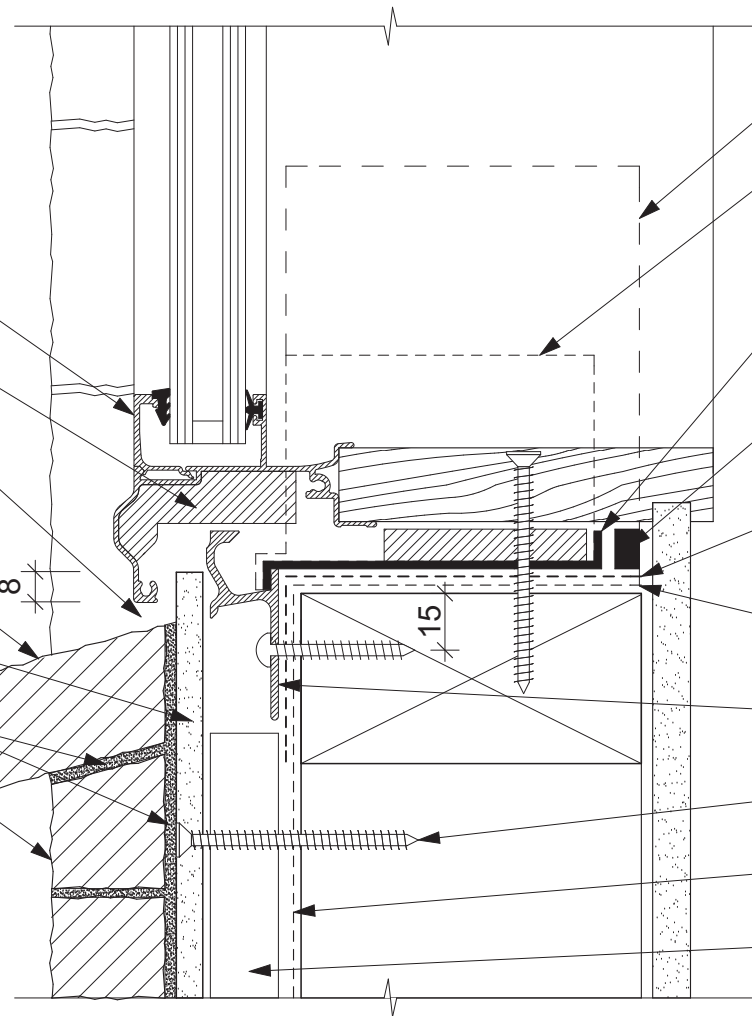
BGC STONESHEET OR SUMNER BOARD

ALPINE STONE ADHESIVE/ MORTAR

ALPINE STONE VENEER CLADDING

FOR RIGID AIR BARRIERS FOLLOW  
MANUFACTURER'S SPECIFICATIONS

FLEXIBLE FLASHING TAPE MAY BE  
INSTALLED TO ENTIRE SILL,  
HOWEVER THIS IS NOT REQUIRED  
UNDER THE SPECIFIED SILL TRAY



TAPE SILL TRAY END CAPS BACK TO  
WALL UNDERLAY WITH SPECIFIED TAPE

SPECIFIED SILL TRAY END CAPS  
ADHERED TO ENDS OF SILL TRAY

SPECIFIED SILL TRAY WITH SUPPORT  
BLOCKS ADHERED AT FIXING POINTS

CONTINUOUS AIRSEAL INSTALLED TO  
EDGE OF SILL TRAY

SPECIFIED FLEXIBLE FLASHING TAPE  
TO CORNERS & LAP ONTO FACE OF  
WALL UNDERLAY 50mm

WALL UNDERLAY DRESSED INTO  
OPENING

WANZ WINDOW SUPPORT BAR  
LOCATED UNDER LIP OF SILL TRAY

FIBRE CEMENT SHEET FIXINGS AS PER  
ALPINE STONE TECHNICAL MANUAL

FRAME PROTECTION SYSTEM OR RIGID  
AIR BARRIER

SPECIFIED CAVITY BATTENS

DWG - 02

WINDOW SILL DETAIL

SCALE - 1:2

## ALPINE STONE VENEER CLADDING SYSTEM

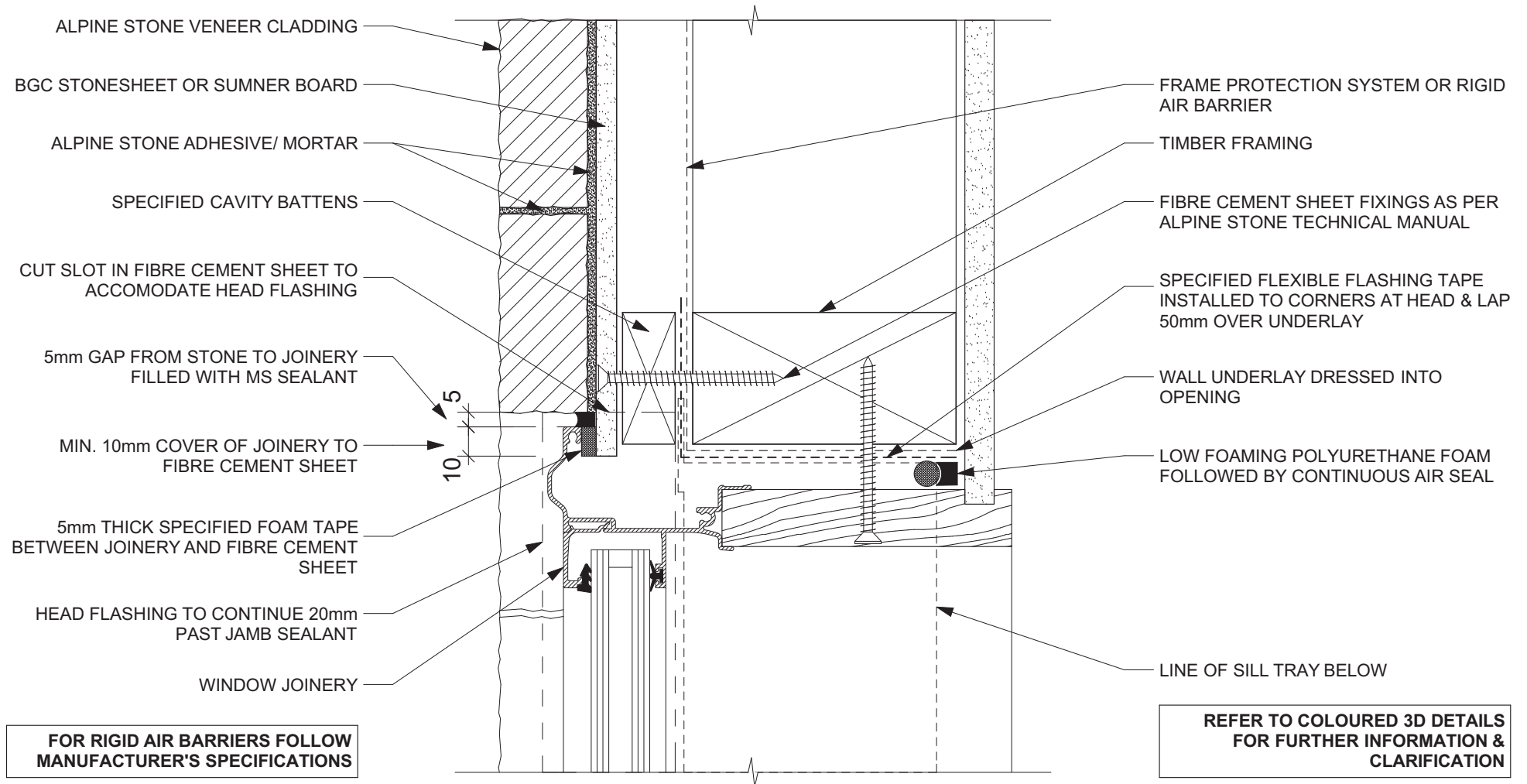
VERSION - 16/03/2016

- THESE DRAWINGS MUST BE READ IN CONJUNCTION WITH THE LIST OF SPECIFIED/ACCEPTED PRODUCTS SUPPLIED WITH THE ALPINE STONE TECHNICAL MANUAL.

- SUBSTRATE TO BE PREPPED READY TO APPLY ALPINE STONE VENEER TO. THIS MUST COMPLY WITH ALL RELEVANT STANDARDS AND REQUIREMENTS e.g. COUNCIL, NZBC, ALPINE STONE AND OTHER PRODUCTS DETAILS.

- ANY SCRIBERS, PEF ROD, RENDERERS, SEALERS etc (OTHER THAN THE SEALER SCRATCH COAT APPLIED BY ALPINE STONE) REQUIRED AS PART OF THE CONSTRUCTION DETAIL BEFORE AND AFTER INSTALLATION WILL NOT BE DONE BY ALPINE STONE OR IT'S INSTALLERS.





DWG - 03

WINDOW JAMB DETAIL

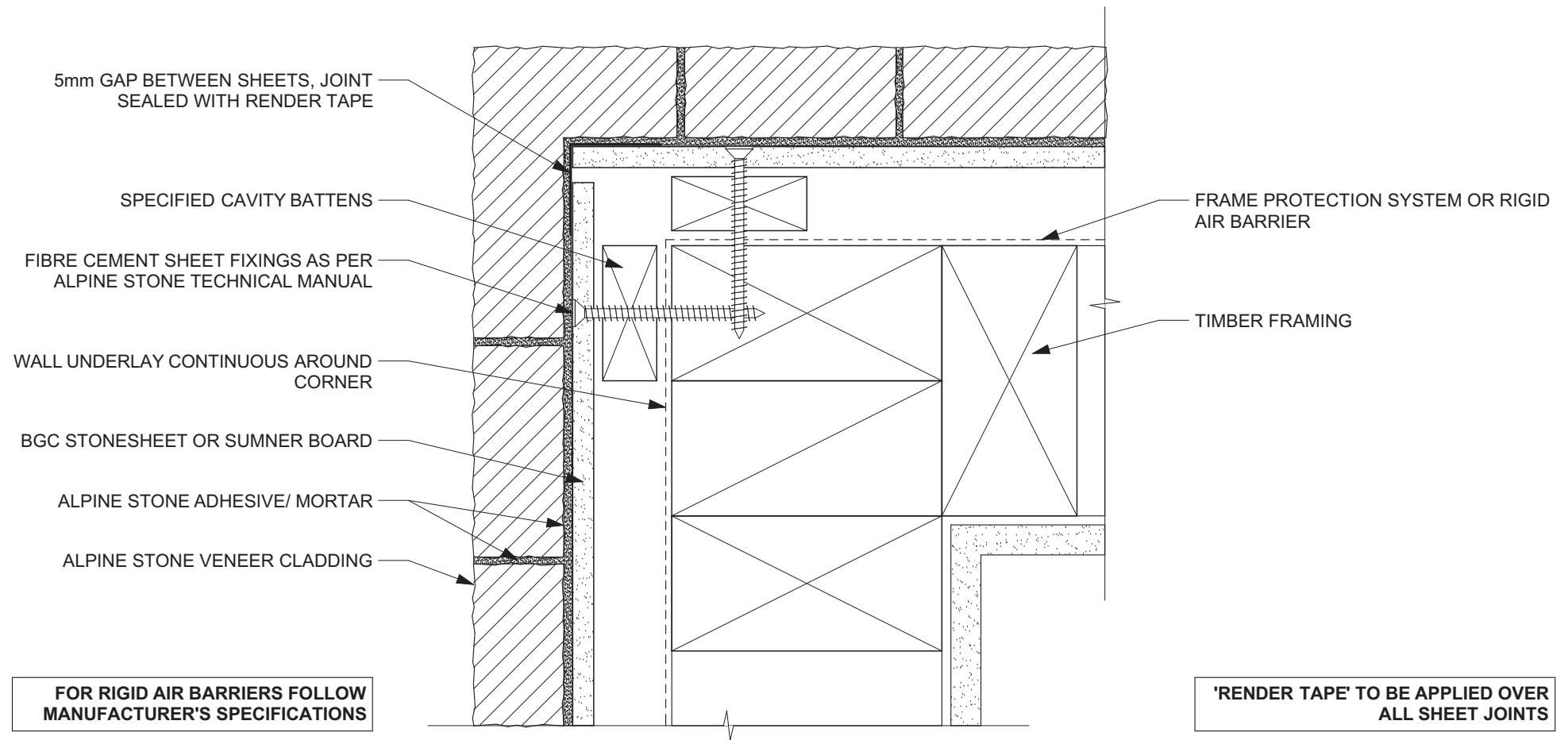
SCALE - 1:2

## ALPINE STONE VENEER CLADDING SYSTEM

VERSION - 16/03/2016

- THESE DRAWINGS MUST BE READ IN CONJUNCTION WITH THE LIST OF SPECIFIED/ACCEPTED PRODUCTS SUPPLIED WITH THE ALPINE STONE TECHNICAL MANUAL.
- SUBSTRATE TO BE PREPPED READY TO APPLY ALPINE STONE VENEER TO. THIS MUST COMPLY WITH ALL RELEVANT STANDARDS AND REQUIREMENTS e.g. COUNCIL, NZBC, ALPINE STONE AND OTHER PRODUCTS DETAILS.
- ANY SCRIBERS, PEF ROD, RENDERS, SEALERS etc (OTHER THAN THE SEALER SCRATCH COAT APPLIED BY ALPINE STONE) REQUIRED AS PART OF THE CONSTRUCTION DETAIL BEFORE AND AFTER INSTALLATION WILL NOT BE DONE BY ALPINE STONE OR ITS INSTALLERS.





DWG - 04

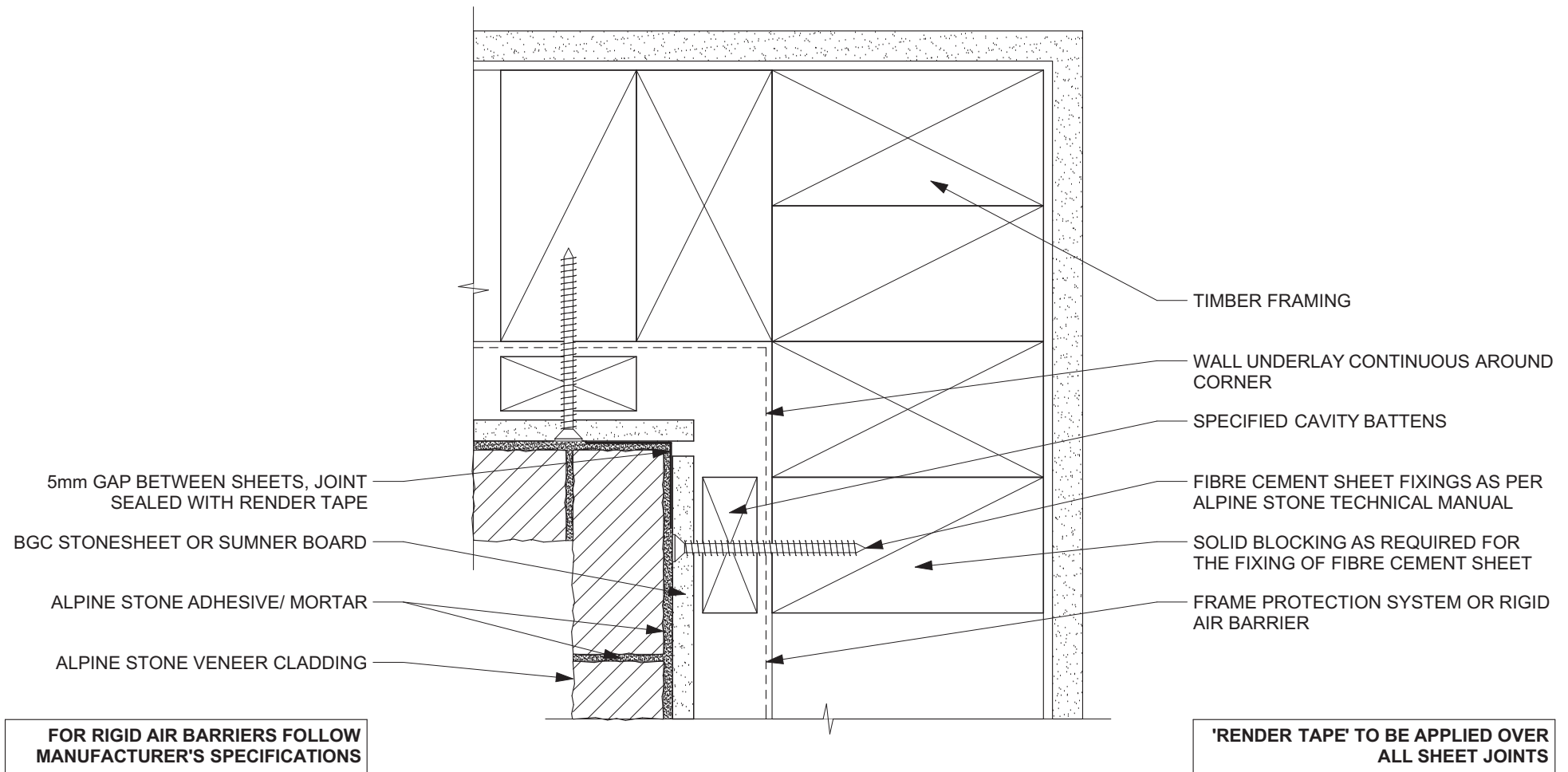
PLAN VIEW OF EXTERNAL CORNER DETAIL

SCALE - 1:2

## ALPINE STONE VENEER CLADDING SYSTEM VERSION - 16/03/2016

- THESE DRAWINGS MUST BE READ IN CONJUNCTION WITH THE LIST OF SPECIFIED/ACCEPTED PRODUCTS SUPPLIED WITH THE ALPINE STONE TECHNICAL MANUAL.
- SUBSTRATE TO BE PREPPED READY TO APPLY ALPINE STONE VENEER TO. THIS MUST COMPLY WITH ALL RELEVANT STANDARDS AND REQUIREMENTS e.g. COUNCIL, NZBC, ALPINE STONE AND OTHER PRODUCTS DETAILS.
- ANY SCRIBERS, PEF ROD, RENDERS, SEALERS etc (OTHER THAN THE SEALER SCRATCH COAT APPLIED BY ALPINE STONE) REQUIRED AS PART OF THE CONSTRUCTION DETAIL BEFORE AND AFTER INSTALLATION WILL NOT BE DONE BY ALPINE STONE OR IT'S INSTALLERS.





DWG - 05

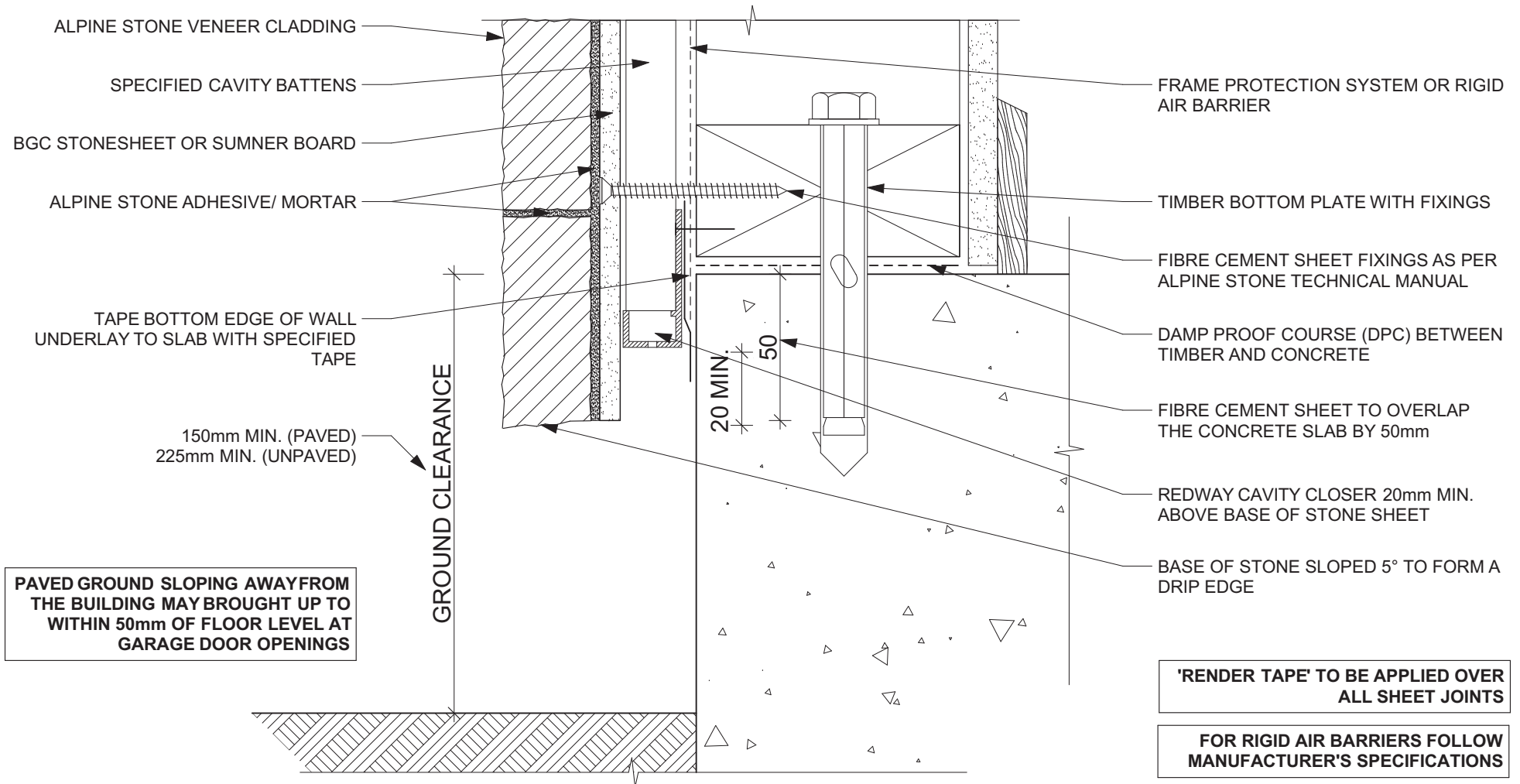
PLAN VIEW OF INTERNAL CORNER DETAIL

SCALE - 1:2

## ALPINE STONE VENEER CLADDING SYSTEM VERSION - 16/03/2016

- THESE DRAWINGS MUST BE READ IN CONJUNCTION WITH THE LIST OF SPECIFIED/ACCEPTED PRODUCTS SUPPLIED WITH THE ALPINE STONE TECHNICAL MANUAL.
- SUBSTRATE TO BE PREPPED READY TO APPLY ALPINE STONE VENEER TO. THIS MUST COMPLY WITH ALL RELEVANT STANDARDS AND REQUIREMENTS e.g. COUNCIL, NZBC, ALPINE STONE AND OTHER PRODUCTS DETAILS.
- ANY SCRIBERS, PEF ROD, RENDERS, SEALERS etc (OTHER THAN THE SEALER SCRATCH COAT APPLIED BY ALPINE STONE) REQUIRED AS PART OF THE CONSTRUCTION DETAIL BEFORE AND AFTER INSTALLATION WILL NOT BE DONE BY ALPINE STONE OR IT'S INSTALLERS.





DWG - 06

SLAB EDGE DETAIL

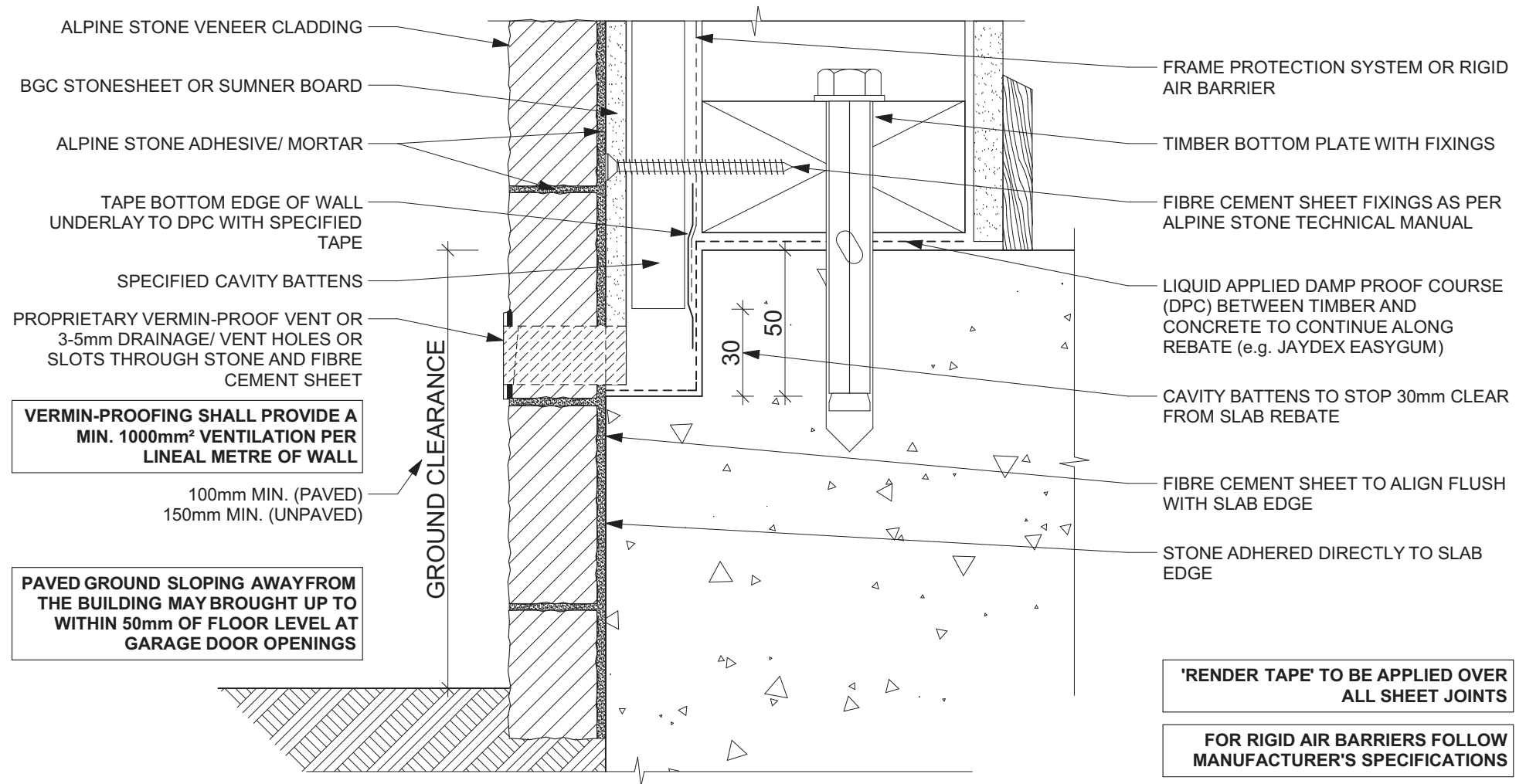
SCALE - 1:2

## ALPINE STONE VENEER CLADDING SYSTEM

VERSION - 16/03/2016

- THESE DRAWINGS MUST BE READ IN CONJUNCTION WITH THE LIST OF SPECIFIED/ACCEPTED PRODUCTS SUPPLIED WITH THE ALPINE STONE TECHNICAL MANUAL.
- SUBSTRATE TO BE PREPPED READY TO APPLY ALPINE STONE VENEER TO. THIS MUST COMPLY WITH ALL RELEVANT STANDARDS AND REQUIREMENTS e.g. COUNCIL, NZBC, ALPINE STONE AND OTHER PRODUCTS DETAILS.
- ANY SCRIBERS, PEF ROD, RENDERS, SEALERS etc (OTHER THAN THE SEALER SCRATCH COAT APPLIED BY ALPINE STONE) REQUIRED AS PART OF THE CONSTRUCTION DETAIL BEFORE AND AFTER INSTALLATION WILL NOT BE DONE BY ALPINE STONE OR ITS INSTALLERS.





DWG - 07

REBATED SLAB EDGE DETAIL

SCALE - 1:2

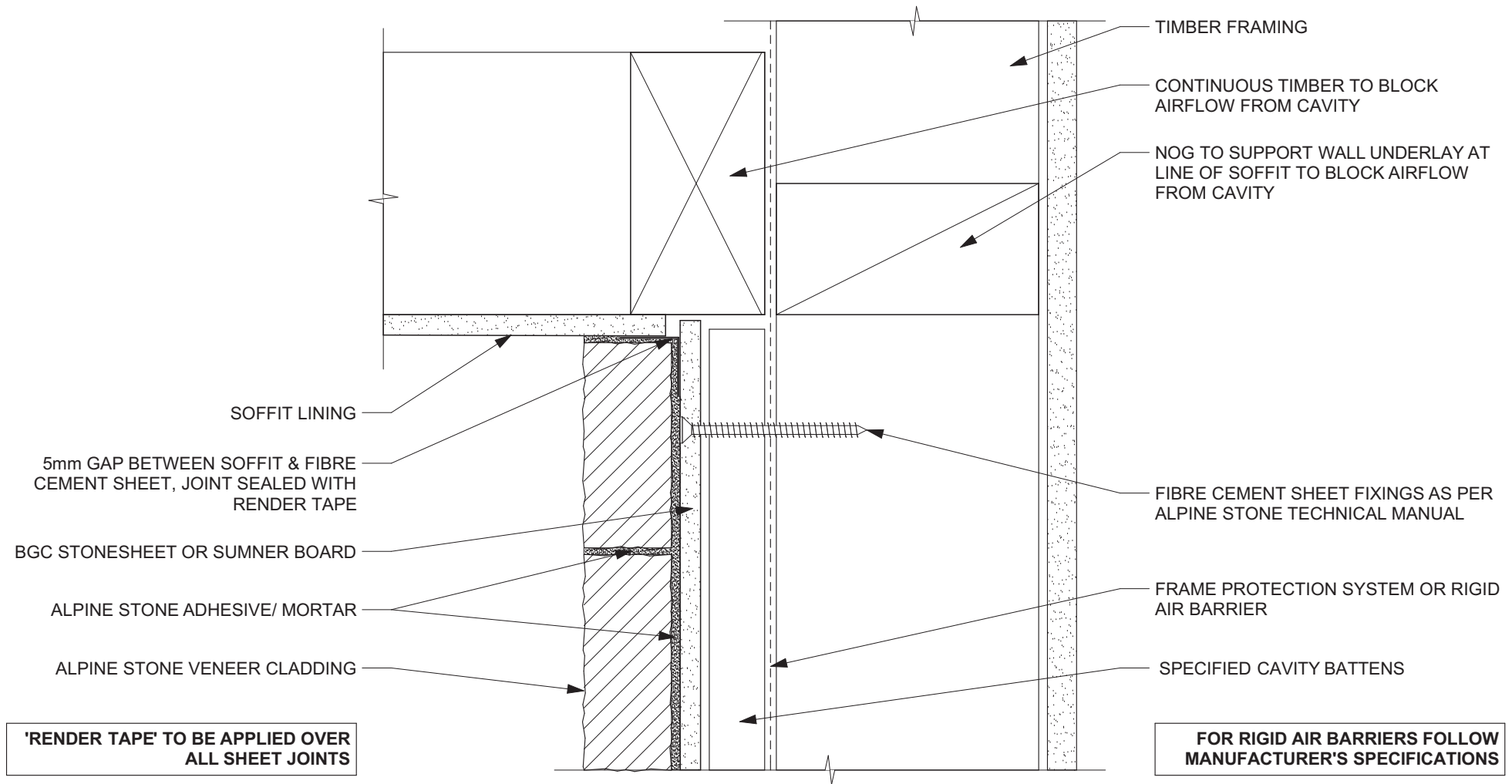
# ALPINE STONE VENEER CLADDING SYSTEM

VERSION - 16/03/2016

- THESE DRAWINGS MUST BE READ IN CONJUNCTION WITH THE LIST OF SPECIFIED/ACCEPTED PRODUCTS SUPPLIED WITH THE ALPINE STONE TECHNICAL MANUAL.
- SUBSTRATE TO BE PREPPED READY TO APPLY ALPINE STONE VENEER TO. THIS MUST COMPLY WITH ALL RELEVANT STANDARDS AND REQUIREMENTS e.g. COUNCIL, NZBC, ALPINE STONE AND OTHER PRODUCTS DETAILS.
- ANY SCRIBERS, PEF ROD, RENDERERS, SEALERS etc (OTHER THAN THE SEALER SCRATCH COAT APPLIED BY ALPINE STONE) REQUIRED AS PART OF THE CONSTRUCTION DETAIL BEFORE AND AFTER INSTALLATION WILL NOT BE DONE BY ALPINE STONE OR IT'S INSTALLERS.







DWG - 08

SOFFIT DETAIL

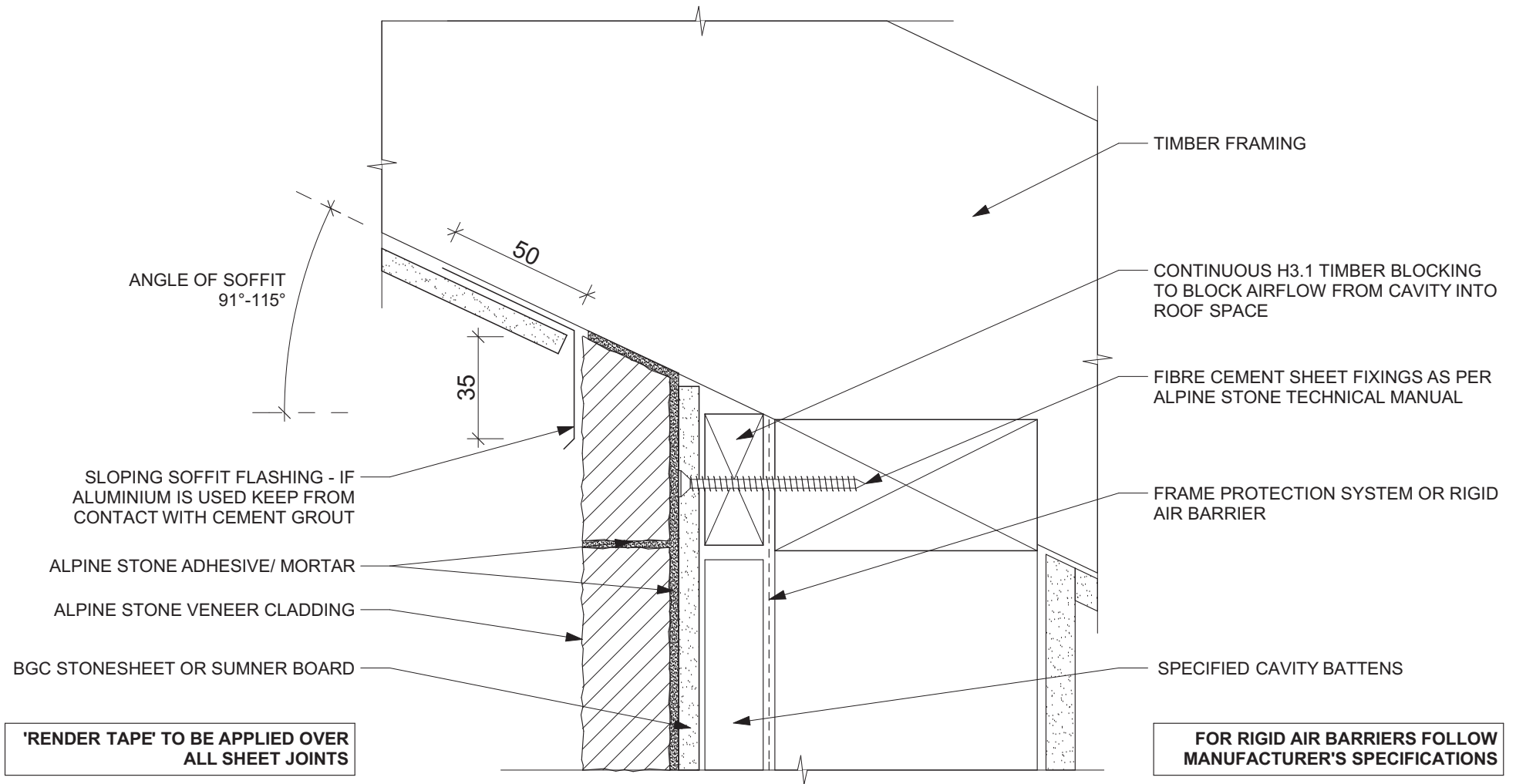
SCALE - 1:2

## ALPINE STONE VENEER CLADDING SYSTEM VERSION - 16/03/2016

- THESE DRAWINGS MUST BE READ IN CONJUNCTION WITH THE LIST OF SPECIFIED/ACCEPTED PRODUCTS SUPPLIED WITH THE ALPINE STONE TECHNICAL MANUAL.
- SUBSTRATE TO BE PREPPED READY TO APPLY ALPINE STONE VENEER TO. THIS MUST COMPLY WITH ALL RELEVANT STANDARDS AND REQUIREMENTS e.g. COUNCIL, NZBC, ALPINE STONE AND OTHER PRODUCTS DETAILS.
- ANY SCRIBERS, PEF ROD, RENDERERS, SEALERS etc (OTHER THAN THE SEALER SCRATCH COAT APPLIED BY ALPINE STONE) REQUIRED AS PART OF THE CONSTRUCTION DETAIL BEFORE AND AFTER INSTALLATION WILL NOT BE DONE BY ALPINE STONE OR ITS INSTALLERS.







DWG - 09

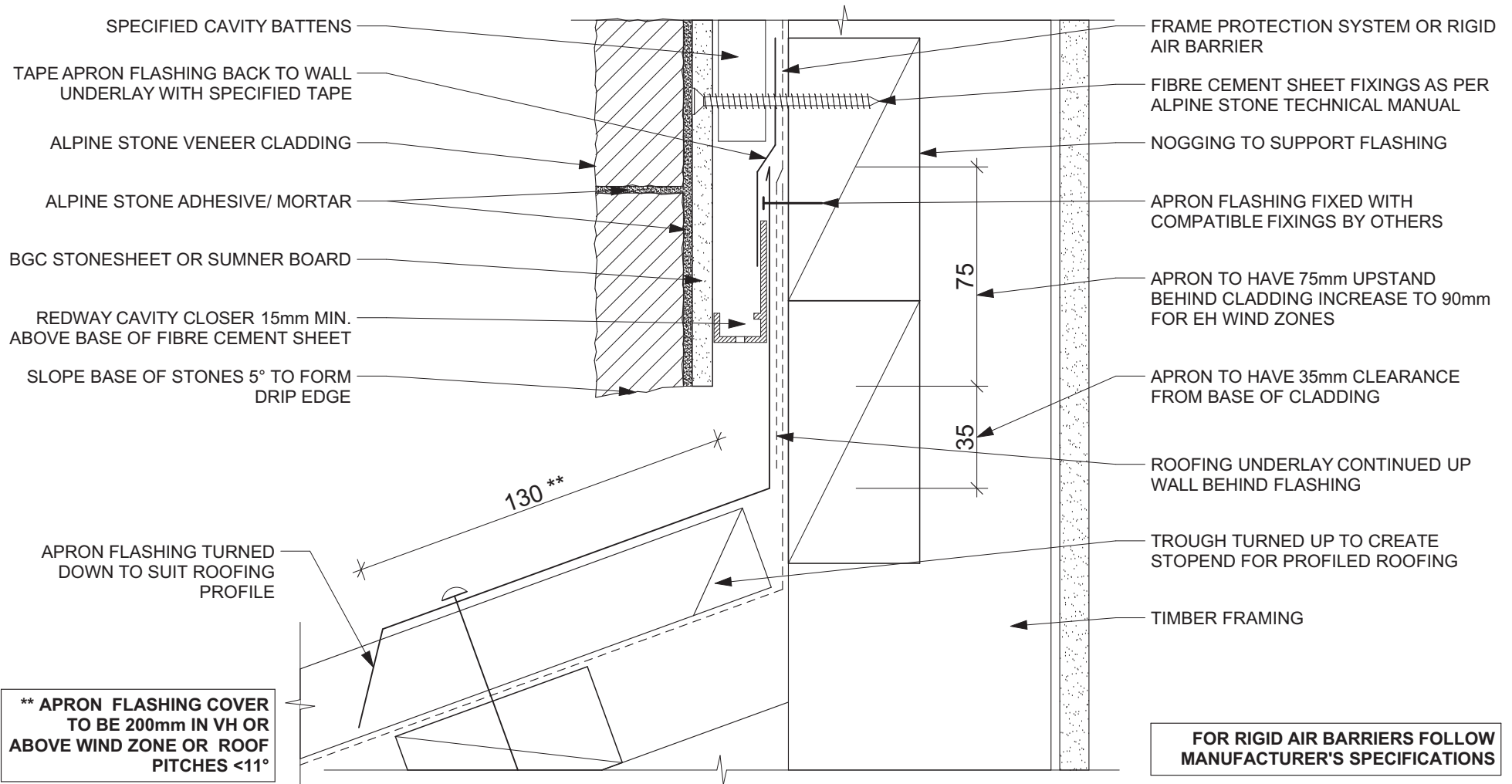
SLOPING SOFFIT DETAIL

SCALE - 1:2

## ALPINE STONE VENEER CLADDING SYSTEM VERSION - 16/03/2016

- THESE DRAWINGS MUST BE READ IN CONJUNCTION WITH THE LIST OF SPECIFIED/ACCEPTED PRODUCTS SUPPLIED WITH THE ALPINE STONE TECHNICAL MANUAL.
- SUBSTRATE TO BE PREPPED READY TO APPLY ALPINE STONE VENEER TO. THIS MUST COMPLY WITH ALL RELEVANT STANDARDS AND REQUIREMENTS e.g. COUNCIL, NZBC, ALPINE STONE AND OTHER PRODUCTS DETAILS.
- ANY SCRIBERS, PEF ROD, RENDERS, SEALERS etc (OTHER THAN THE SEALER SCRATCH COAT APPLIED BY ALPINE STONE) REQUIRED AS PART OF THE CONSTRUCTION DETAIL BEFORE AND AFTER INSTALLATION WILL NOT BE DONE BY ALPINE STONE OR ITS INSTALLERS.





DWG - 10

TRANSVERSE APRON DETAIL

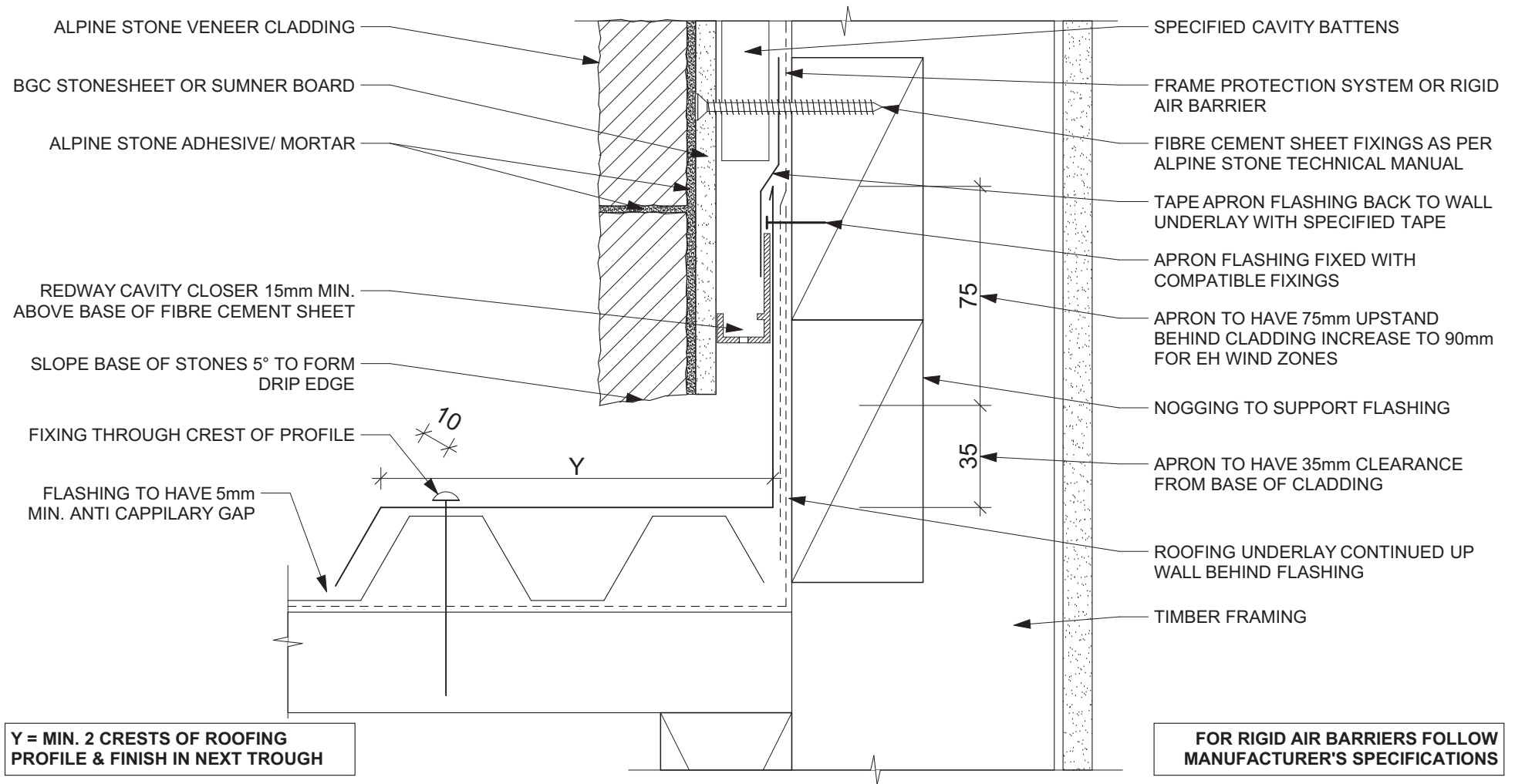
SCALE - 1:2

## ALPINE STONE VENEER CLADDING SYSTEM

VERSION - 16/03/2016

- THESE DRAWINGS MUST BE READ IN CONJUNCTION WITH THE LIST OF SPECIFIED/ACCEPTED PRODUCTS SUPPLIED WITH THE ALPINE STONE TECHNICAL MANUAL.
- SUBSTRATE TO BE PREPPED READY TO APPLY ALPINE STONE VENEER TO. THIS MUST COMPLY WITH ALL RELEVANT STANDARDS AND REQUIREMENTS e.g. COUNCIL, NZBC, ALPINE STONE AND OTHER PRODUCTS DETAILS.
- ANY SCRIBERS, PEF ROD, RENDERS, SEALERS etc (OTHER THAN THE SEALER SCRATCH COAT APPLIED BY ALPINE STONE) REQUIRED AS PART OF THE CONSTRUCTION DETAIL BEFORE AND AFTER INSTALLATION WILL NOT BE DONE BY ALPINE STONE OR ITS INSTALLERS.





DWG - 11

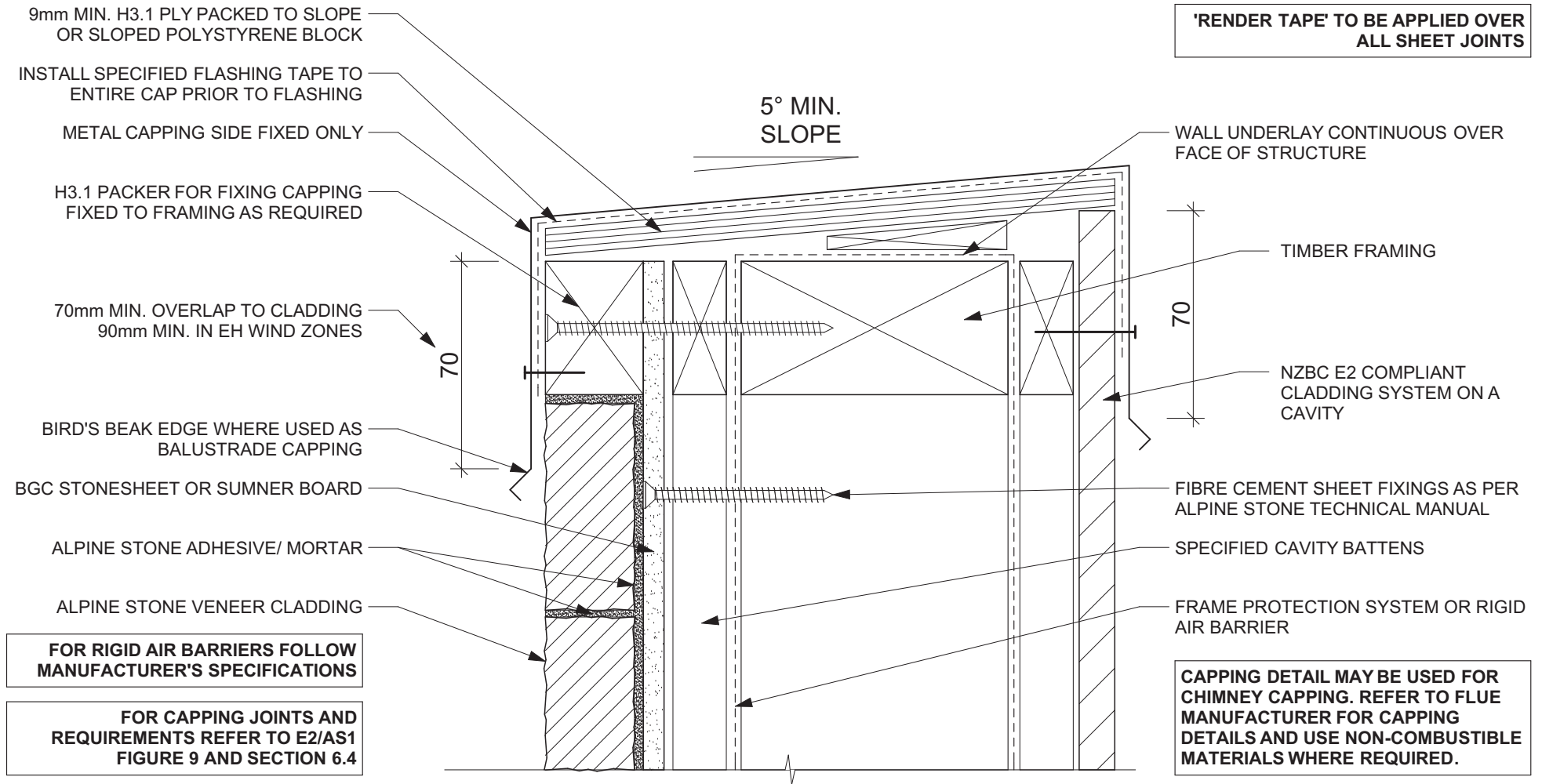
PARALLEL APRON DETAIL

SCALE - 1:2

## ALPINE STONE VENEER CLADDING SYSTEM VERSION - 16/03/2016

- THESE DRAWINGS MUST BE READ IN CONJUNCTION WITH THE LIST OF SPECIFIED/ACCEPTED PRODUCTS SUPPLIED WITH THE ALPINE STONE TECHNICAL MANUAL.
- SUBSTRATE TO BE PREPPED READY TO APPLY ALPINE STONE VENEER TO. THIS MUST COMPLY WITH ALL RELEVANT STANDARDS AND REQUIREMENTS e.g. COUNCIL, NZBC, ALPINE STONE AND OTHER PRODUCTS DETAILS.
- ANY SCRIBERS, PEF ROD, RENDERERS, SEALERS etc (OTHER THAN THE SEALER SCRATCH COAT APPLIED BY ALPINE STONE) REQUIRED AS PART OF THE CONSTRUCTION DETAIL BEFORE AND AFTER INSTALLATION WILL NOT BE DONE BY ALPINE STONE OR IT'S INSTALLERS.





DWG - 12

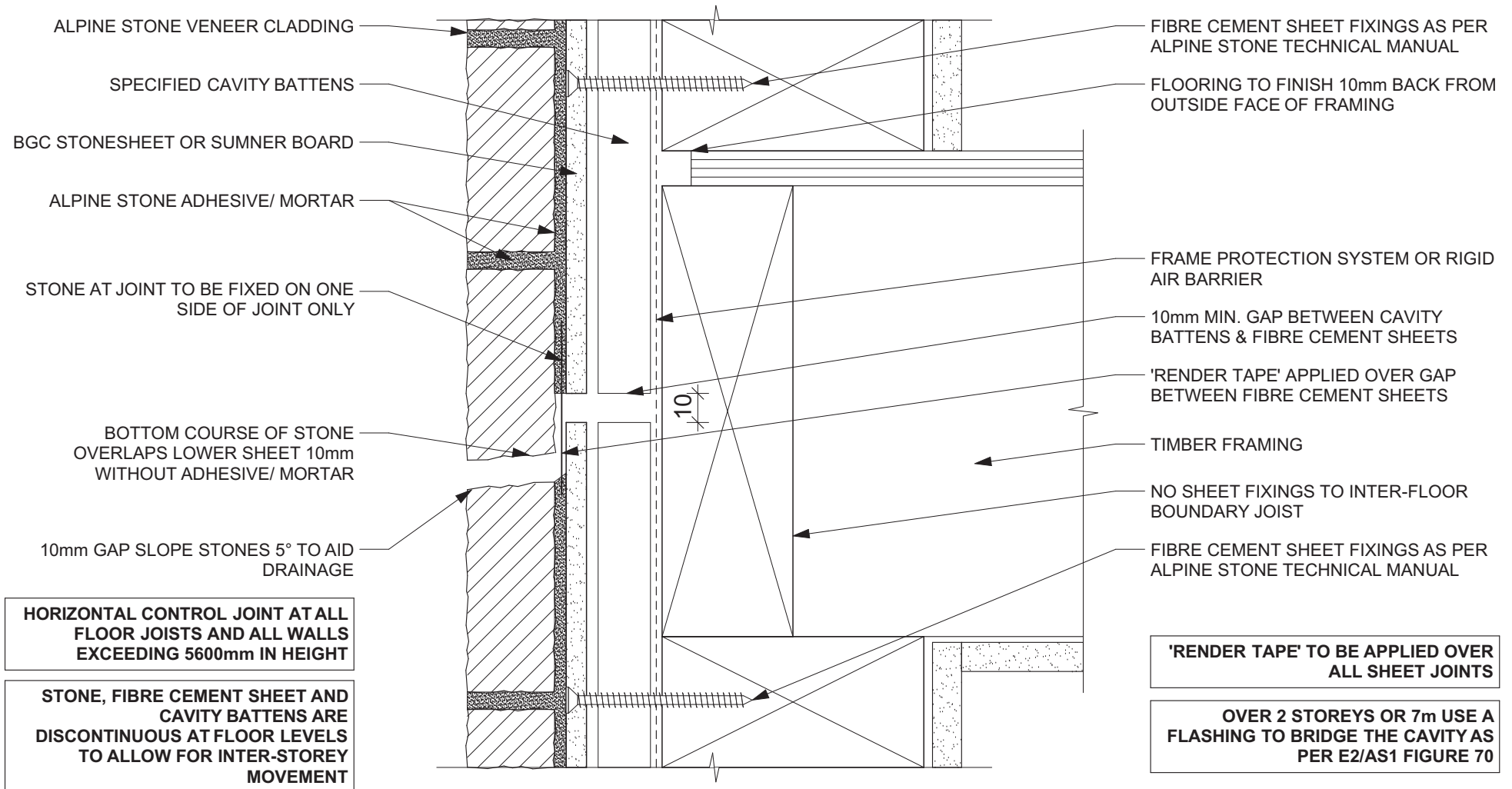
PARAPET/ BALUSTRADE DETAIL

SCALE - 1:2

## ALPINE STONE VENEER CLADDING SYSTEM VERSION - 16/03/2016

- THESE DRAWINGS MUST BE READ IN CONJUNCTION WITH THE LIST OF SPECIFIED/ACCEPTED PRODUCTS SUPPLIED WITH THE ALPINE STONE TECHNICAL MANUAL.
- SUBSTRATE TO BE PREPPED READY TO APPLY ALPINE STONE VENEER TO. THIS MUST COMPLY WITH ALL RELEVANT STANDARDS AND REQUIREMENTS e.g. COUNCIL, NZBC, ALPINE STONE AND OTHER PRODUCTS DETAILS.
- ANY SCRIBERS, PEF ROD, RENDERS, SEALERS etc (OTHER THAN THE SEALER SCRATCH COAT APPLIED BY ALPINE STONE) REQUIRED AS PART OF THE CONSTRUCTION DETAIL BEFORE AND AFTER INSTALLATION WILL NOT BE DONE BY ALPINE STONE OR ITS INSTALLERS.





DWG - 13

HORIZONTAL CONTROL JOINT

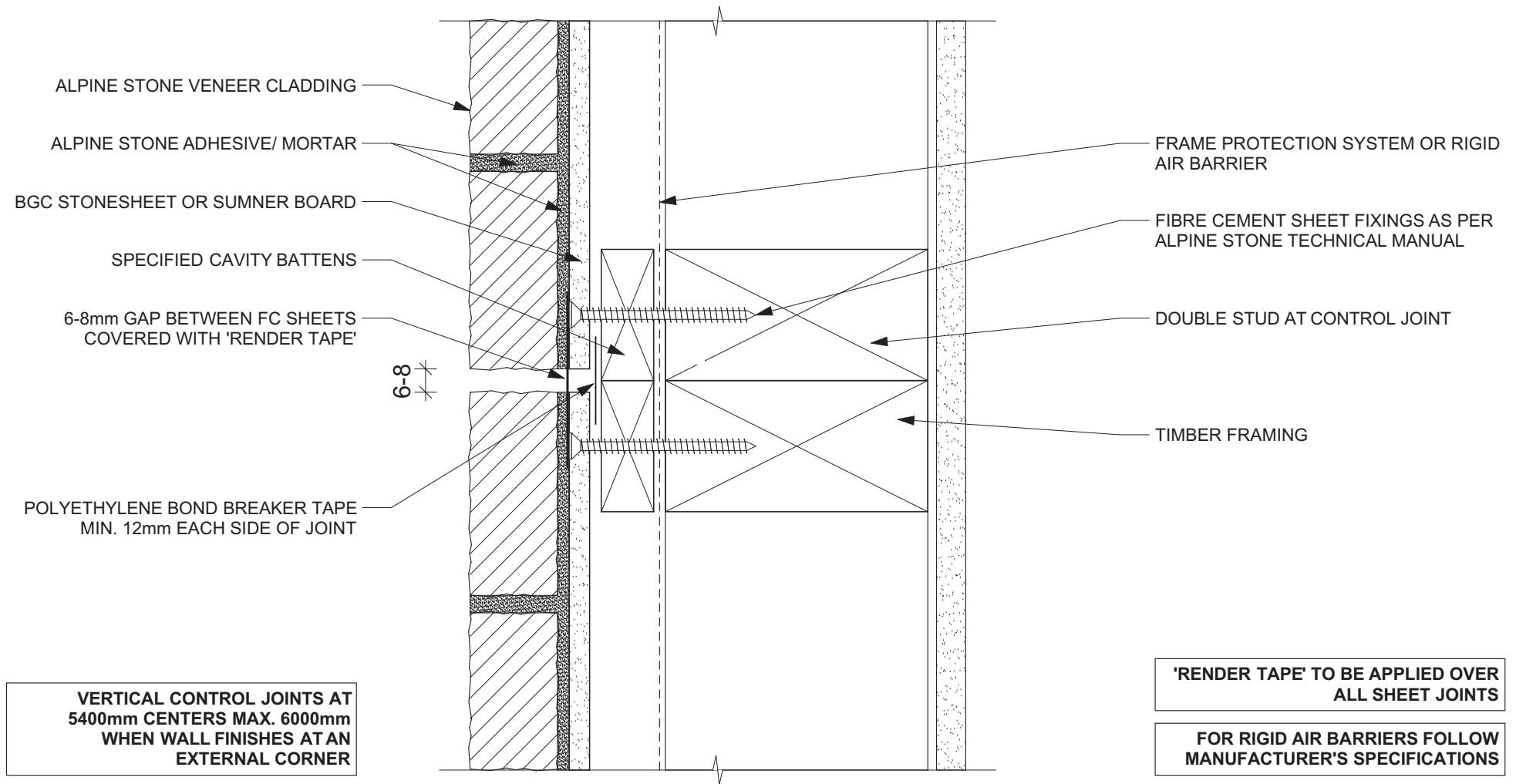
SCALE - 1:2

# ALPINE STONE VENEER CLADDING SYSTEM

VERSION - 16/03/2016

- THESE DRAWINGS MUST BE READ IN CONJUNCTION WITH THE LIST OF SPECIFIED/ACCEPTED PRODUCTS SUPPLIED WITH THE ALPINE STONE TECHNICAL MANUAL.
- SUBSTRATE TO BE PREPPED READY TO APPLY ALPINE STONE VENEER TO. THIS MUST COMPLY WITH ALL RELEVANT STANDARDS AND REQUIREMENTS e.g. COUNCIL, NZBC, ALPINE STONE AND OTHER PRODUCTS DETAILS.
- ANY SCRIBERS, PEF ROD, RENDERERS, SEALERS etc (OTHER THAN THE SEALER SCRATCH COAT APPLIED BY ALPINE STONE) REQUIRED AS PART OF THE CONSTRUCTION DETAIL BEFORE AND AFTER INSTALLATION WILL NOT BE DONE BY ALPINE STONE OR ITS INSTALLERS.





DWG - 14

PLAN VIEW OF VERTICAL CONTROL JOINT DETAIL

SCALE - 1:2

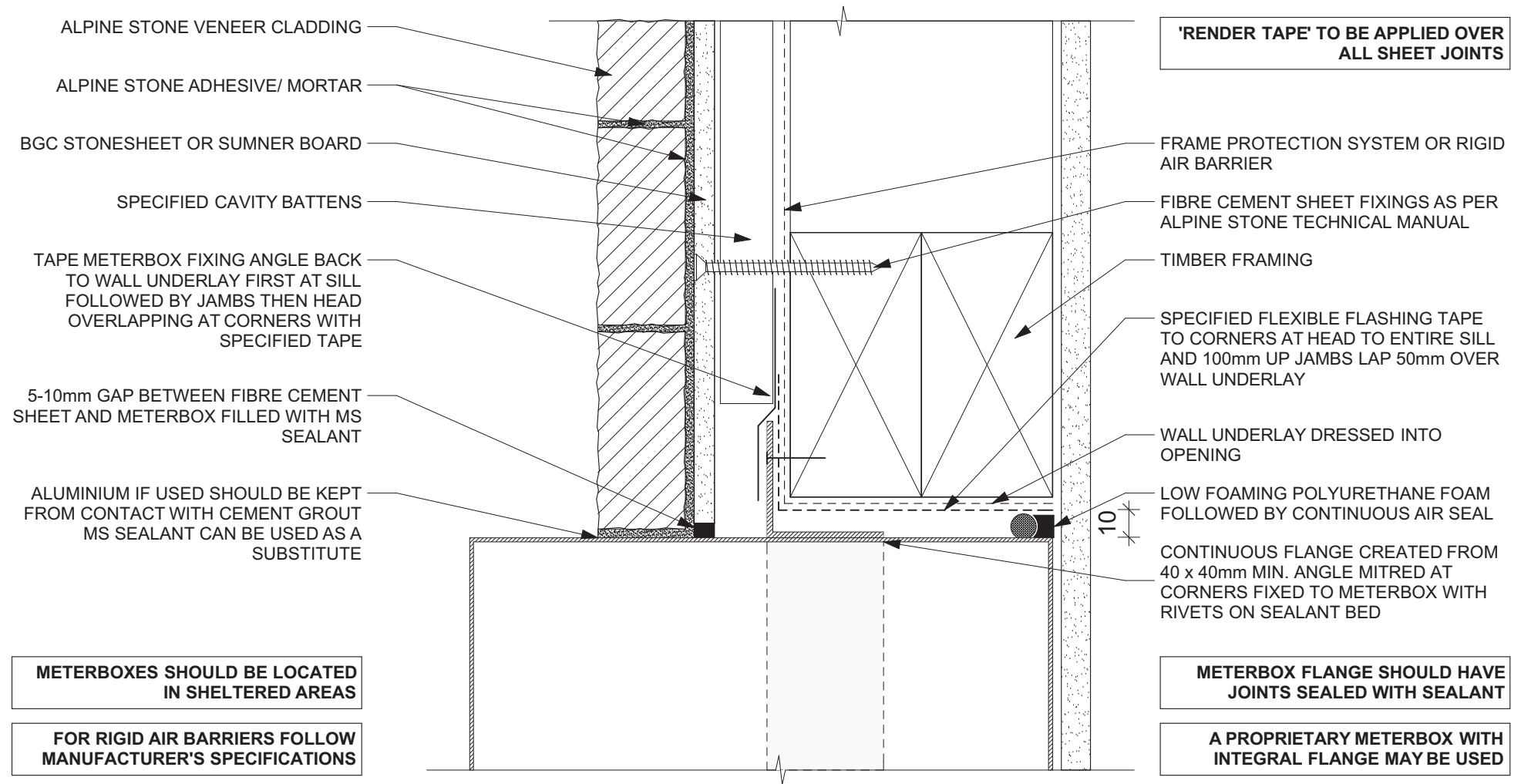
## ALPINE STONE VENEER CLADDING SYSTEM VERSION - 16/03/2016

- THESE DRAWINGS MUST BE READ IN CONJUNCTION WITH THE LIST OF SPECIFIED/ACCEPTED PRODUCTS SUPPLIED WITH THE ALPINE STONE TECHNICAL MANUAL.

- SUBSTRATE TO BE PREPPED READY TO APPLY ALPINE STONE VENEER TO. THIS MUST COMPLY WITH ALL RELEVANT STANDARDS AND REQUIREMENTS e.g. COUNCIL, NZBC, ALPINE STONE AND OTHER PRODUCTS DETAILS.

- ANY SCRIBERS, PEF ROD, RENDERERS, SEALERS etc (OTHER THAN THE SEALER SCRATCH COAT APPLIED BY ALPINE STONE) REQUIRED AS PART OF THE CONSTRUCTION DETAIL BEFORE AND AFTER INSTALLATION WILL NOT BE DONE BY ALPINE STONE OR IT'S INSTALLERS.





DWG - 15

METERBOX DETAIL

SCALE - 1:2

## ALPINE STONE VENEER CLADDING SYSTEM VERSION - 16/03/2016

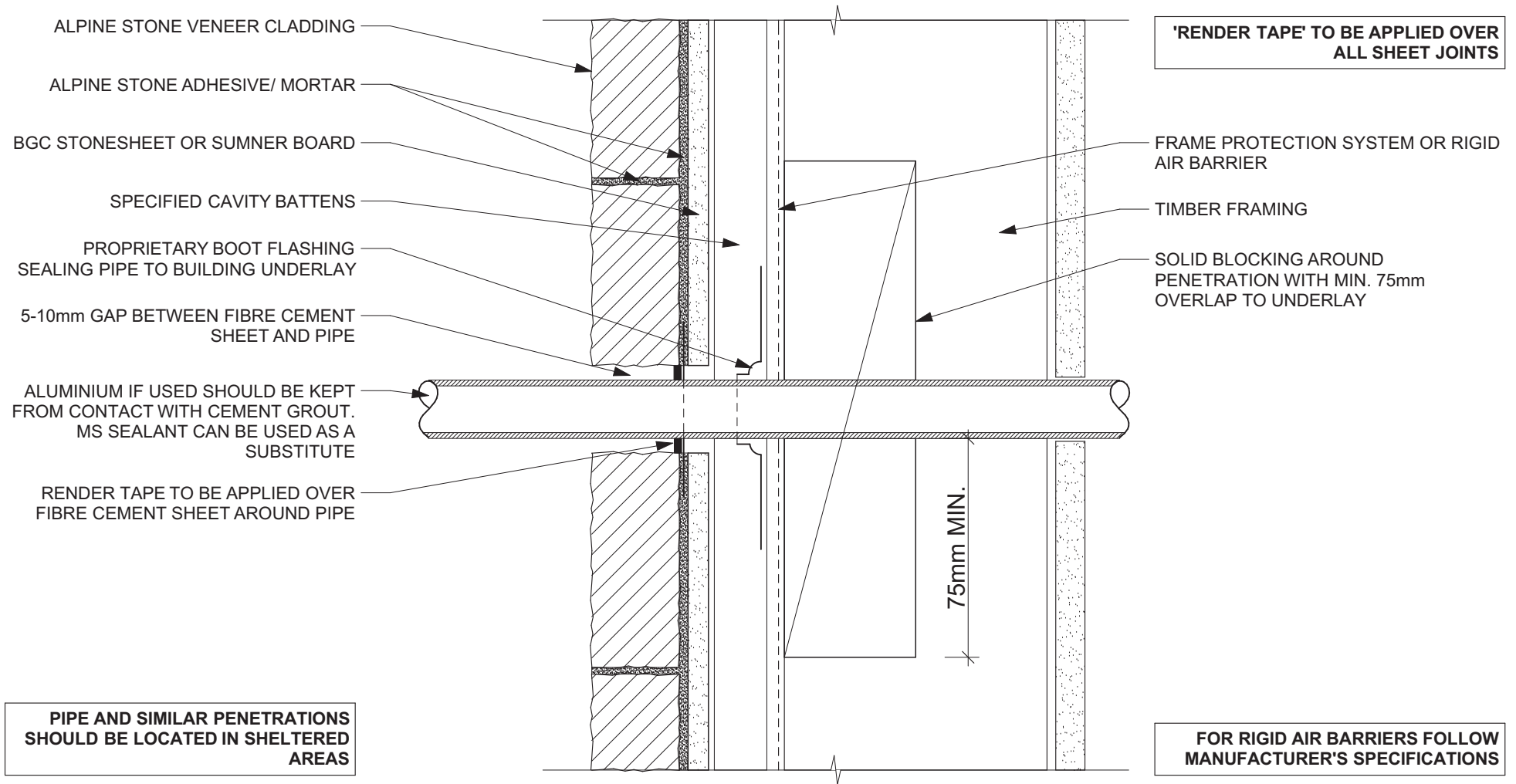
- THESE DRAWINGS MUST BE READ IN CONJUNCTION WITH THE LIST OF SPECIFIED/ACCEPTED PRODUCTS SUPPLIED WITH THE ALPINE STONE TECHNICAL MANUAL.

- SUBSTRATE TO BE PREPPED READY TO APPLY ALPINE STONE VENEER TO. THIS MUST COMPLY WITH ALL RELEVANT STANDARDS AND REQUIREMENTS e.g. COUNCIL, NZBC, ALPINE STONE AND OTHER PRODUCTS DETAILS.

- ANY SCRIBERS, PEF ROD, RENDERS, SEALERS etc (OTHER THAN THE SEALER SCRATCH COAT APPLIED BY ALPINE STONE) REQUIRED AS PART OF THE CONSTRUCTION DETAIL BEFORE AND AFTER INSTALLATION WILL NOT BE DONE BY ALPINE STONE OR ITS INSTALLERS.







DWG - 16

PENETRATION DETAIL

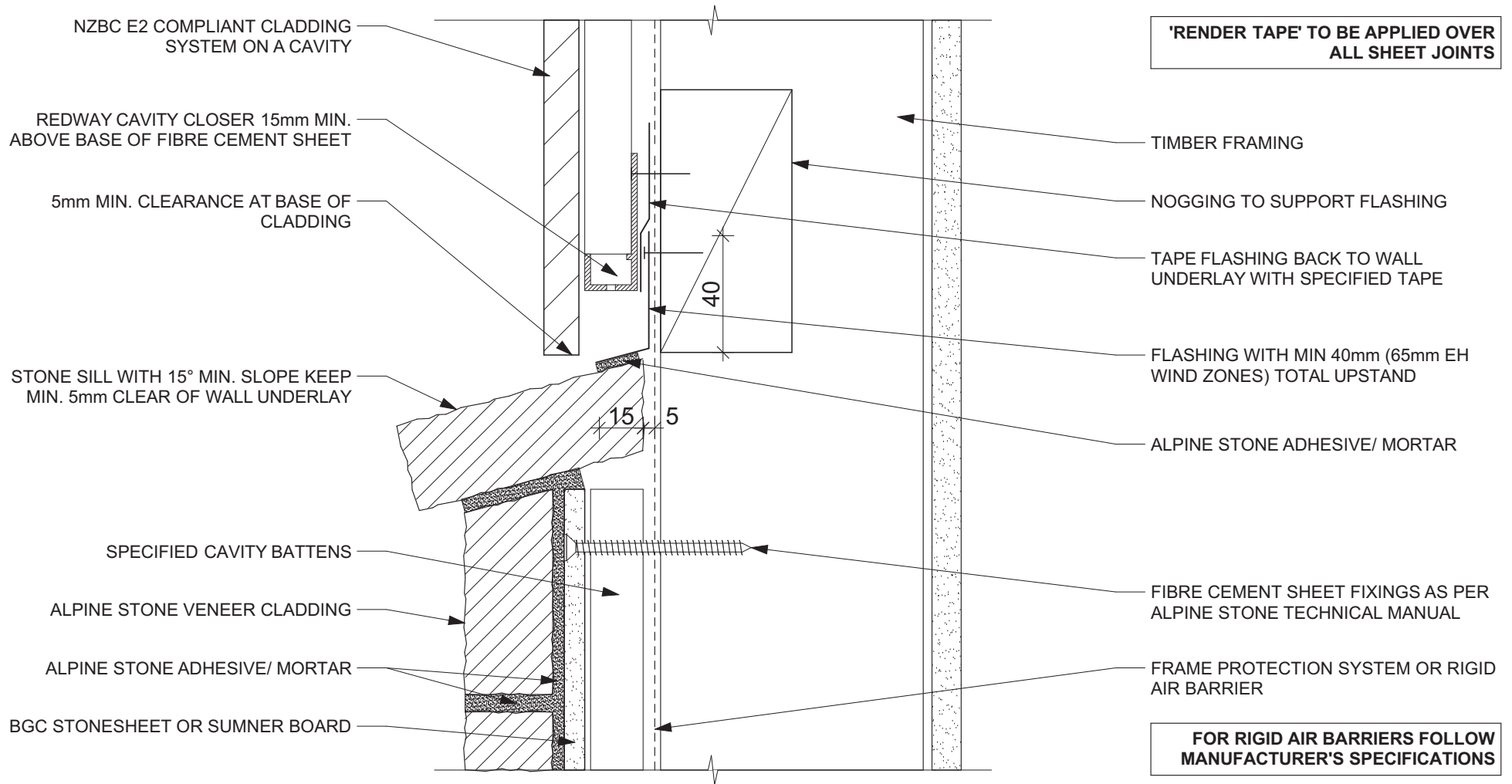
SCALE - 1:2

## ALPINE STONE VENEER CLADDING SYSTEM

VERSION - 16/03/2016

- THESE DRAWINGS MUST BE READ IN CONJUNCTION WITH THE LIST OF SPECIFIED/ACCEPTED PRODUCTS SUPPLIED WITH THE ALPINE STONE TECHNICAL MANUAL.
- SUBSTRATE TO BE PREPPED READY TO APPLY ALPINE STONE VENEER TO. THIS MUST COMPLY WITH ALL RELEVANT STANDARDS AND REQUIREMENTS e.g. COUNCIL, NZBC, ALPINE STONE AND OTHER PRODUCTS DETAILS.
- ANY SCRIBERS, PEF ROD, RENDERS, SEALERS etc (OTHER THAN THE SEALER SCRATCH COAT APPLIED BY ALPINE STONE) REQUIRED AS PART OF THE CONSTRUCTION DETAIL BEFORE AND AFTER INSTALLATION WILL NOT BE DONE BY ALPINE STONE OR IT'S INSTALLERS.





DWG - 17

HORIZONTAL JOINT WITH ALTERNATIVE CLADDING

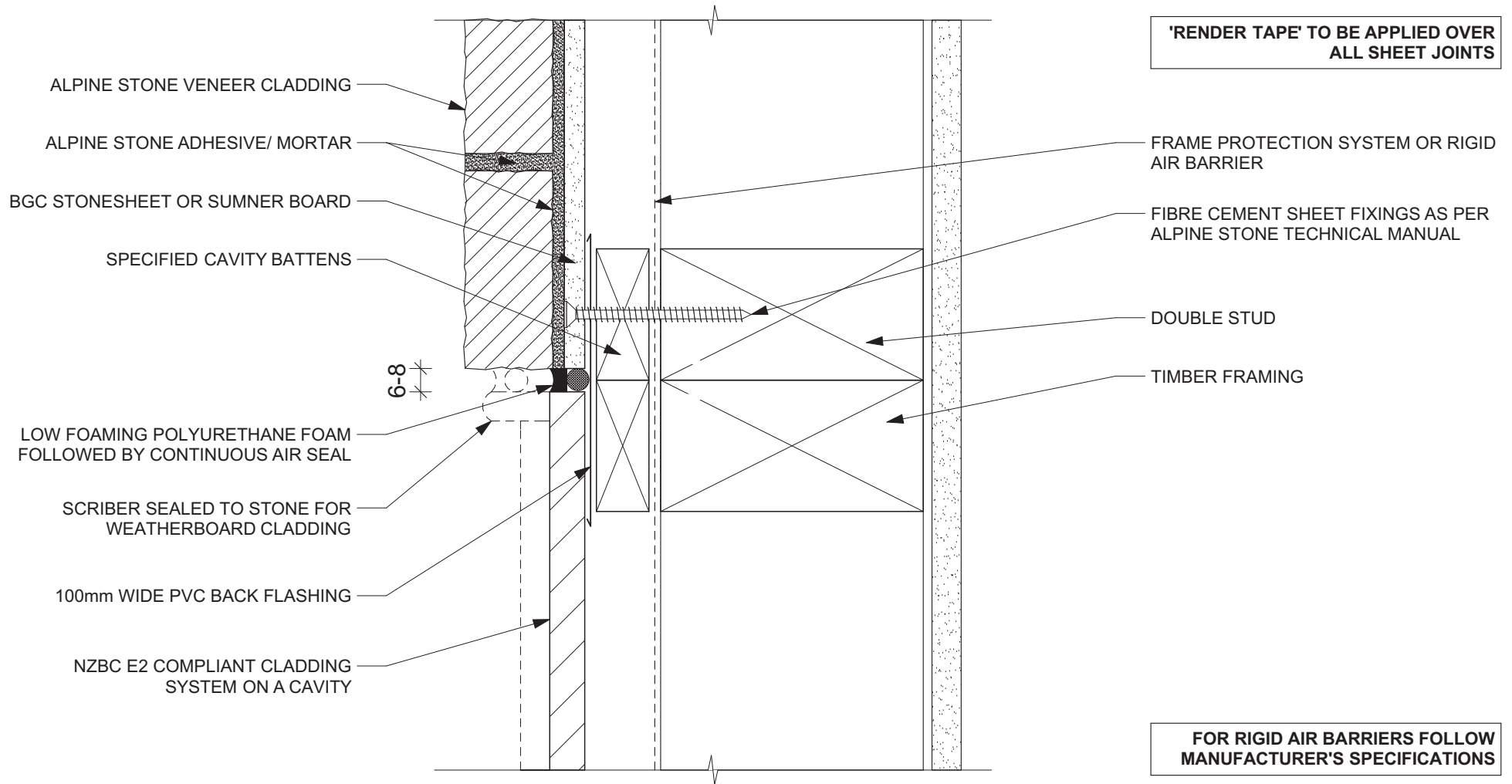
SCALE - 1:2

## ALPINE STONE VENEER CLADDING SYSTEM

VERSION - 16/03/2016

- THESE DRAWINGS MUST BE READ IN CONJUNCTION WITH THE LIST OF SPECIFIED/ACCEPTED PRODUCTS SUPPLIED WITH THE ALPINE STONE TECHNICAL MANUAL.
- SUBSTRATE TO BE PREPPED READY TO APPLY ALPINE STONE VENEER TO. THIS MUST COMPLY WITH ALL RELEVANT STANDARDS AND REQUIREMENTS e.g. COUNCIL, NZBC, ALPINE STONE AND OTHER PRODUCTS DETAILS.
- ANY SCRIBERS, PEF ROD, RENDERS, SEALERS etc (OTHER THAN THE SEALER SCRATCH COAT APPLIED BY ALPINE STONE) REQUIRED AS PART OF THE CONSTRUCTION DETAIL BEFORE AND AFTER INSTALLATION WILL NOT BE DONE BY ALPINE STONE OR ITS INSTALLERS.





DWG - 18

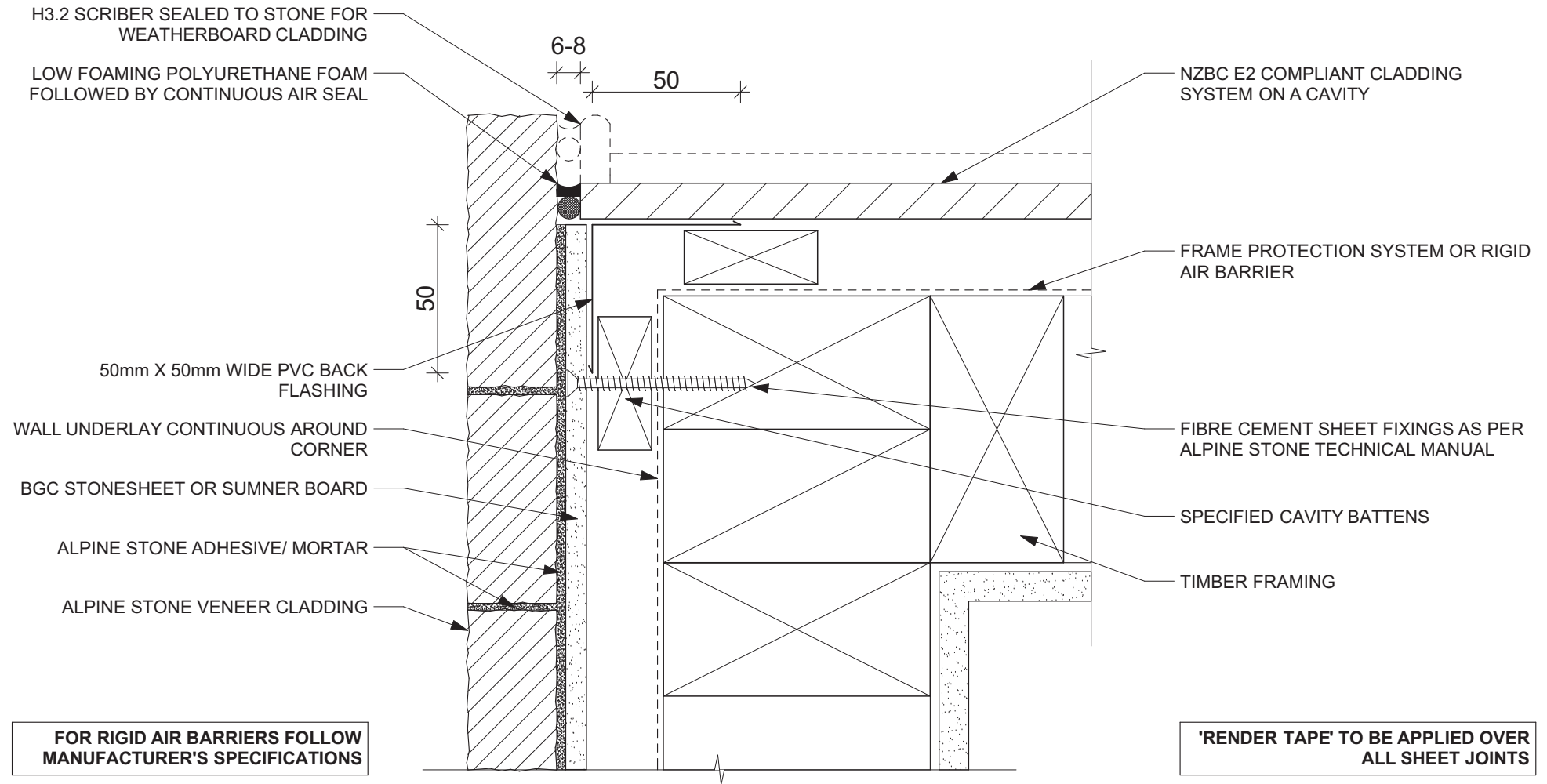
PLAN VIEW OF VERTICAL JOINT WITH ALTERNATIVE CLADDING

SCALE - 1:2

## ALPINE STONE VENEER CLADDING SYSTEM VERSION - 16/03/2016

- THESE DRAWINGS MUST BE READ IN CONJUNCTION WITH THE LIST OF SPECIFIED/ACCEPTED PRODUCTS SUPPLIED WITH THE ALPINE STONE TECHNICAL MANUAL.
- SUBSTRATE TO BE PREPPED READY TO APPLY ALPINE STONE VENEER TO. THIS MUST COMPLY WITH ALL RELEVANT STANDARDS AND REQUIREMENTS e.g. COUNCIL, NZBC, ALPINE STONE AND OTHER PRODUCTS DETAILS.
- ANY SCRIBERS, PEF ROD, RENDERERS, SEALERS etc (OTHER THAN THE SEALER SCRATCH COAT APPLIED BY ALPINE STONE) REQUIRED AS PART OF THE CONSTRUCTION DETAIL BEFORE AND AFTER INSTALLATION WILL NOT BE DONE BY ALPINE STONE OR IT'S INSTALLERS.





DWG - 19 PLAN VIEW OF EXTERNAL CORNER JOINT WITH ALTERNATIVE CLADDING SCALE - 1:2

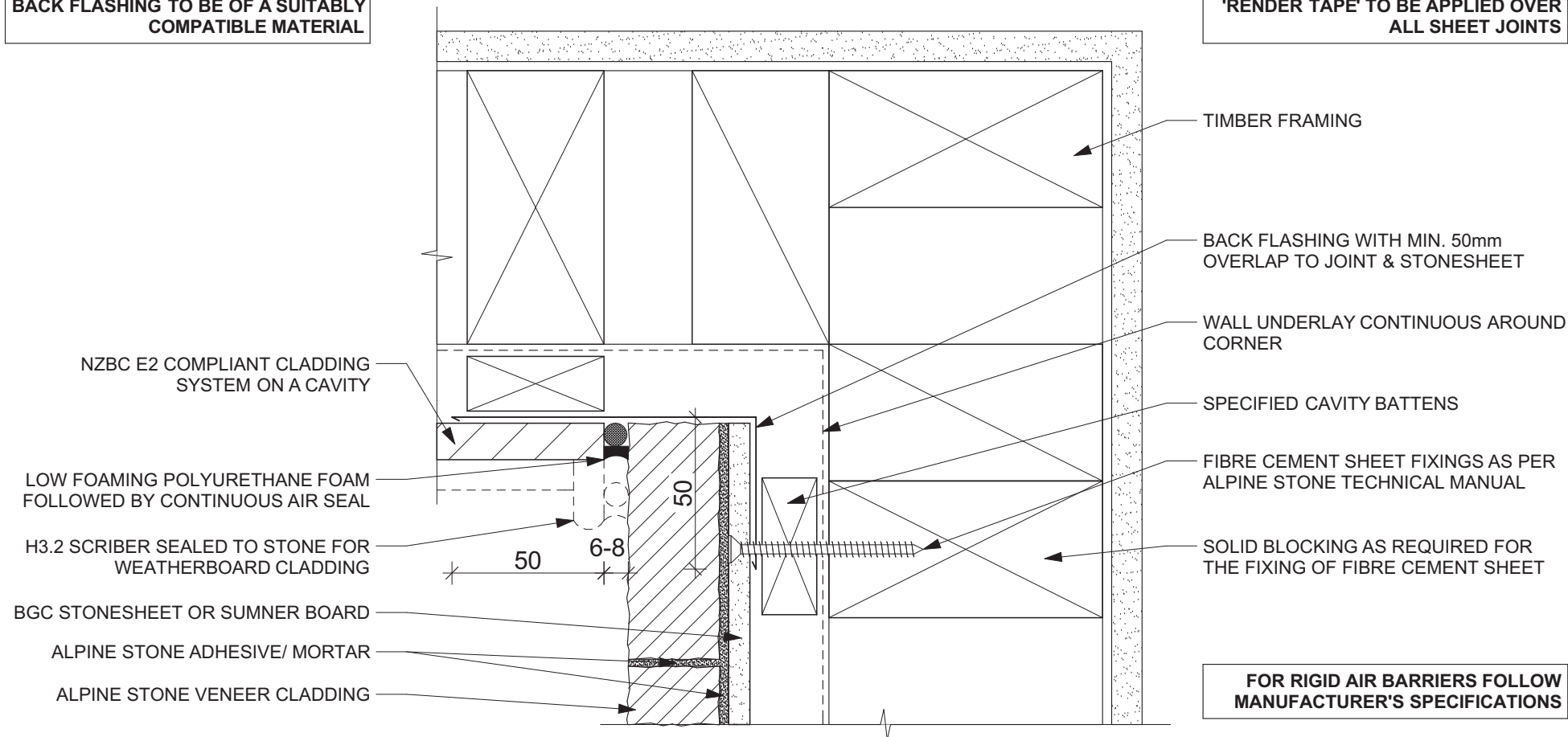
## ALPINE STONE VENEER CLADDING SYSTEM VERSION - 16/03/2016

- THESE DRAWINGS MUST BE READ IN CONJUNCTION WITH THE LIST OF SPECIFIED/ACCEPTED PRODUCTS SUPPLIED WITH THE ALPINE STONE TECHNICAL MANUAL.
- SUBSTRATE TO BE PREPPED READY TO APPLY ALPINE STONE VENEER TO. THIS MUST COMPLY WITH ALL RELEVANT STANDARDS AND REQUIREMENTS e.g. COUNCIL, NZBC, ALPINE STONE AND OTHER PRODUCTS DETAILS.
- ANY SCRIBERS, PEF ROD, RENDERS, SEALERS etc (OTHER THAN THE SEALER SCRATCH COAT APPLIED BY ALPINE STONE) REQUIRED AS PART OF THE CONSTRUCTION DETAIL BEFORE AND AFTER INSTALLATION WILL NOT BE DONE BY ALPINE STONE OR IT'S INSTALLERS.



BACK FLASHING TO BE OF A SUITABLY  
COMPATIBLE MATERIAL

'RENDER TAPE' TO BE APPLIED OVER  
ALL SHEET JOINTS



DWG - 20      PLAN VIEW OF INTERNAL CORNER JOINT WITH ALTERNATE CLADDING      SCALE - 1:2

## ALPINE STONE VENEER CLADDING SYSTEM VERSION - 16/03/2016

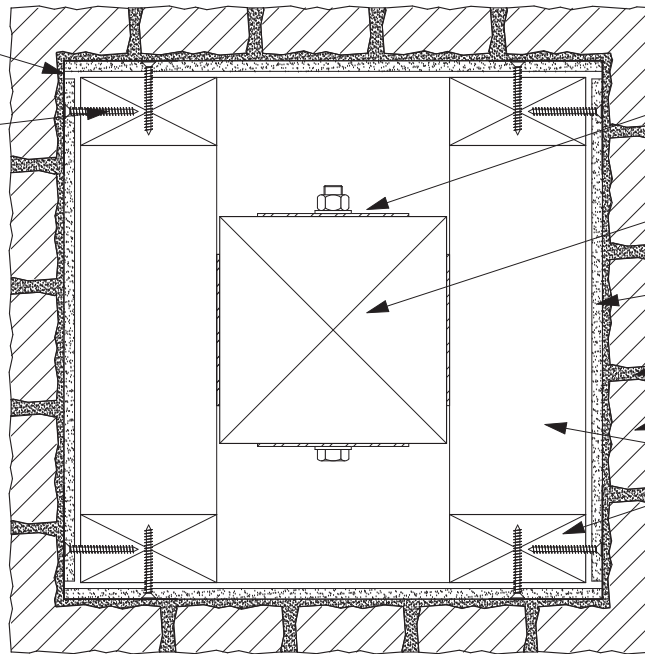
- THESE DRAWINGS MUST BE READ IN CONJUNCTION WITH THE LIST OF SPECIFIED/ACCEPTED PRODUCTS SUPPLIED WITH THE ALPINE STONE TECHNICAL MANUAL.  
- SUBSTRATE TO BE PREPPED READY TO APPLY ALPINE STONE VENEER TO. THIS MUST COMPLY WITH ALL RELEVANT STANDARDS AND REQUIREMENTS e.g. COUNCIL, NZBC, ALPINE STONE AND OTHER PRODUCTS DETAILS.  
- ANY SCRIBERS, PEF ROD, RENDERS, SEALERS etc (OTHER THAN THE SEALER SCRATCH COAT APPLIED BY ALPINE STONE) REQUIRED AS PART OF THE CONSTRUCTION DETAIL BEFORE AND AFTER INSTALLATION WILL NOT BE DONE BY ALPINE STONE OR IT'S INSTALLERS.



5mm GAP BETWEEN SHEETS, JOINT  
SEALED WITH RENDER TAPE

FIBRE CEMENT SHEET FIXINGS AS  
PER ALPINE STONE TECHNICAL  
MANUAL

\*\*POST MAY BE EMBEDDED IN  
CONCRETE AS AN ALTERNATIVE TO  
BRACKET



POST BRACKET AND FIXING TO  
SPECIFIC DESIGN

\*\*H5 TREATED TIMBER POST OR STEEL  
POST TO SPECIFIC DESIGN

BGC STONESHEET OR SUMNER BOARD

ALPINE STONE ADHESIVE/ MORTAR

ALPINE STONE VENEER  
CLADDING

H3.2 TIMBER FRAMING

DWG - 21

PLAN VIEW OF COLUMN DETAIL

1:5

## ALPINE STONE VENEER CLADDING SYSTEM VERSION - 16/03/2016

- THESE DRAWINGS MUST BE READ IN CONJUNCTION WITH THE LIST OF SPECIFIED/ACCEPTED PRODUCTS SUPPLIED WITH THE ALPINE STONE TECHNICAL MANUAL.
- SUBSTRATE TO BE PREPPED READY TO APPLY ALPINE STONE VENEER TO. THIS MUST COMPLY WITH ALL RELEVANT STANDARDS AND REQUIREMENTS e.g. COUNCIL, NZBC, ALPINE STONE AND OTHER PRODUCTS DETAILS.
- ANY SCRIBERS, PEF ROD, RENDERS, SEALERS etc (OTHER THAN THE SEALER SCRATCH COAT APPLIED BY ALPINE STONE) REQUIRED AS PART OF THE CONSTRUCTION DETAIL BEFORE AND AFTER INSTALLATION WILL NOT BE DONE BY ALPINE STONE OR IT'S INSTALLERS.



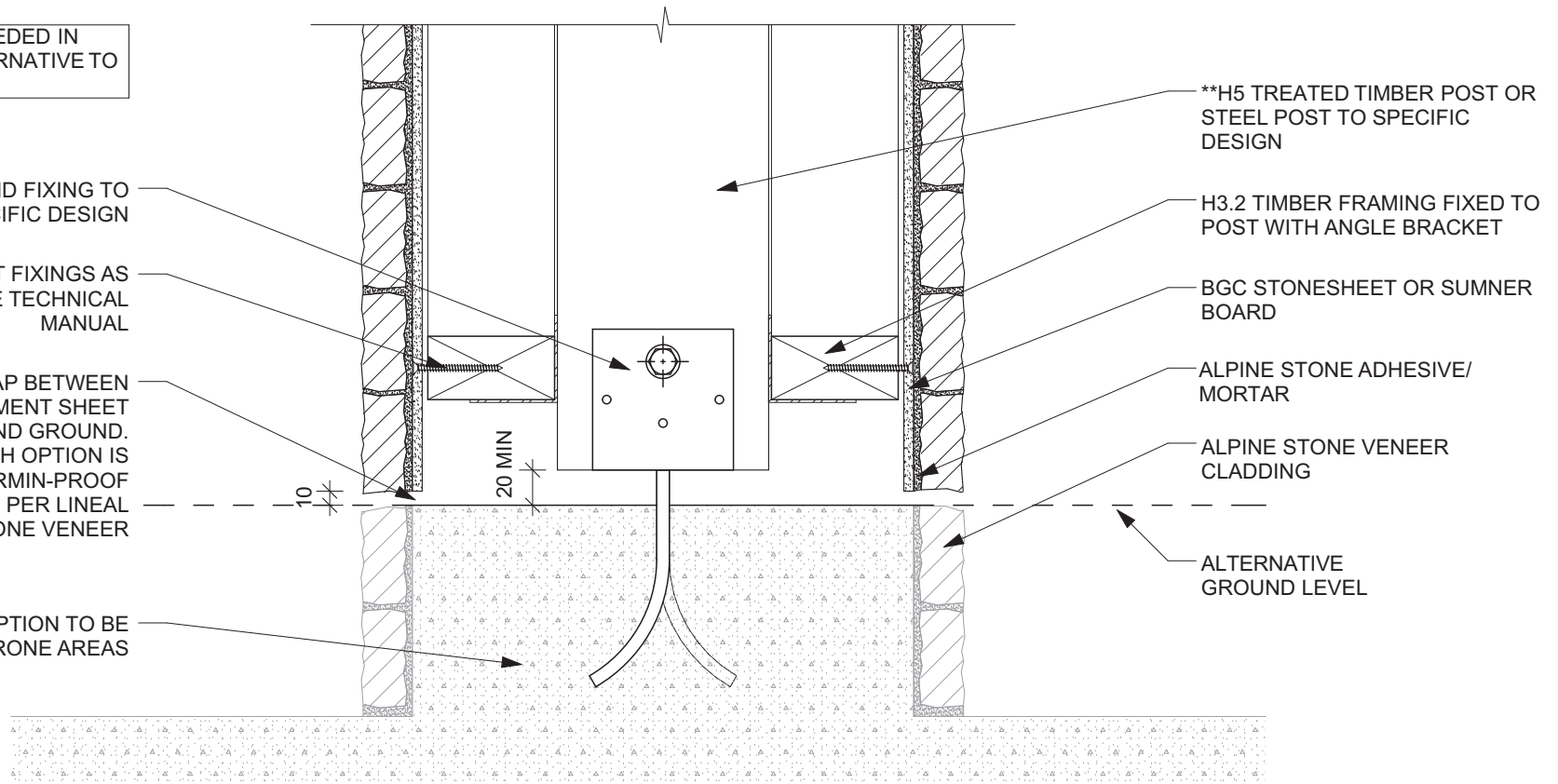
\*\*POST MAY BE EMBEDDED IN CONCRETE AS AN ALTERNATIVE TO BRACKET

POST BRACKET AND FIXING TO SPECIFIC DESIGN

FIBRE CEMENT SHEET FIXINGS AS PER ALPINE STONE TECHNICAL MANUAL

PROVIDE 10mm MIN GAP BETWEEN BOTTOM OF FIBRE CEMENT SHEET AND GROUND. WHEN CONCRETE PLINTH OPTION IS USED, PROVIDE VERMIN-PROOF VENT, MIN 1000mm<sup>2</sup> PER LINEAL METRE OF STONE VENEER

CONCRETE PLINTH OPTION TO BE USED IN FLOOD PRONE AREAS



DWG - 22

COLUMN BASE DETAIL

1:5

## ALPINE STONE VENEER CLADDING SYSTEM

VERSION - 16/03/2016

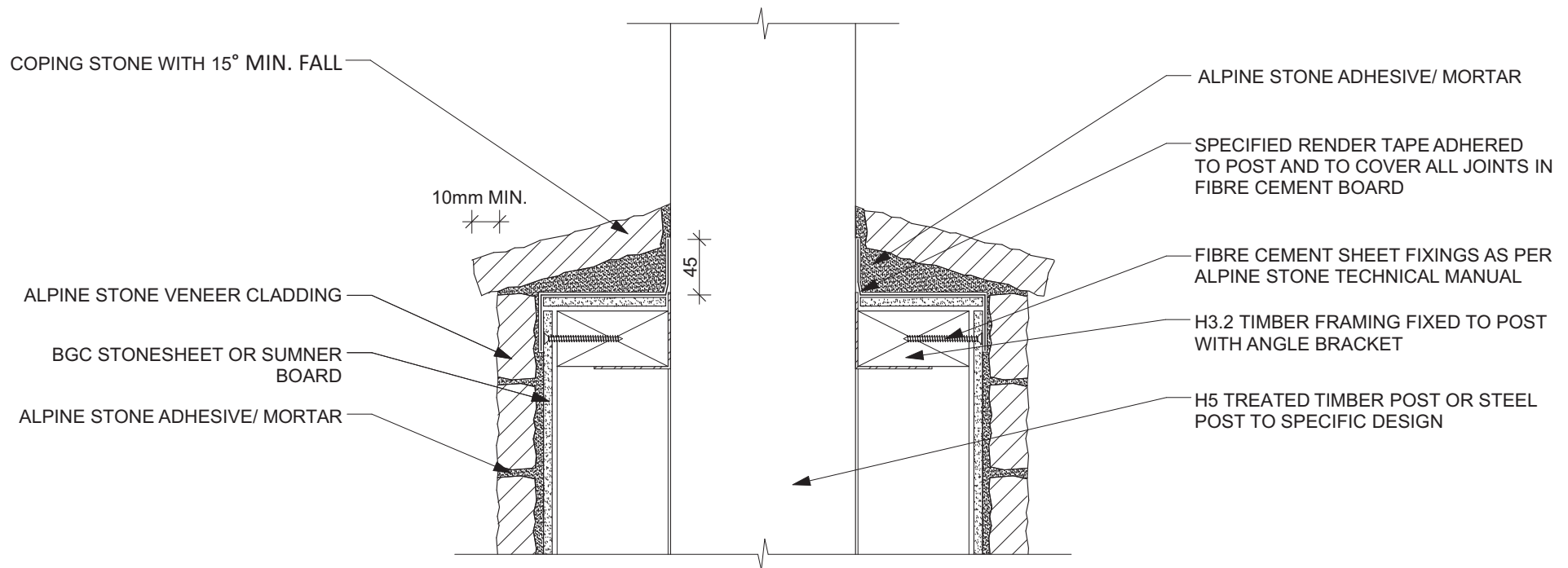
- THESE DRAWINGS MUST BE READ IN CONJUNCTION WITH THE LIST OF SPECIFIED/ACCEPTED PRODUCTS SUPPLIED WITH THE ALPINE STONE TECHNICAL MANUAL.

- SUBSTRATE TO BE PREPPED READY TO APPLY ALPINE STONE VENEER TO. THIS MUST COMPLY WITH ALL RELEVANT STANDARDS AND REQUIREMENTS e.g. COUNCIL, NZBC, ALPINE STONE AND OTHER PRODUCTS DETAILS.

- ANY SCRIBERS, PEF ROD, RENDERS, SEALERS etc (OTHER THAN THE SEALER SCRATCH COAT APPLIED BY ALPINE STONE) REQUIRED AS PART OF THE CONSTRUCTION DETAIL BEFORE AND AFTER INSTALLATION WILL NOT BE DONE BY ALPINE STONE OR IT'S INSTALLERS.







DWG - 23

HALF COLUMN DETAIL

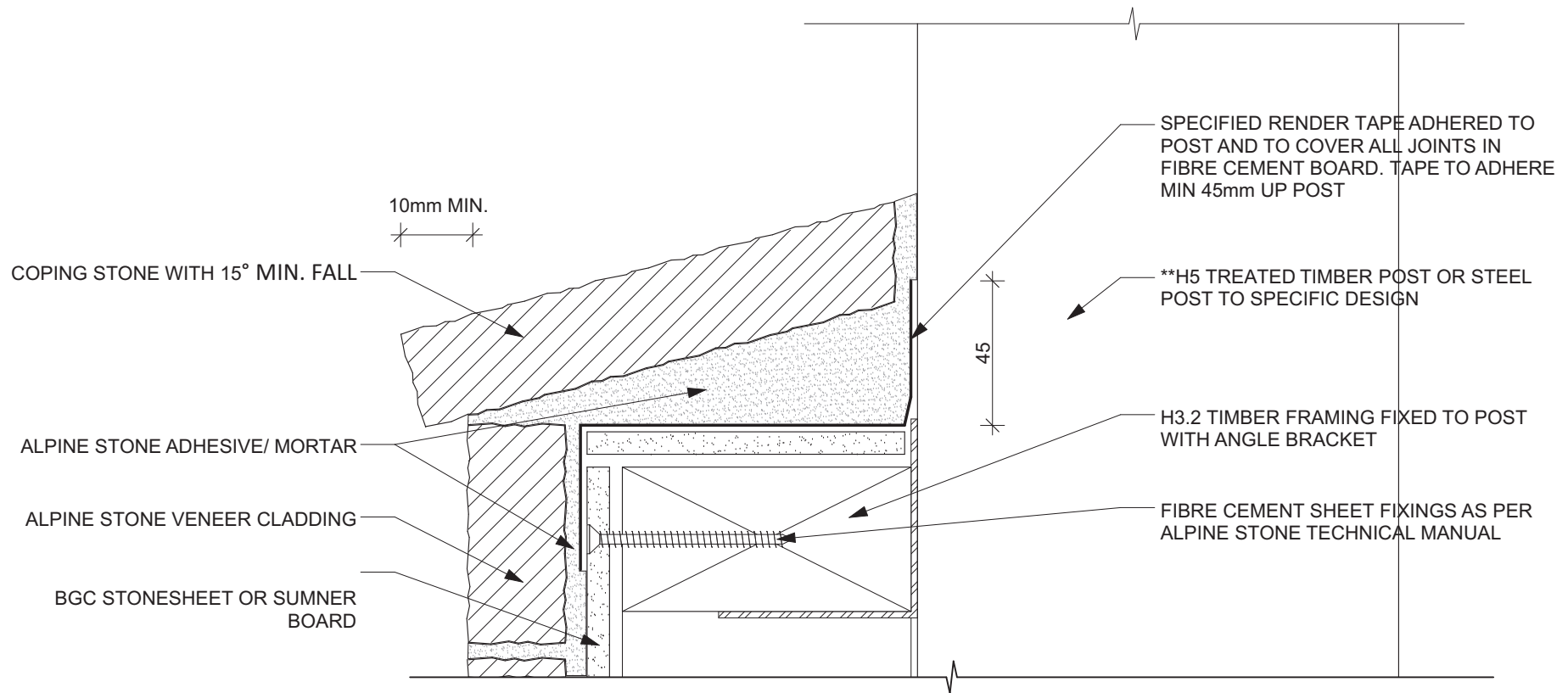
1:5

## ALPINE STONE VENEER CLADDING SYSTEM

VERSION - 16/03/2016

- THESE DRAWINGS MUST BE READ IN CONJUNCTION WITH THE LIST OF SPECIFIED/ACCEPTED PRODUCTS SUPPLIED WITH THE ALPINE STONE TECHNICAL MANUAL.
- SUBSTRATE TO BE PREPPED READY TO APPLY ALPINE STONE VENEER TO. THIS MUST COMPLY WITH ALL RELEVANT STANDARDS AND REQUIREMENTS e.g. COUNCIL, NZBC, ALPINE STONE AND OTHER PRODUCTS DETAILS.
- ANY SCRIBERS, PEF ROD, RENDERS, SEALERS etc (OTHER THAN THE SEALER SCRATCH COAT APPLIED BY ALPINE STONE) REQUIRED AS PART OF THE CONSTRUCTION DETAIL BEFORE AND AFTER INSTALLATION WILL NOT BE DONE BY ALPINE STONE OR IT'S INSTALLERS.





DWG - 24

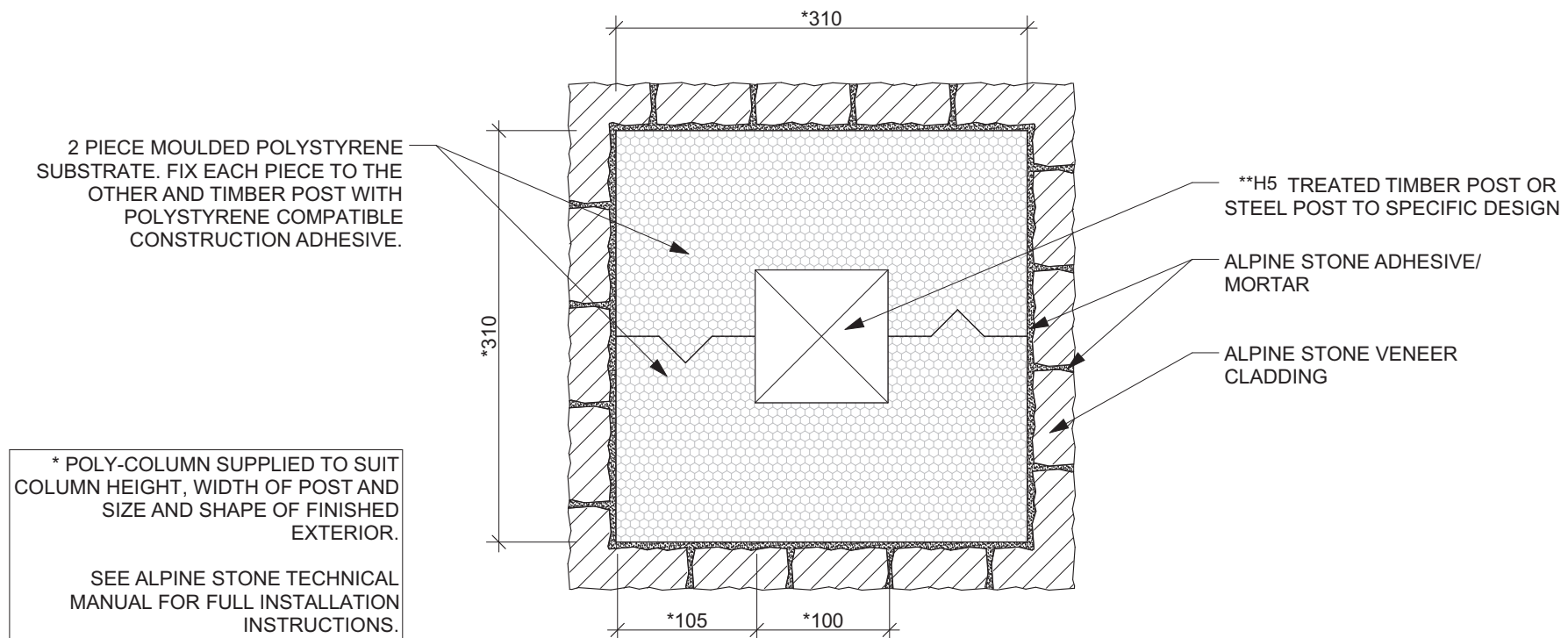
HALF COLUMN CAPPING DETAIL

1:2

## ALPINE STONE VENEER CLADDING SYSTEM VERSION - 16/03/2016

- THESE DRAWINGS MUST BE READ IN CONJUNCTION WITH THE LIST OF SPECIFIED/ACCEPTED PRODUCTS SUPPLIED WITH THE ALPINE STONE TECHNICAL MANUAL.
- SUBSTRATE TO BE PREPPED READY TO APPLY ALPINE STONE VENEER TO. THIS MUST COMPLY WITH ALL RELEVANT STANDARDS AND REQUIREMENTS e.g. COUNCIL, NZBC, ALPINE STONE AND OTHER PRODUCTS DETAILS.
- ANY SCRIBERS, PEF ROD, RENDERS, SEALERS etc (OTHER THAN THE SEALER SCRATCH COAT APPLIED BY ALPINE STONE) REQUIRED AS PART OF THE CONSTRUCTION DETAIL BEFORE AND AFTER INSTALLATION WILL NOT BE DONE BY ALPINE STONE OR IT'S INSTALLERS.





Note: PROVIDE MINIMUM 5MM GAP BETWEEN BOTTOM OF POLY/STONE VENEER COLUMN AND GROUND USE, PERMANENT PACKERS/FIXING TO MAINTAIN GAP

DWG - 25

PLAN VIEW OF POLY-COLUMN DETAIL

1:5

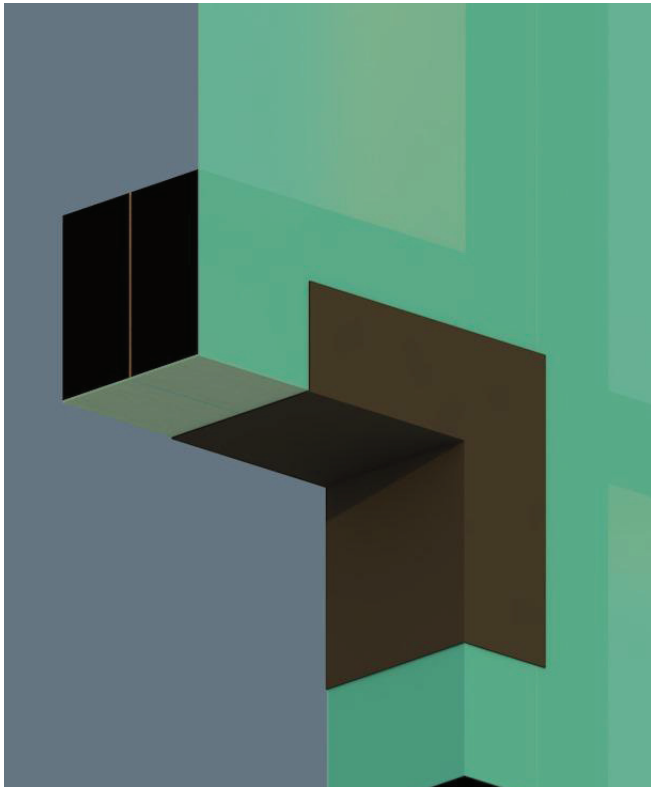
## ALPINE STONE VENEER CLADDING SYSTEM VERSION - 16/03/2016

- THESE DRAWINGS MUST BE READ IN CONJUNCTION WITH THE LIST OF SPECIFIED/ACCEPTED PRODUCTS SUPPLIED WITH THE ALPINE STONE TECHNICAL MANUAL.

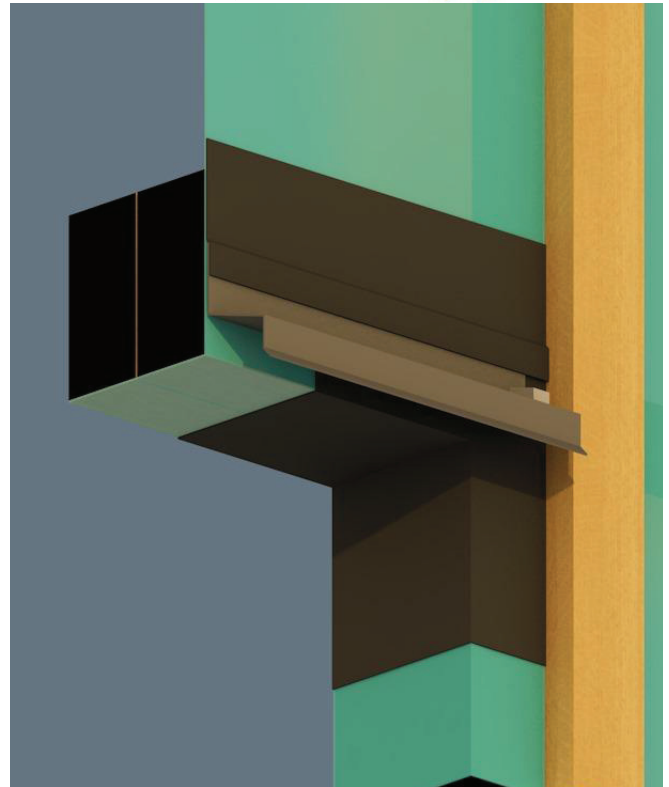
- SUBSTRATE TO BE PREPPED READY TO APPLY ALPINE STONE VENEER TO. THIS MUST COMPLY WITH ALL RELEVANT STANDARDS AND REQUIREMENTS e.g. COUNCIL, NZBC, ALPINE STONE AND OTHER PRODUCTS DETAILS.

- ANY SCRIBERS, PEF ROD, RENDERERS, SEALERS etc (OTHER THAN THE SEALER SCRATCH COAT APPLIED BY ALPINE STONE) REQUIRED AS PART OF THE CONSTRUCTION DETAIL BEFORE AND AFTER INSTALLATION WILL NOT BE DONE BY ALPINE STONE OR IT'S INSTALLERS.

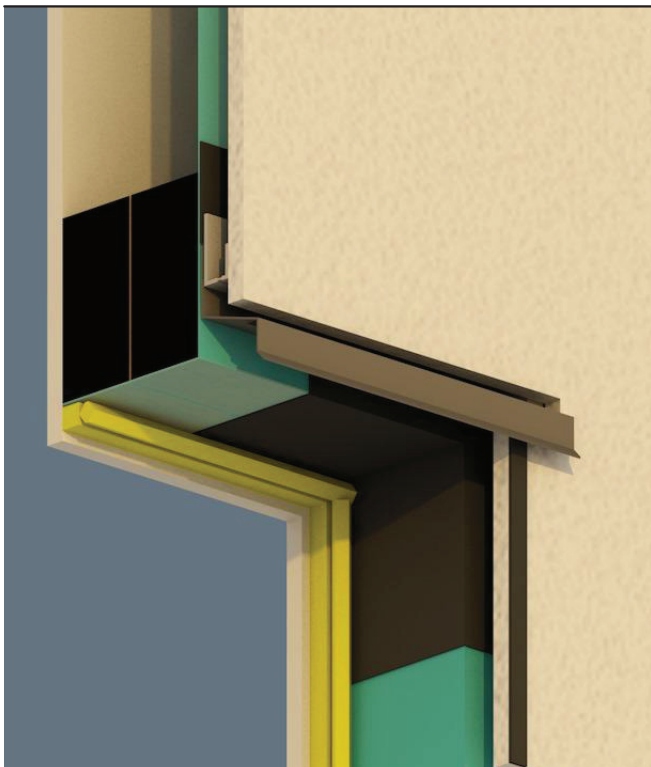




1. TIMBER FRAMING INSTALLED
2. WALL UNDERLAY RUN HORIZONTALLY & DRESSED INTO WINDOW/ DOOR OPENING
3. SPECIFIED FLEXIBLE FLASHING TAPE TO CORNERS AT HEAD AND JAMBS

**HEAD : WRAP & TAPE**

4. HEAD FLASHING FIXED WITH PROPRIETARY STOP ENDS INSTALLED
5. TOP EDGE OF FLASHING TAPED BACK TO WALL UNDERLAY WITH SPECIFIED FLEXIBLE FLASHING TAPE
6. CAVITY BATTENS INSTALLED

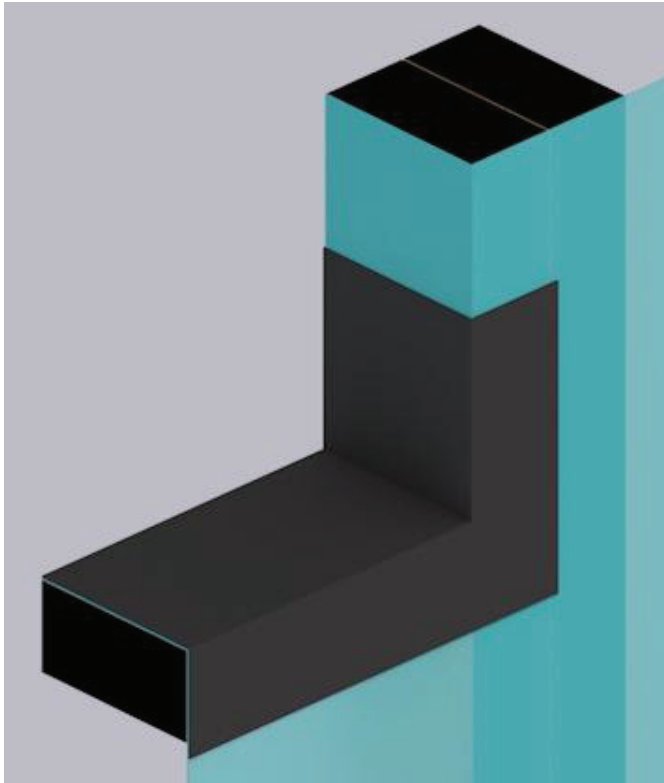
**HEAD : FLASHING**

7. INSTALL CAVITY CLOSER THEN INSTALL FIBRE CEMENT SHEET AROUND HEAD FLASHING
8. INSTALL SPECIFIED FOAM TAPE ONTO FIBRE CEMENT SHEET AT JAMBS
9. AIR SEAL SHOWN IS INSTALLED AFTER FIXING OF WINDOW

**HEAD : FIBRE CEMENT SHEET**

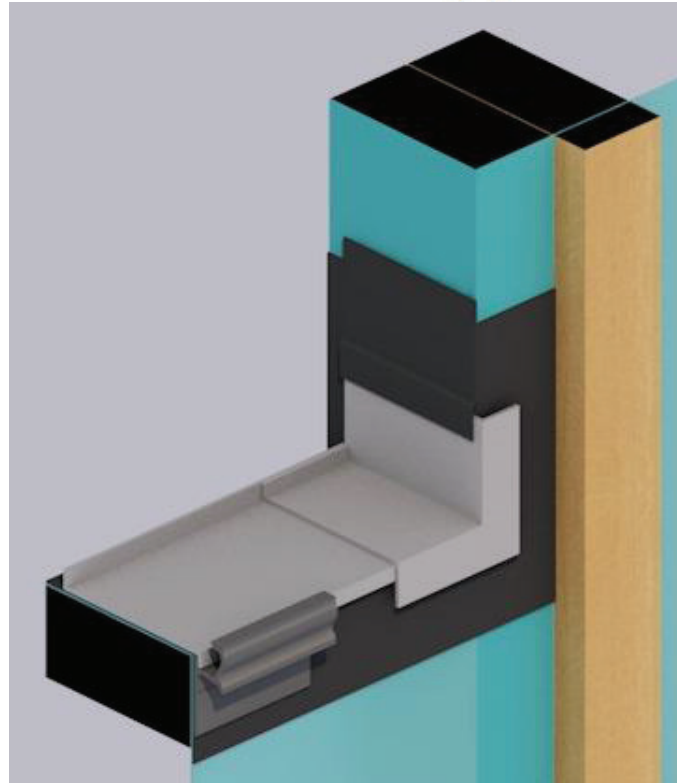
10. APPLY SPECIFIED FOAM TAPE TO HEAD OF JOINERY AND INSTALL JOINERY UNDER HEAD FLASHING AND FIX AS REQUIRED
11. APPLY STONE TO FIBRE CEMENT SHEET WITH ALPINE STONE ADHESIVE AND SEAL JAMB WITH MS SEALANT

**HEAD : FINISHED WALL**



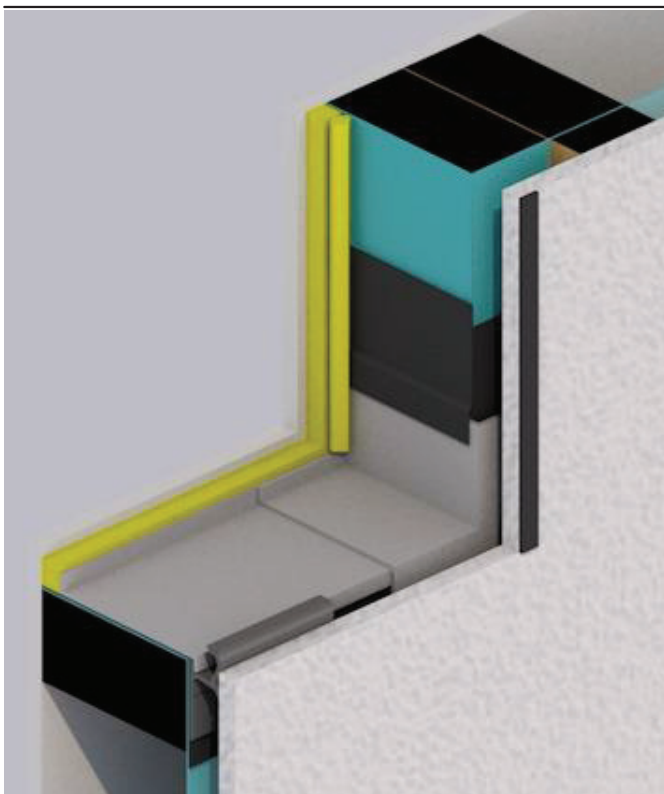
1. TIMBER FRAMING INSTALLED
2. WALL UNDERLAY RUN HORIZONTALLY & DRESSED INTO WINDOW/ DOOR OPENING
3. SPECIFIED FLEXIBLE FLASHING TAPE TO ENTIRE SILL AND 100mm UP AT JAMBS

SILL : WRAP &amp; TAPE



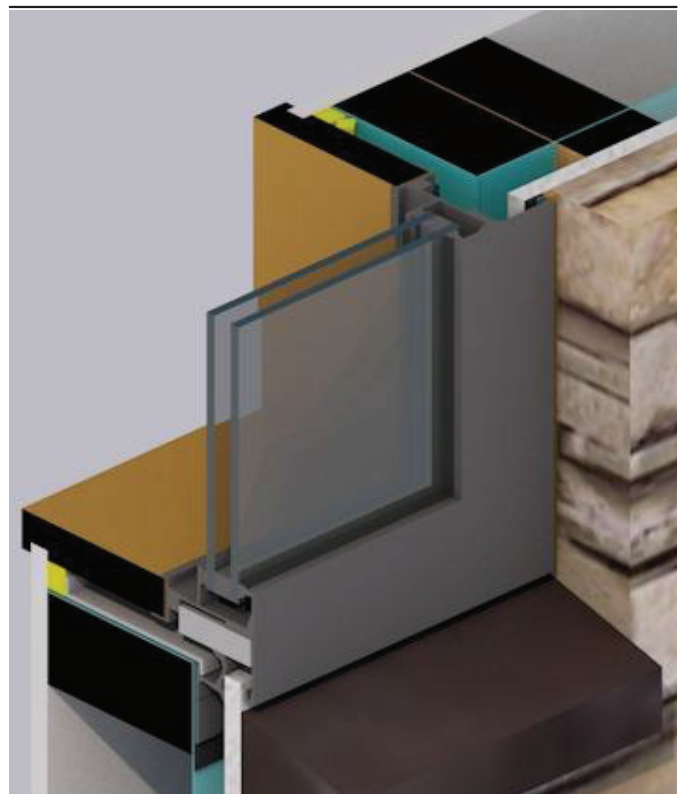
4. REDWAY SILL TRAY ADHERED TO SILL TRAY ENDCAPS AND INSTALLED TO SILL TRIMMER WITH WANZ BAR
5. TOP EDGE OF SILL END CAPS TAPED TO JAMB WITH SPECIFIED FLEXIBLE FLASHING TAPE
6. CAVITY BATTENS INSTALLED

SILL : TRAY &amp; WANZ BAR



7. STONE SHEET FIXED
8. 5mm THICK SPECIFIED FOAM TAPE INSTALLED ONTO STONESHEET AT JAMBS
9. AIR SEAL SHOWN IS INSTALLED AFTER FIXING OF WINDOW

SILL : FIBRE CEMENT SHEET



10. WINDOW SUPPORT BLOCKS FITTED AND JOINERY INSTALLED AND FIXED AS REQUIRED
12. STONE ADHERED TO STONE SHEET WITH ALPINE STONE ADHESIVE AND SEAL JAMB WITH MS SEALANT

SILL : FINISHED WALL