



# Technical & Installation Manual

May 2018 v2.1

0800 000 094 | [info@alpinestone.co.nz](mailto:info@alpinestone.co.nz) | [www.alpinestone.co.nz](http://www.alpinestone.co.nz)

Alpine Stone is a division of Paving Worx Ltd



## Table of Contents

<b>1. GENERAL DESCRIPTION .....</b>	<b>3</b>
<b>2. SCOPE OF USE &amp; LIMITATIONS .....</b>	<b>3</b>
2.1. SCOPE OF USE .....	3
2.2 LIMITATIONS .....	3
<b>3. COMPLIANCE WITH THE BUILDING CODE .....</b>	<b>4</b>
3.1. NZBC COMPLIANCE .....	4
3.2. B1 STRUCTURE .....	4
3.3. B2 DURABILITY .....	4
3.4. E2 EXTERNAL MOISTURE .....	4
3.5. F2 HAZARDOUS BUILDING MATERIALS .....	4
<b>4. LIST OF SPECIFIED COMPONENTS .....</b>	<b>5</b>
4.1. LIST OF SPECIFIED COMPONENTS.....	5
4.2. ALPINE STONE ADHESIVE MORTAR SEALER.....	6
4.3. ALPINE STONE ADHESIVE MORTAR.....	6
4.4. ALPINE STONE VENEER STONES.....	6
4.5. ALPINE STONE Over Non Cavity Block.....	6
<b>5. MAINTENANCE AND WARRANTY .....</b>	<b>6</b>
5.1. MAINTENANCE .....	6
5.2. WARRANTY .....	6
<b>6. CONSTRUCTION DETAILS AND DRAWINGS .....</b>	<b>7</b>
6.1. FRAMING & FRAME PROTECTION REQUIREMENTS .....	7
6.2. CONSTRUCTION GUIDANCE .....	7
6.2.1. INSTALLATION CHECKLIST: .....	7
6.2.2. STONE VENEER CLADDING SYSTEM INSTALLATION.....	7
6.2.3. INSTALLERS REQUIREMENTS .....	8
6.2.4. STONE TIE SPACING.....	9
6.3. PROCESS RESPONSIBILITY FLOW CHART.....	9
6.4. CONSTRUCTION DRAWINGS .....	9
<b>7. QUALITY MANAGEMENT .....</b>	<b>9</b>
7.1. BUILDING PRODUCT QUALITY PLAN .....	9
<b>8. ONSITE CHECKLISTS of the Alpine Stone CLADDING SYSTEM .....</b>	<b>10</b>
8.1. Pre-Alpine Stone Veneer Application Checklist.....	10
8.2. Alpine Stone Veneer Cladding System Installers Checklist.....	12
<b>APPENDIX A – CONSTRUCTION</b>	
<b>DRAWINGS.....FROM</b>	<b>13</b>
DWG – 00 FCS FIXING PLAN & STONE TIE DETAIL	
DWG – 01 WINDOW HEAD DETAIL	
DWG – 02 WINDOW SILL DETAIL	
DWG – 03 WINDOW JAMB DETAIL	
DWG – 04 PLAN VIEW OF EXTERNAL CORNER	
DWG – 05 PLAN VIEW OF INTERNAL CORNER	
DWG – 06 SLAB EDGE DETAIL	
DWG – 07 REBATED SLAB EDGE DETAIL	
DWG – 08 SOFFIT DETAIL	
DWG – 09 SLOPING SOFFIT DETAIL	
DWG – 10 TRANSVERSE APRON DETAIL	
DWG – 11 PARALLEL APRON DETAIL	
DWG – 12 PARAPET/BALUSTRADE DETAIL	
DWG – 13 HORIZONTAL CONTROL JOINT	
DWG – 14 PLAN VIEW OF VERTICAL CONTROL JOINT DETAIL	
DWG – 15 METERBOX DETAIL	
DWG – 16 PENETRATION DETAIL	
DWG – 17 HORIZONTAL JOINT WITH ALTERNATIVE CLADDING	
DWG – 18 PLAN VIEW OF VERTICAL JOINT WITH ALTERNATIVE CLADDING	
DWG – 19 PLAN VIEW OF EXTERNAL CORNER JOINT WITH ALTERNATIVE CLADDING	
DWG – 20 PLAN VIEW OF INTERNAL CORNER JOINT WITH ALTERNATIVE CLADDING	
DWG – 21 PLAN VIEW OF COLUMN DETAIL	
DWG – 22 COLUMN BASE DETAIL	
DWG – 23 HALF COLUMN DETAIL	
DWG – 24 HALF COLUMN CAPPING DETAIL	
DWG – 25 PLAN VIEW OF POLY-COLUMN DETAIL	
DWG – 26 WINDOW HEAD 3D SEQUENCE	
DWG – 27 WINDOW SILL 3D SEQUENCE	

## 1. GENERAL DESCRIPTION

The Alpine Stone veneer cladding system is an exterior wall cladding utilizing a thin stone “veneer” adhered to BGC Stonesheet or Sumner backing board, attached over battens to the framing. Alpine Stone Veneer provides an attractive, medium weight, durable cladding solution that is perfectly suited to the needs of residential housing and light commercial buildings. Due to the fact that the stone is weight loaded to the wall to which it is adhered to an engineered footing is NOT required.

This technical manual outlines the typical installation and details of the Alpine Stone veneer cladding system. If specifiers require additional or modified details, please contact Alpine Stone on 0800 000 094.

**Alpine Stone veneer has been appraised by BEAL laboratories (Appraisal No. C1472) in Wellington NZ and meets or exceeds the relevant performance standards.**

The Alpine Stone veneer cladding system utilises 40mm to 60mm thick manufactured stone ‘pieces’ or small set size stone ‘panels’ which are adhered to a backing board especially designed for this type of exterior cladding.

Typical properties of ‘Alpine Stone pieces’;

- Sizes approx. 40mm to 60mm thick.
- Mass/m<sup>2</sup> 60-70kg/m<sup>2</sup> depending on style of stone (Including Adhesive Mortar)

### Wind Zone.

- Alpine Stone veneer cladding system can be used in up to and including Extra High wind zones as defined in NZS 3604:2011 (utilising proprietary Alpine Stone mechanical ties)

## 2. SCOPE OF USE & LIMITATIONS

### 2.1 SCOPE OF USE

- The Alpine Stone veneer cladding system is intended to be used as a masonry product used as a veneer cladding, installed onto a medium density fibre cement sheet(FCS) over cavity battens and a frame protection system, installed over treated timber framing or light gauge galvanised steel framing, for residential and light commercial construction, in wind zones up to and including ‘Extra High’. Timber framing shall be constructed as per NZS 3604 and light gauge steel framing constructed as per NASH3405. Where referred to in this document as “Stone”, the meaning refers to a manufactured product.
- This Beal Appraisal C1472 is for when required for consent purposes under the Building Code. All other applications fall under decorative and therefore are not covered by the Appraisal.

### 2.2 LIMITATIONS

- The Alpine Stone veneer cladding system is required to be designed and installed according to the details and drawings described in this technical and installation manual, by Alpine Stone’s trained and approved installers. (Except in some situations where the building code does not apply e.g. decorative, meaning landscape and interior applications also some exterior applications, where approved in writing by Alpine Stone) BGC Stonesheet / Sumner backing boards are a fibre-cement based product designed to adhere stone veneer to. The dust produced when cutting or grinding them contains crystalline silica, this is irritating to the eyes, skin and the respiratory system. Inhalation of this dust can cause irreversible damage to health. Wear suitable personal protective equipment (PPE) e.g. Approved gloves, mask and eye protection at all times. When cutting, drilling or grinding do so in an open air

environment, or areas that are well ventilated. The use of water will reduce dust but beware of electrical equipment when using water. All aspects of cutting, drilling or grinding must comply with the latest regulations of the Occupational Safety and Health division of MBIE. The adhesive mortar components shall be stored on site and kept covered & free of dampness until required. Care should be taken to limit damage to the packaging when handling.

### **3. COMPLIANCE WITH THE BUILDING CODE**

#### **3.1. NZBC COMPLIANCE**

- The Alpine Stone veneer cladding system complies with the following clauses of the New Zealand Building Code:

**B1** - Structure

**B2** - Durability

**E2** - External Moisture

**F2** - Hazardous Building Materials

#### **3.2 B1 STRUCTURE**

- The Alpine Stone veneer cladding system when installed and maintained as per this manual is able to withstand up to and including Extra High wind zones as described in NZS 3604:2011. The stone veneer cladding system if installed as per this manual will meet the requirements of NZBC Clause B1.3.2 and B1.3.3 (a), (f) & (h).

#### **3.3 B2 DURABILITY**

- The Alpine Stone veneer cladding system when installed as per this manual will meet the requirements of NZBC Clause B2.3.1(a).

#### **3.4 E2 EXTERNAL MOISTURE**

- The Alpine Stone veneer cladding system contributes to the requirements of NZBC E2.3.2 relating to the resistance of water penetration, providing the integrity of the specified cladding system is maintained. The nominal 20mm cavity is provided to:
  - Provide air space permitting air to circulate within the cavity and help dry out any dampness.
  - Allow moisture to run down the inside of the cavity and escape through the vents or cavity closer.

#### **3.5 F2 HAZARDOUS BUILDING MATERIALS**

- In reference to NZBC Clause F2.3.1 regarding Hazardous Building Materials, the Alpine Stone veneer cladding system is non-hazardous.

## 4. LIST OF SPECIFIED COMPONENTS

### 4.1 LIST OF SPECIFIED COMPONENTS

Approved products include either:

#### 4.1a. Frame Protection System

- Tekton House Wrap – Marshall Water Proofing underlay products (Appraisal 548(2013))
- Pro Clima SOLITEX (Appraisal GM-CM30032)
- Frame Protection System Ltd – Fakro (Appraisal BCS-172217-CMNZ)

#### 4.1b. Flashing Tape

- As specified by frame protection supplier

#### 4.1c. Foam tape

- Tape Spec PVC closed cell foam tape (Appraisal CA918)
- Premier tapes PVC closed cell foam tape

#### 4.1d. Foam

- Low foaming PU Foam

#### 4.1e. Sill Trays – Incl. support blocks and end caps

- The Sill Tray System from E2 Flashings (Appraisal 977(2017))

#### 4.1f. Battens

- Nominal 20mm x 45mm H3.1(minimum) Treated Dressed timber batten complying with NZS 3602. (Acceptable solution to NZBC)
- Cavibat cavity batten system [www.cavibat.co.nz](http://www.cavibat.co.nz) (Appraisal 524(2012))
- Sumner Cavity Battens (As per Sumner board Appraisal BCS-171817-CMNZ)
- Redway Cavity Closer from E2 Flashings (Appraisal 977(2017))

#### 4.1g. Fasteners for the fibre cement sheets.

- All sheets are to be fixed with 10g x 65mm Stainless steel surefast screws and M6 x 19 x 1.6mm Stainless steel washer at 200mm spacing, 12mm from an edge and 50mm from a corner. (for interior applications, zinc chromate fastenings are acceptable) All to be compliant with AS2098.2:2008. (As per BGC Stonesheet Appraisal C807)

#### 4.1h. Fibre cement sheets

- BGC Stonesheet 7.5mm x 1200mm x 3000mm moisture resistant Stonesheet sheets from BGC. For heights above 4m, 9mm BGC Stonesheet is required.

**Sheet must be fixed with smooth side facing outward** (Appraisal C807)

- Sumner Board, 9mm required for all heights (Appraisal BCS 171817-CMNZ)

#### 4.1i. Render Tape

- Ace Waterproofing Butyl Joint Tape (4420) from Insulation Wholesalers Ltd (Appraisal CA902)
- BGC Render Tape from BGC (As per BGC Stonesheet Appraisal C807)
- Protecto Tape – Marshall Waterproofing

#### 4.1j. Stone Ties

- Alpine Stone proprietary stone ties – Supplied by Alpine Stone

#### 4.1k. Adhesive

- Alpine Stone adhesive mortar – Supplied by Alpine Stone

#### 4.1l. Stone Veneer

- Stone veneer - supplied by Alpine Stone

Provided by and in accordance with their respective Appraisal or Codemark Certs

Alpine Stone  
Appraisal C14272

#### 4.2 Alpine Stone adhesive mortar sealer. (Supplied by Alpine Stone)

- Used for the on site preparation of a basecoat sealer comprising Alpine Stone adhesive polymer mixed with supplied trade mortar to a smooth consistency, equal parts polymer concentrate and mortar by volume and adjusted as applied to suit. A gritty finish is required ensuring that a complete coverage is achieved, touch ups can be done to required areas. Use a roller to apply to all surfaces that are to receive the stone adhesive (refer to the application information in Section 8).

#### 4.3 Alpine Stone Mortar Adhesive

- A two-part adhesive system with water resistant properties. This material is a liquid latex adhesive polymer mixed with clean water and added to the supplied bagged trade mortar.

#### 4.4 Alpine Stone Veneer Stones

- A range of texture and colours are available in varying sizes and thicknesses The range includes architectural accessories - Trim Stones, Sills, Cap Stones and Corner Stone's options

#### 4.5 Alpine Stone Over Non Cavity Block

- Alpine Stone veneer can be applied as cladding over block, only by first sealing the block with Stratmore Ltd's "Protecto-Coat" (fbsltd.co.nz) and then affixing battens and board to the wall, this is to ensure weathertightness. The rest of the install is as directed in this manual.

### 5. MAINTENANCE AND WARRANTY

#### 5.1 MAINTENANCE

The Alpine Stone veneer cladding should be regularly cleaned, at least annually, with a mild detergent wash. mixed and diluted with water. Do not high pressure wash. Inspections of the complete cladding surface must be carried out at least annually at the end of summer. Because of settling after construction, and the slow moisture-loss shrinkage of concrete slabs, it is required that six-monthly visual inspections be carried out within the first 12 months by the home owner. The visual inspection should identify any issues. In the event that an issue is identified, the home owner is required to photograph and email within 14 days to [info@alpinestone.co.nz](mailto:info@alpinestone.co.nz) there findings. If a surface crack is identified and deemed to be less than .5mm, than this is deemed to be an acceptable occurrence. Any cracks greater than .5mm must be reported, there is possibly an underlying issue and should be immediately referred to your builder.

#### 5.2 WARRANTY

Alpine Stone products are warranted for 15 years from purchase date, and covers the original purchaser. This warranty only covers Alpine Stone products used on structures which comply with all New Zealand District Council Codes and New Zealand building standards. The stone veneer must be maintained in accordance with with the maintenance section of the Alpine Stone Technical Manual. Alpine Stone veneer must be installed in accordance with the Alpine Stone Technical and Installation Manual that applies at the time of installation, by a registered approved installer. Any Alpine Stone product deemed to be defective, this warranty is limited to replacement materials only and will be provided free of charge under the terms of the warranty. This warranty does not cover damage resulting from: Settlement of the building or substrate movement, discolouration resulting from, weathering, staining, oxidation, steam cleaning, water blasting etc. contact with chemicals, paint or anything else that will damage Alpine Stone. This warranty only covers manufacturing defects in Alpine Stone products. No responsibility will be taken for labour costs incurred in the removal and replacement of defective product. Any repairs or alterations made after installation is not the responsibility of the installer or the manufacturer. This warranty is only valid if

1: the "PRE-CLADDING INSTALLATION CHECK LIST" has been completed by the LBP holder and counter signed by Alpine Stone. 2: The Installer checklist has been signed and returned. 3: A maintenance record that has been updated at the time of maintenance being undertaken. Items 1 – 3 must be produced in the event of a claim.

## 6. CONSTRUCTION DETAILS AND DRAWINGS

### 6.1 FRAMING & FRAME PROTECTION REQUIREMENTS

- Steel and timber framed wall studs should be placed at not more than 600mm centres and are to be constructed to NZS3604:2011 for timber framing or NASH3405 for light gauge steel framing. Prior to installation of the Alpine Stone cladding system, a 'Frame Protection System', comprising an Alpine Stone specified wall underlay/ wrap must be fixed according with the manufacturer's instructions to the exterior wall framing and dressed into all window and door openings using the wall underlay manufacturer's specified seam tape. Ensure the underlay is installed horizontally and has all perimeter edges and laps taped. Ensure only the manufacturer's propriety boot flashings are used to seal water pipe and conduit penetrations to the wall underlay. On completion of the installation of the Frame Protection System, battens are to be fixed through the underlay to the framing. Note: vertical control joints must be included at 5400mm maximum centres or 6000mm maximum if the wall finishes at an external corner as per the drawings. Responsibility for the locations of these controls joints is with the designer. (see 4a,b)

### 6.2 CONSTRUCTION GUIDANCE

#### 6.2.1 Installation Checklist:

- A Pre-Alpine Stone application checklist needs to be completed and returned to Alpine Stone for sign-off: ensure the builder / LBP has completed items set out in the check list. (See section 8- 'Pre-Alpine Stone Veneer Application Checklist' for details)
- An Installer Pre-Alpine Stone application checklist needs to be completed and returned to Alpine Stone for sign-off by the installer.  
(See section 9 – " Pre-Alpine Stone application checklist – INSTALLER)

#### 6.2.2. Stone Veneer Cladding System Installation:

- Cavity battens are attached to the framing using galvanized/SS nails, or screws to fix the battens to the timber or steel framing.
- Installation of the cavity closer: Fix the Redway cavity closer underneath the bottom edge of the battens to the framing, to form a closed bottom to the cavity space created by the cavity battens.
- Fixing BGC Stonesheet/Sumner Board through 20mm cavity battens: BGC Stonesheet/Sumner Board are fixed using 10g x 65 stainless steel for a 20mm cavity, incorporating M6 x 19mm x 1.6mm washers. Fixing spacing should be 200mm centres. (refer 4h)
- Installation of the Butyl Joint Tape: Once the BGC Stonesheet/Sumner Board have been fixed through the battens to the framing, the joints between sheets and from the edge of the aluminium window joinery to the BGC Stonesheet/Sumner Board, shall be sealed using a specified Butyl Joint Tape. Refer to the drawings / Components list in this Technical Manual.
- Flashings: Ensure all flashings have been placed correctly as per the details in this manual, before cutting the claddings to suit the openings and head flashings. (refer drawings section – Appendix A)
- Installation of the scratch coat: Once the Butyl Joint Tape has been installed, the sealer scratch coat is made up and applied by roller to the BGC Stone Sheet / Sumner Board and Butyl Joint Tape. Application of Alpine Stone veneer starts as soon as sealer scratch coat is applied and still wet. Do not allow to dry completely, reapply if it does.
- Before application of the stone veneer and as you progress throughout the application, it is imperative that the board not be too dry, otherwise it will suck the moisture out of the adhesive mortar upon contact and lead to an inferior bond. On hot or windy days especially, **YOU MUST DAMPEN THE FIBRE CEMENT SHEET & BACK OF**

**STONE VENEER PIECE, “DO NOT SATURATE”.** It is better to have the adhesive mortar on the wetter side, if it does start to dry out then you must add more adhesive polymer concentrate.

- Stone veneer adhesive Mortar: Mix 1-part adhesive polymer concentrate, to 3-parts potable water. A good starting point is: 1L adhesive polymer concentrate to 3L of water making a total 4L of mix. Add this to ½ bag of mortar supplied as part of the kit, till the desired consistency is reached. Do not mix electrically, instead mix manually. Mix consistency should be such that it stays on the trowel when tilted but comes off when trowel is flicked. Apply this adhesive mortar to the back of the stone veneer pieces before placing onto the Fibre Cement Sheet. Apply extra mortar to the back of the stone veneer pieces/panels as this will reduce the need for pointing afterward.
- It is important that any mortar that has found its way onto the face of the stone is left there till the mortar becomes “crumbly”, approx. 45minutes to an hour, depending on temperature. It can then be removed with a trowel and blended in with a small paint brush. A wire brush can be used if necessary.
- A topical or penetrating sealer should be applied to Alpine Stone veneer once installed, in areas that are likely to stay damp for extended periods or exposed to harsh conditions. Please discuss with Alpine Stone if required.
- Once the mix is creamy (desired consistency) this should have a shelf life of up to 60 mins but will be reduced by weather conditions. A small amount of Alpine Stone Adhesive Polymer Concentrate can be added to take the mix back to a desired consistency as referred to previously.

#### 6.2.3 Installer’s Requirements

- Installation of the stone veneer for non-decorative areas should be carried out only by those who have been trained and approved by Alpine Stone. Alpine Stone can be installed as a DIY install in some landscape and interior/exterior applications where council consent is not required.



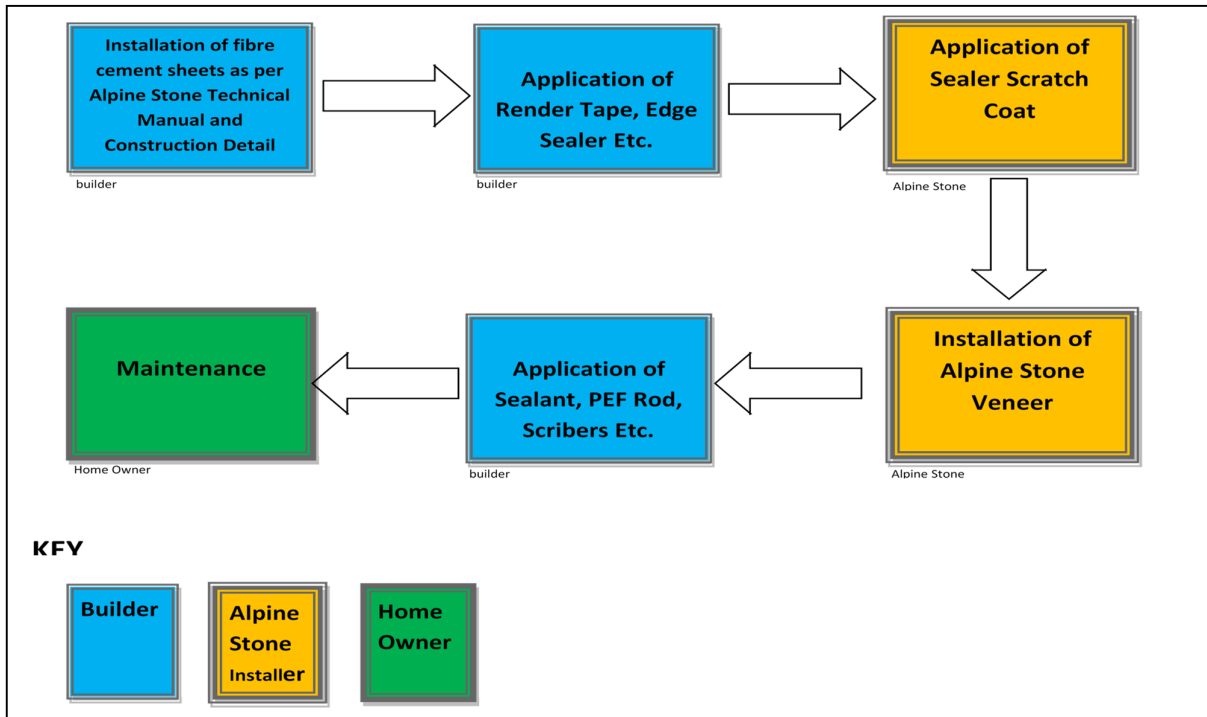
## 6.2.4 STONE TIE SPACING

### ALPINE STONE MECHANICAL “STONE TIE” SPACING

Tie: 16 Gauge 304 Stainless. Screw: 8 Gauge x 65mm Stainless Steel.

Tie Spacing (evenly distributed)	Up to 3m	Above 3m
Wind Zone Low and Medium	N/A	4 per m2
Wind Zone High and Earthquake Zone 1 and 2	4 per m2	6 per m2
Wind zones Very High / Extra High, and Earthquake zones 3 and 4 (use of 9mm BGC Stone sheet/Sumner Board required at all heights)	6 per m2	6 per m2

## 6.4 PROCESS RESPONSIBILITY FLOW CHART



## 6.5 CONSTRUCTION DRAWINGS

The construction drawings are listed in APPENDIX A.

## 7. QUALITY MANAGEMENT

### 7.1. BUILDING PRODUCT QUALITY PLAN

- Quality of the Alpine Stone veneer cladding system is managed through the use of onsite checklists, provided in section 8 of this technical manual and a Building Product Quality Plan (BPQP). THE ALPINE STONE BUILDING PRODUCT QUALITY PLAN v1 is a separate document and is available from Alpine Stone on request.

**8. ONSITE PRE - ALPINE STONE VENEER APPLICATION CHECKLIST**

**ALPINESTONE**  
architectural stone overlay.

Alpine Stone, a division of Paving Worx Ltd  
119 Oropi Rd, Greerton, Tauranga 3112  
PO Box 3157, Greerton, Tauranga 3112  
07 543 2122 | 0800 000 094

[info@alpinestone.co.nz](mailto:info@alpinestone.co.nz) | [www.alpinestone.co.nz](http://www.alpinestone.co.nz)

## **PRE-ALPINE STONE VENEER APPLICATION CHECK LIST**

### **For builders, LBPs and building inspectors**

Consent No: \_\_\_\_\_ Client Name: \_\_\_\_\_

Installation Site Address: \_\_\_\_\_

Builder: \_\_\_\_\_ LBP Number: \_\_\_\_\_

Builder Email: \_\_\_\_\_ Builder Phone: \_\_\_\_\_

Architect/Designer: \_\_\_\_\_ From: \_\_\_\_\_

Installation Date: \_\_\_\_\_

**This form must be completed and returned to Alpine Stone within 30 days to validate warranty. Alpine Stone will sign and return to you.**

#### **Framing**

- All straight and level and constructed as per the relevant Standard Y
- Studs straightened for wall lining before the Alpine Stone cladding system is installed Y

**NOTES** \_\_\_\_\_

#### **Windows**

- Window distance from framing 5 mm from outside of framing to inside flange of aluminium window joinery, as per drawings. Y
- Continuous window support bars and Alpine Stone specified sill pans has been used on all windows. Y

**NOTES** \_\_\_\_\_

#### **Wall underlay**

Chosen Frame Protection System has been installed as per manufacturers and Alpine Stone's instructions to all required window and door openings using the wall underlay manufacturer's specified seam tape. Ensure the underlay is installed horizontally, and has all perimeter edges and laps taped. Y

- Only the manufacturer's approved gaskets are used to seal water pipe and conduit penetrations to the wall underlay. No other trades have been permitted to subsequently penetrate the installed underlay/wrap. Y

Checklist Page 1 of 2

**Fibre Cement Sheets**

- All sheets are fixed using 10g x 65 stainless steel, screws for a nominal 20mm cavity, incorporating M6 x 19mm x 1.6mm washers Y
- All Screws are 12mm from the edge and 50mm from the corner of the sheets. Y
- Battens are fixed in a straight line to bottom of the cladding and to allow for the correct installation of the cavity closer Y
- All external and internal corners and vertical control joints are installed as required in the Alpine Stone Construction Drawings Y
- All sill pans and jamb flashings are in place and sealed with corner soakers as required in the Alpine Stone Construction Drawings Y
- All window head flashings are fixed in place correctly and taped to the wall underlay Y
- All parapet flashings are in place and checked by builder and building Inspector prior to plastering where relevant Y
- All pipe work/penetrations through cladding and stone veneer are to weathertight and filled with low expanding foam and sealed flush with Alpine Stone Specified sealant Y
- Render Tape has been applied to all joins, edges and corners as required in the Alpine Stone Construction Drawings Y
- All penetrations, in regards to electrical, plumbing, gas or other have been installed prior to stone veneer application Y

**NOTES** \_\_\_\_\_

I will give this form and all required documents to the homeowner as required by the NZBC Y

**Variations/ Concerns/ Comments by the builder/LBP:** \_\_\_\_\_

\_\_\_\_\_

\_\_\_\_\_

I \_\_\_\_\_ from \_\_\_\_\_ warrant that I have installed the Alpine Stone Cladding System correctly ready for Alpine Stone's Installer to Apply the Sealer Scratch Coat and Stone Veneer, in accordance with Alpine Stone's Construction Detail and Technical Manual adhering to all NZBC and Regional requirements.

Signed\*: \_\_\_\_\_ Date: \_\_\_\_\_

\*By signing I warrant that am authorised to do so on behalf of the company listed above

Alpine Stone acknowledges receipt of this checklist.

Signed: \_\_\_\_\_ Date: \_\_\_\_\_



**ALPINESTONE**  
architectural stone overlay.

Alpine Stone, a division of Paving Worx Ltd  
PO Box 3157, Greerton, Tauranga 3112  
07 543 2122 | 0800 000 094

[info@alpinestone.co.nz](mailto:info@alpinestone.co.nz) | [www.alpinestone.co.nz](http://www.alpinestone.co.nz)

## ALPINE STONE VENEER CLADDING SYSTEM INSTALLERS CHECKLISTv1.1

\*DO NOT START INSTALLATION UNTILL YOU ARE CONFIDANT ALL IS IN ORDER TO MEET YOUR INSTALL

### OBLIGATIONS

DATE: \_\_\_\_\_ OWNER/APPLICANT: \_\_\_\_\_

HEAD CONTRACTOR/BUILDER \_\_\_\_\_ LBP NUMBER \_\_\_\_\_

INSTALL ADDRESS: \_\_\_\_\_

- A visual inspection was undertaken prior to Alpine Stone Veneer Install. Any defects were brought to attention of the LBP Builder/Head Contractor and rectified. YES
- Cavity closer installed as per the Alpine Stone Limited Cladding System Technical Manual. YES / NA
- Installation of the Render Tape to all required areas as per the Alpine Stone Limited Cladding System Technical Manual YES / NA
- Ensure treated surfaces were free from contaminants and board was wet down with a mist of water if required before application of sealer scratch coat. YES
- Application of the sealer scratch coat has been applied evenly and stone veneer applied over freshly applied scratch coat, wet on wet. YES
- All Stone Veneer joins have had pointing applied and this has been blended to make joins less noticeable, especially on corners. No board is visible between stone veneer and A level has been used to ensure Stone Veneer lines are visibly straight YES
- Excess mortar cleaned off stone face YES
- Finished as per the Alpine Stone Limited Cladding System Technical Manual and Installation guide. YES
- Email Named Pre and Post Photos to Alpine Stone ([info@alpinestone.co.nz](mailto:info@alpinestone.co.nz)) Pre: YES | Post: YES

NAME AND SIGNATURE OF INSTALLER: \_\_\_\_\_ ID \_\_\_\_\_

By signing you warrant that you have competed all your obligations as per the Alpine Stone Technical Manual, the Alpine Stone Install guide and the Alpine Stone BBQP. You will also rectify or cover the rectification should any concerns/issues be raised.

SIGNATURE OF OWNER/APPLICATANT/HEAD CONTRACTOR \_\_\_\_\_

## APPENDIX A – CONSTRUCTION DRAWINGS

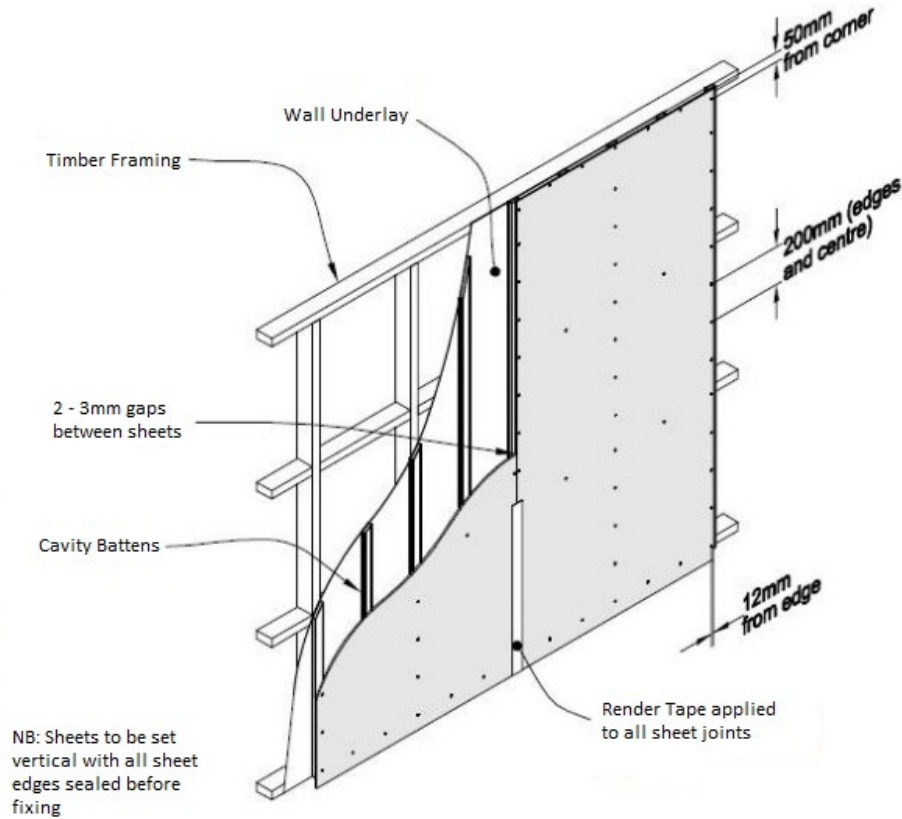
***Note: Drawings are 2:1 when printed at A4***

DWG – 00 FCS FIXING PLAN & STONE TIE DETAIL  
DWG – 01 WINDOW HEAD DETAIL  
DWG – 02 WINDOW SILL DETAIL  
DWG – 03 WINDOW JAMB DETAIL  
DWG – 04 PLAN VIEW OF EXTERNAL CORNER  
DWG – 05 PLAN VIEW OF INTERNAL CORNER  
DWG – 06 SLAB EDGE DETAIL  
DWG – 07 REBATED SLAB EDGE DETAIL  
DWG – 08 SOFFIT DETAIL  
DWG – 09 SLOPING SOFFIT DETAIL  
DWG – 10 TRANSVERSE APRON DETAIL  
DWG – 11 PARALLEL APRON DETAIL  
DWG – 12 PARAPET/BALUSTRADE DETAIL  
DWG – 13 HORIZONTAL CONTROL JOINT  
DWG – 14 PLAN VIEW OF VERTICAL CONTROL JOINT DETAIL  
DWG – 15 METERBOX DETAIL  
DWG – 16 PENETRATION DETAIL  
DWG – 17 HORIZONTAL JOINT WITH ALTERNATIVE CLADDING  
DWG – 18 PLAN VIEW OF VERTICAL JOINT WITH ALTERNATIVE CLADDING  
DWG – 19 PLAN VIEW OF EXTERNAL CORNER JOINT WITH ALTERNATIVE CLADDING  
DWG – 20 PLAN VIEW OF INTERNAL CORNER JOINT WITH ALTERNATIVE CLADDING  
DWG – 21 PLAN VIEW OF COLUMN DETAIL  
DWG – 22 COLUMN BASE DETAIL  
DWG – 23 HALF COLUMN DETAIL  
DWG – 24 HALF COLUMN CAPPING DETAIL  
DWG – 25 WINDOW HEAD 3D SEQUENCE  
DWG – 26 WINDOW SILL 3D SEQUENCE

## Drawing 00

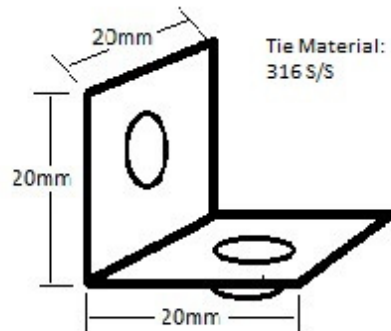
### Alpine Stones Approved Fibre Cement Sheet Fixing Detail

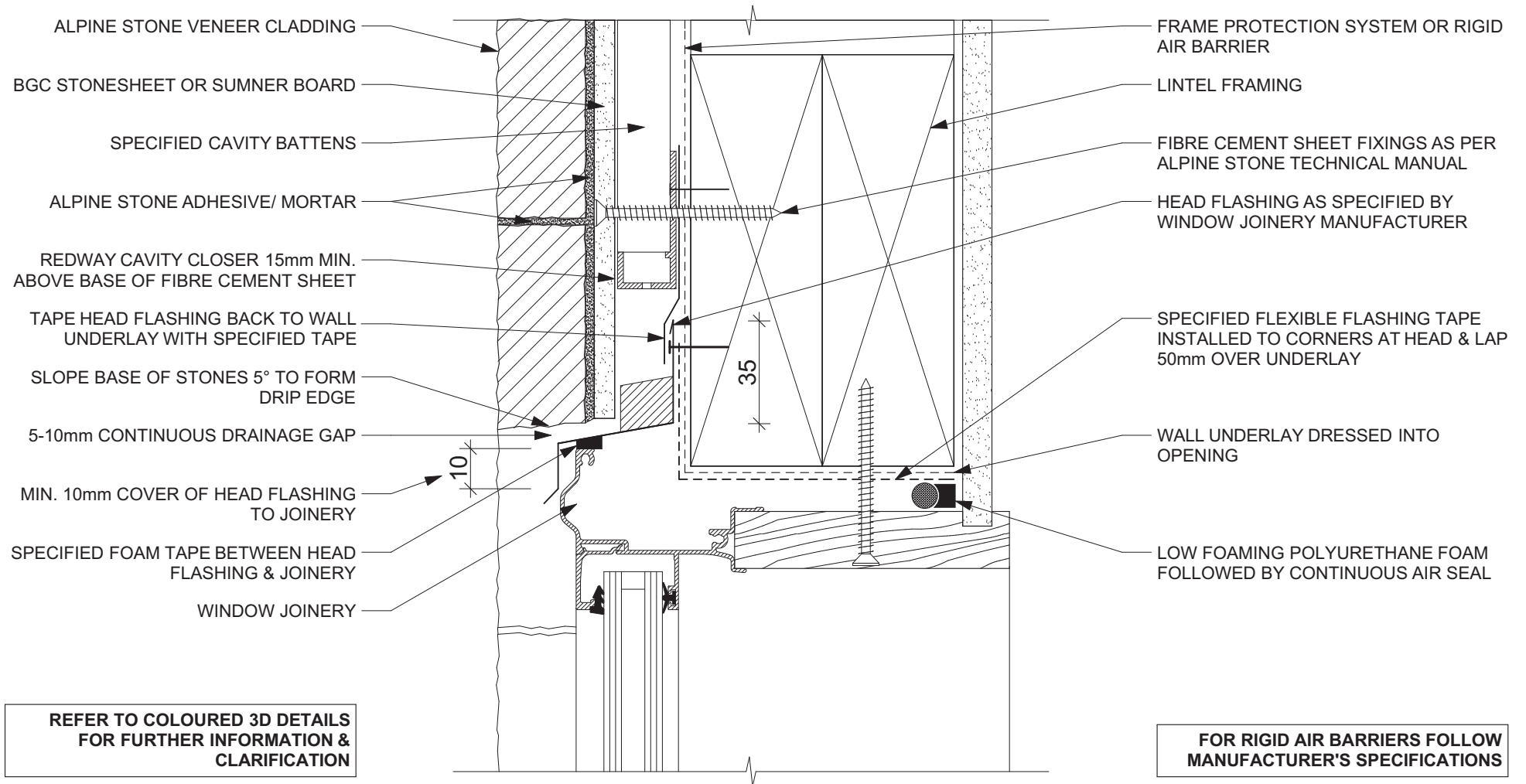
FROM BGC STONE SHEET TECHNICAL DRAWINGS - APPRASIAL C807



### Alpine Stone Tie Detail

#### Alpine Stone Proprietary Stone





DWG - 01

WINDOW HEAD DETAIL

SCALE - 1:2

## ALPINE STONE VENEER CLADDING SYSTEM

VERSION - 16/03/2016

- THESE DRAWINGS MUST BE READ IN CONJUNCTION WITH THE LIST OF SPECIFIED/ACCEPTED PRODUCTS SUPPLIED WITH THE ALPINE STONE TECHNICAL MANUAL.
- SUBSTRATE TO BE PREPPED READY TO APPLY ALPINE STONE VENEER TO. THIS MUST COMPLY WITH ALL RELEVANT STANDARDS AND REQUIREMENTS e.g. COUNCIL, NZBC, ALPINE STONE AND OTHER PRODUCTS DETAILS.
- ANY SCRIBERS, PEF ROD, RENDERS, SEALERS etc (OTHER THAN THE SEALER SCRATCH COAT APPLIED BY ALPINE STONE) REQUIRED AS PART OF THE CONSTRUCTION DETAIL BEFORE AND AFTER INSTALLATION WILL NOT BE DONE BY ALPINE STONE OR IT'S INSTALLERS.



WINDOW JOINERY

PROPRIETARY SUPPORT BLOCKS BY  
JOINERY MANUFACTURER

5mm GAP BEHIND & 6mm DRAINAGE  
GAP UNDER WINDOW FLANGE

MIN. 8mm COVER OF JOINERY TO FIBRE  
CEMENT SHEET

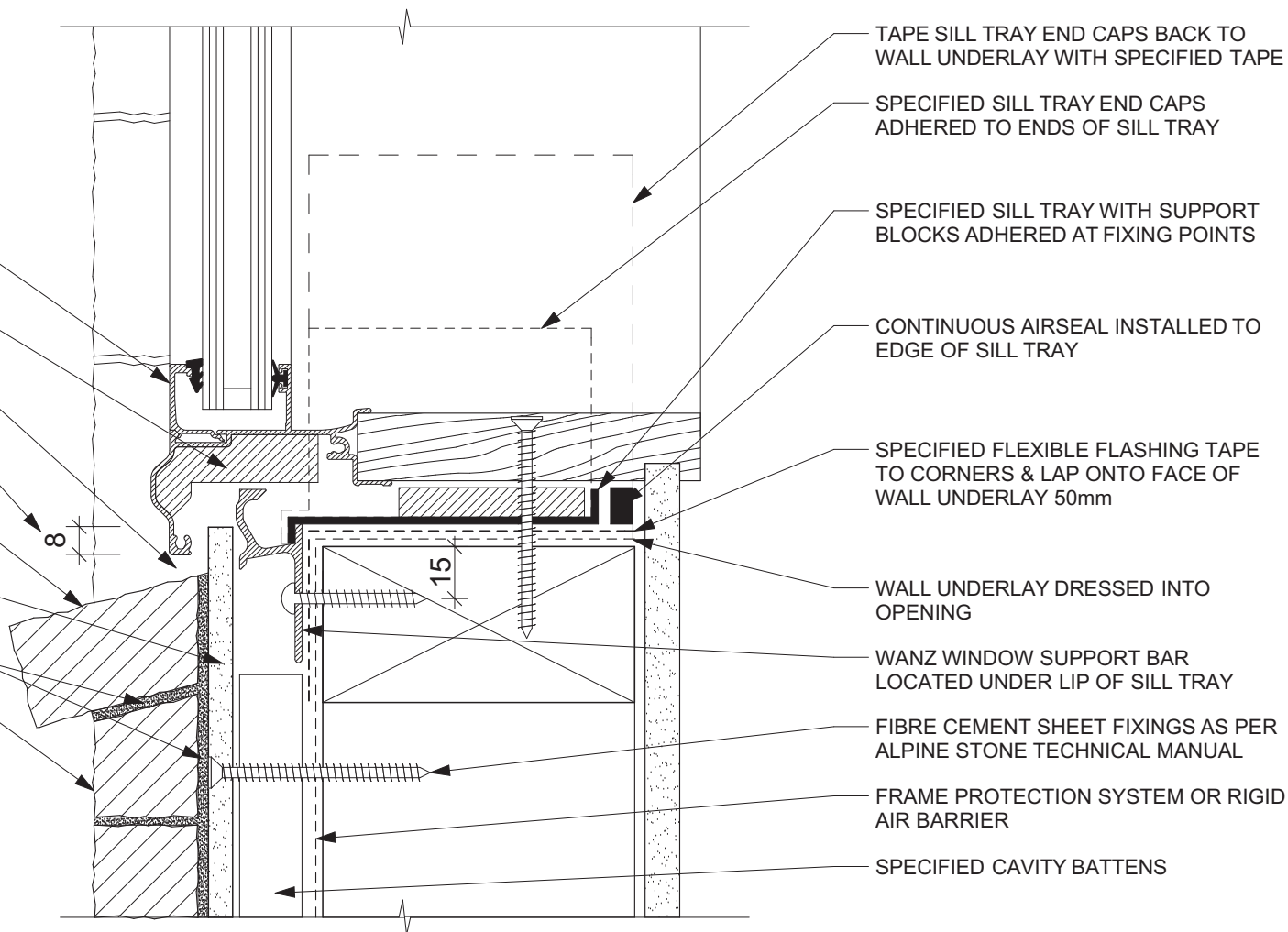
STONE SILL WITH 15° MIN. SLOPE

BGC STONESHEET OR SUMNER BOARD

ALPINE STONE ADHESIVE/ MORTAR

ALPINE STONE VENEER CLADDING

**FLEXIBLE FLASHING TAPE MAY BE  
INSTALLED TO ENTIRE SILL,  
HOWEVER THIS IS NOT REQUIRED  
UNDER THE SPECIFIED SILL TRAY**



SCALE - 1:2

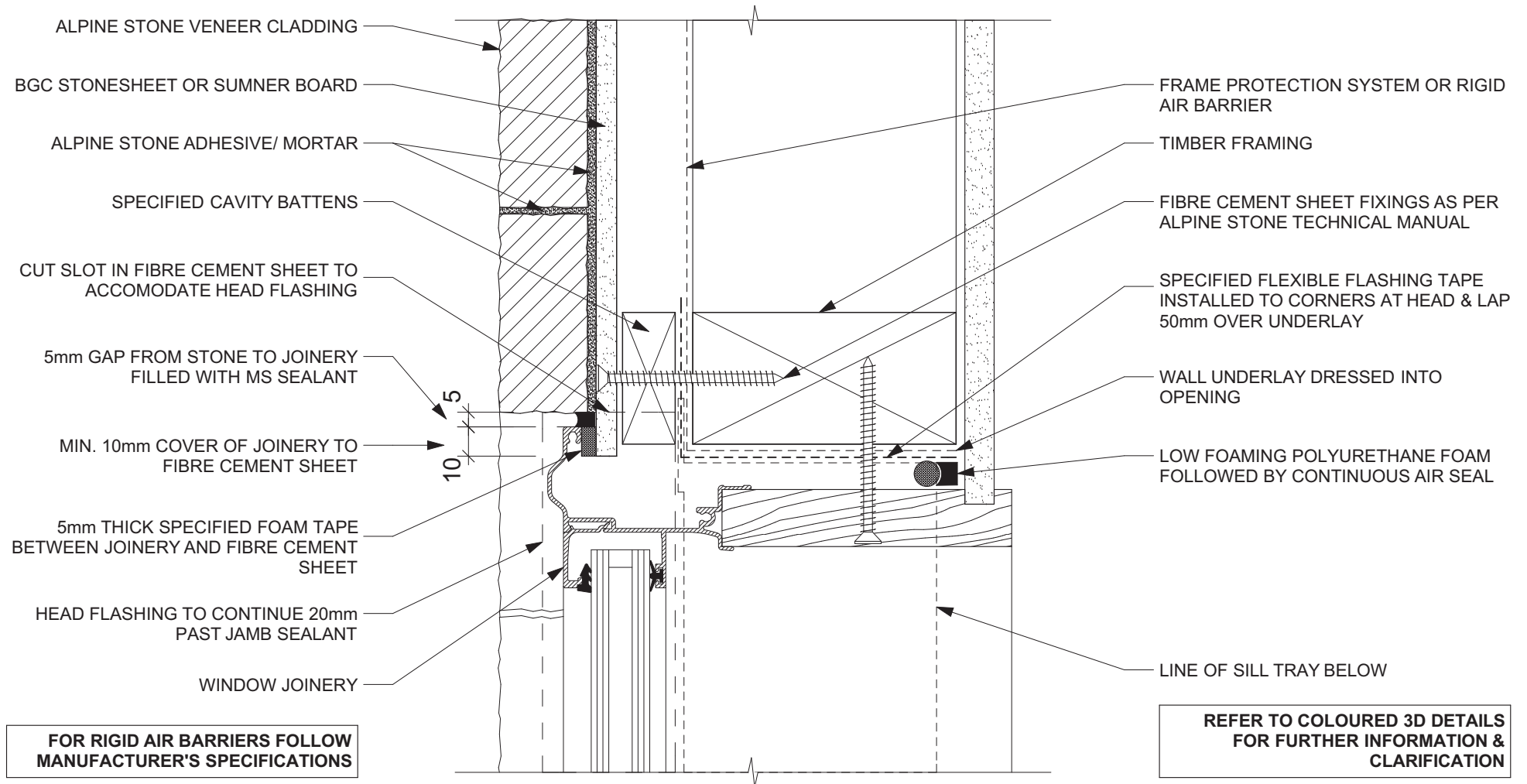
- THESE DRAWINGS MUST BE READ IN CONJUNCTION WITH THE LIST OF SPECIFIED/ACCEPTED PRODUCTS SUPPLIED WITH THE ALPINE STONE TECHNICAL MANUAL.

- SUBSTRATE TO BE PREPPED READY TO APPLY ALPINE STONE VENEER TO. THIS MUST COMPLY WITH ALL RELEVANT STANDARDS AND REQUIREMENTS e.g. COUNCIL, NZBC, ALPINE STONE AND OTHER PRODUCTS DETAILS.

- ANY SCRIBERS, PEF ROD, RENDERERS, SEALERS etc (OTHER THAN THE SEALER SCRATCH COAT APPLIED BY ALPINE STONE) REQUIRED AS PART OF THE CONSTRUCTION DETAIL BEFORE AND AFTER INSTALLATION WILL NOT BE DONE BY ALPINE STONE OR IT'S INSTALLERS.







DWG - 03

WINDOW JAMB DETAIL

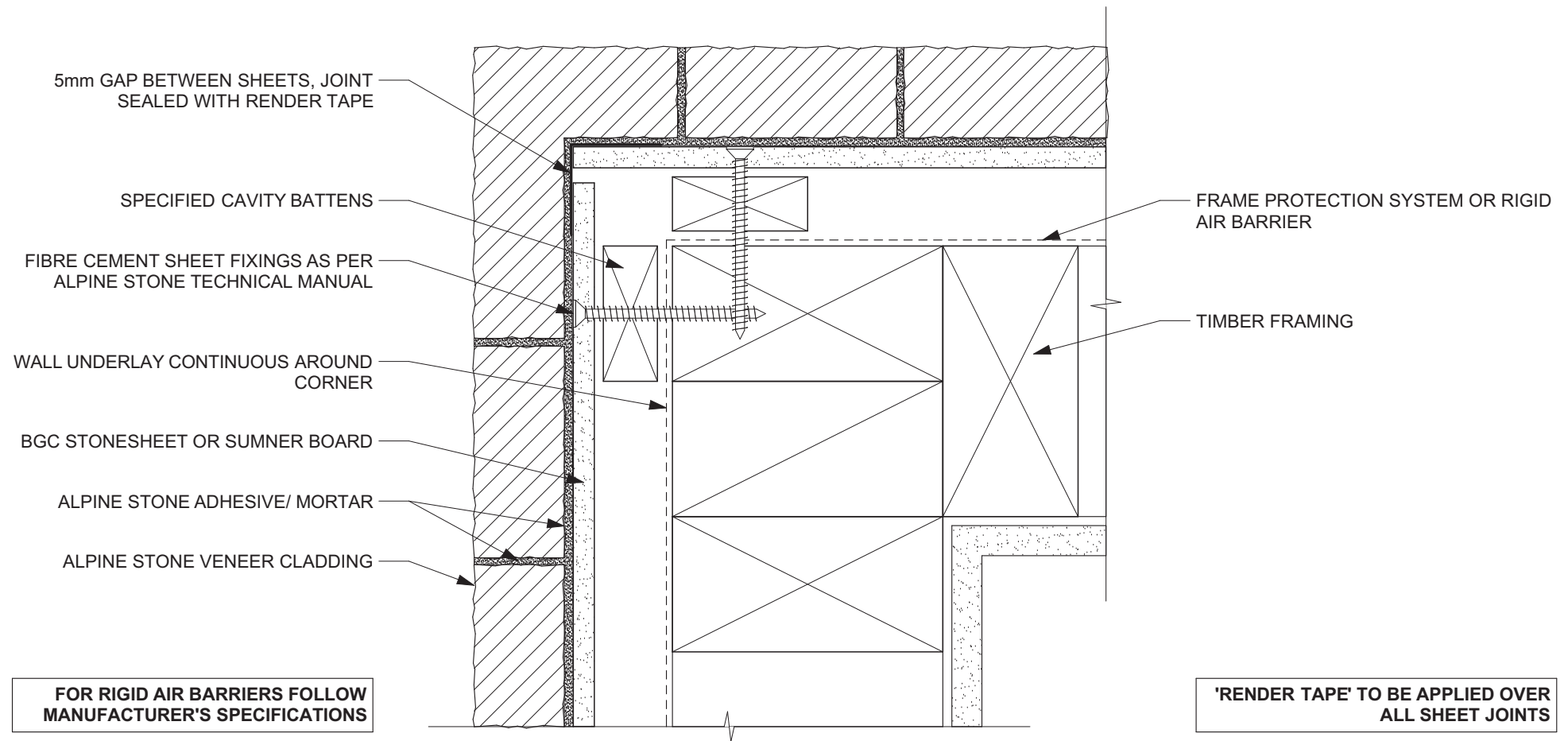
SCALE - 1:2

## ALPINE STONE VENEER CLADDING SYSTEM

VERSION - 16/03/2016

- THESE DRAWINGS MUST BE READ IN CONJUNCTION WITH THE LIST OF SPECIFIED/ACCEPTED PRODUCTS SUPPLIED WITH THE ALPINE STONE TECHNICAL MANUAL.
- SUBSTRATE TO BE PREPPED READY TO APPLY ALPINE STONE VENEER TO. THIS MUST COMPLY WITH ALL RELEVANT STANDARDS AND REQUIREMENTS e.g. COUNCIL, NZBC, ALPINE STONE AND OTHER PRODUCTS DETAILS.
- ANY SCRIBERS, PEF ROD, RENDERS, SEALERS etc (OTHER THAN THE SEALER SCRATCH COAT APPLIED BY ALPINE STONE) REQUIRED AS PART OF THE CONSTRUCTION DETAIL BEFORE AND AFTER INSTALLATION WILL NOT BE DONE BY ALPINE STONE OR ITS INSTALLERS.





DWG - 04

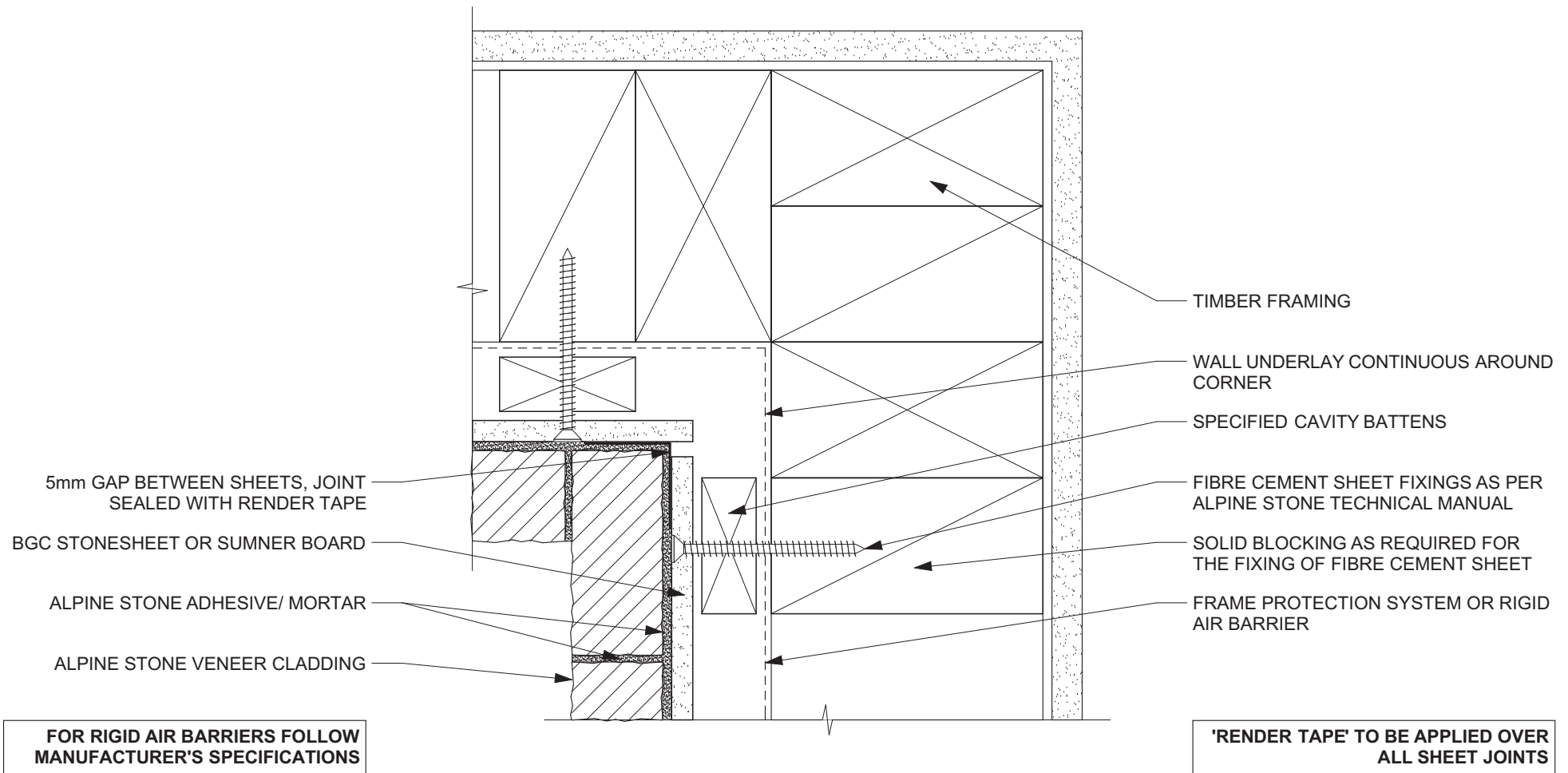
PLAN VIEW OF EXTERNAL CORNER DETAIL

SCALE - 1:2

## ALPINE STONE VENEER CLADDING SYSTEM VERSION - 16/03/2016

- THESE DRAWINGS MUST BE READ IN CONJUNCTION WITH THE LIST OF SPECIFIED/ACCEPTED PRODUCTS SUPPLIED WITH THE ALPINE STONE TECHNICAL MANUAL.
- SUBSTRATE TO BE PREPPED READY TO APPLY ALPINE STONE VENEER TO. THIS MUST COMPLY WITH ALL RELEVANT STANDARDS AND REQUIREMENTS e.g. COUNCIL, NZBC, ALPINE STONE AND OTHER PRODUCTS DETAILS.
- ANY SCRIBERS, PEF ROD, RENDERS, SEALERS etc (OTHER THAN THE SEALER SCRATCH COAT APPLIED BY ALPINE STONE) REQUIRED AS PART OF THE CONSTRUCTION DETAIL BEFORE AND AFTER INSTALLATION WILL NOT BE DONE BY ALPINE STONE OR IT'S INSTALLERS.





DWG - 05

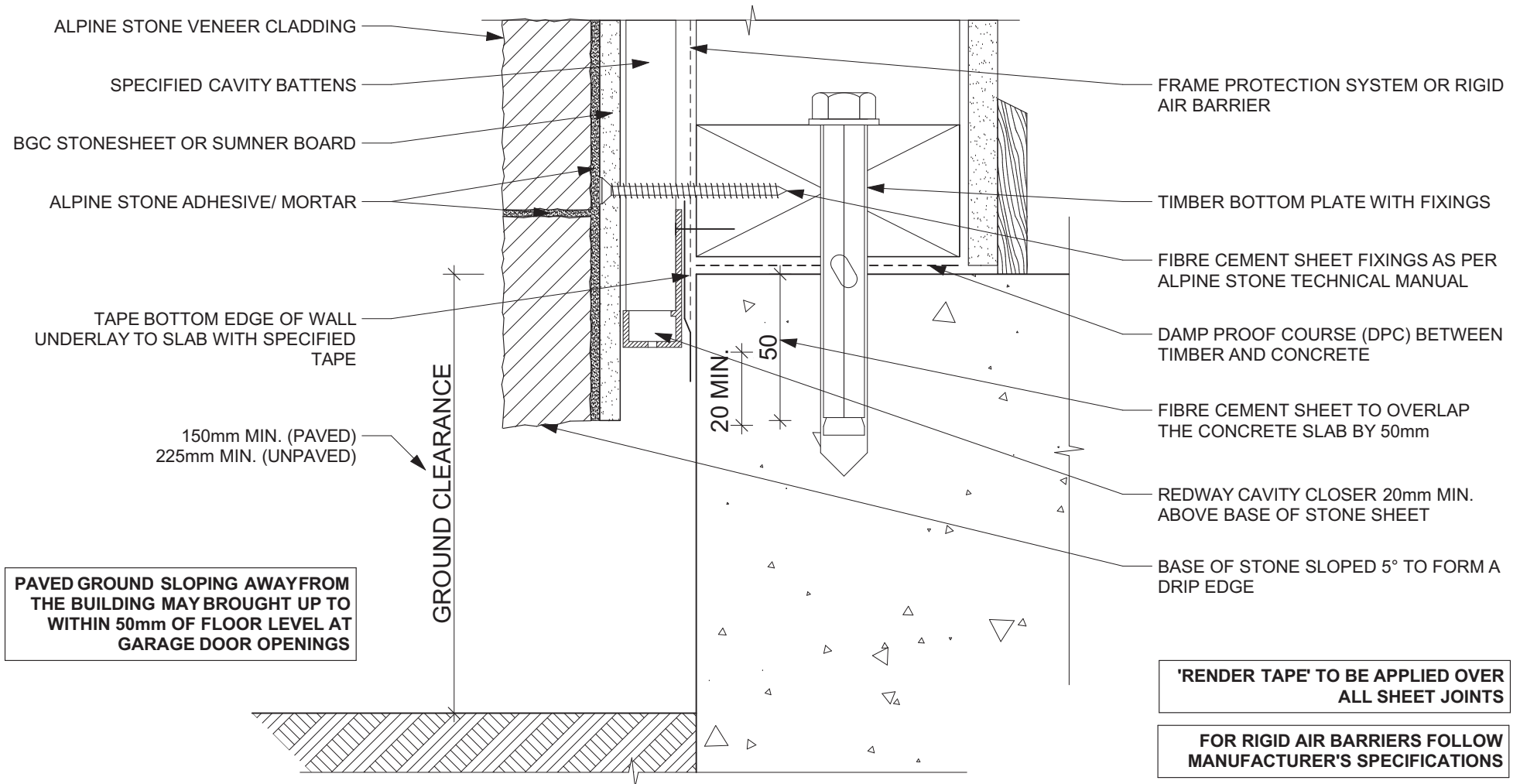
PLAN VIEW OF INTERNAL CORNER DETAIL

SCALE - 1:2

## ALPINE STONE VENEER CLADDING SYSTEM VERSION - 16/03/2016

- THESE DRAWINGS MUST BE READ IN CONJUNCTION WITH THE LIST OF SPECIFIED/ACCEPTED PRODUCTS SUPPLIED WITH THE ALPINE STONE TECHNICAL MANUAL.
- SUBSTRATE TO BE PREPPED READY TO APPLY ALPINE STONE VENEER TO. THIS MUST COMPLY WITH ALL RELEVANT STANDARDS AND REQUIREMENTS e.g. COUNCIL, NZBC, ALPINE STONE AND OTHER PRODUCTS DETAILS.
- ANY SCRIBERS, PEF ROD, RENDERS, SEALERS etc (OTHER THAN THE SEALER SCRATCH COAT APPLIED BY ALPINE STONE) REQUIRED AS PART OF THE CONSTRUCTION DETAIL BEFORE AND AFTER INSTALLATION WILL NOT BE DONE BY ALPINE STONE OR IT'S INSTALLERS.





DWG - 06

SLAB EDGE DETAIL

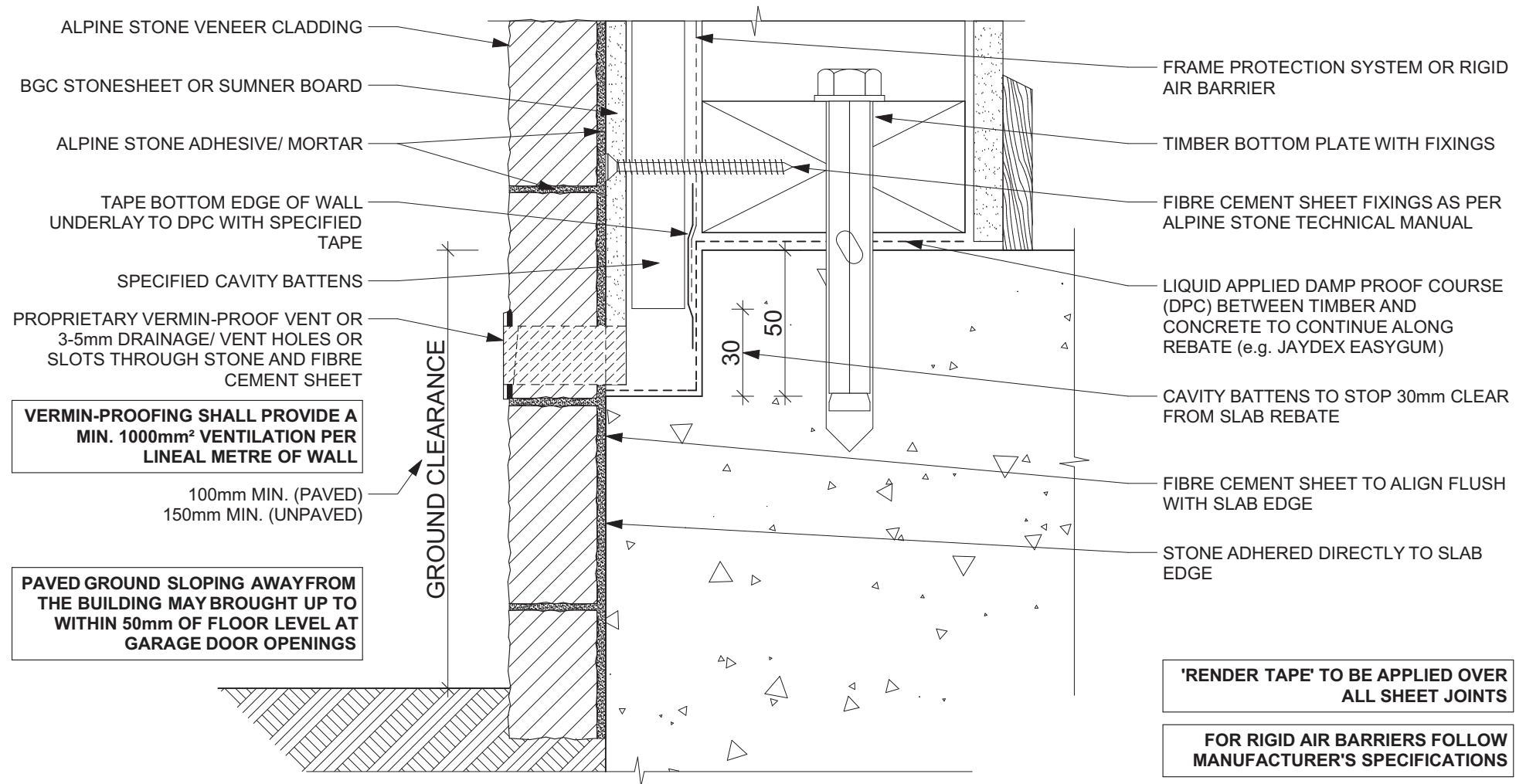
SCALE - 1:2

## ALPINE STONE VENEER CLADDING SYSTEM

VERSION - 16/03/2016

- THESE DRAWINGS MUST BE READ IN CONJUNCTION WITH THE LIST OF SPECIFIED/ACCEPTED PRODUCTS SUPPLIED WITH THE ALPINE STONE TECHNICAL MANUAL.
- SUBSTRATE TO BE PREPPED READY TO APPLY ALPINE STONE VENEER TO. THIS MUST COMPLY WITH ALL RELEVANT STANDARDS AND REQUIREMENTS e.g. COUNCIL, NZBC, ALPINE STONE AND OTHER PRODUCTS DETAILS.
- ANY SCRIBERS, PEF ROD, RENDERERS, SEALERS etc (OTHER THAN THE SEALER SCRATCH COAT APPLIED BY ALPINE STONE) REQUIRED AS PART OF THE CONSTRUCTION DETAIL BEFORE AND AFTER INSTALLATION WILL NOT BE DONE BY ALPINE STONE OR ITS INSTALLERS.





DWG - 07

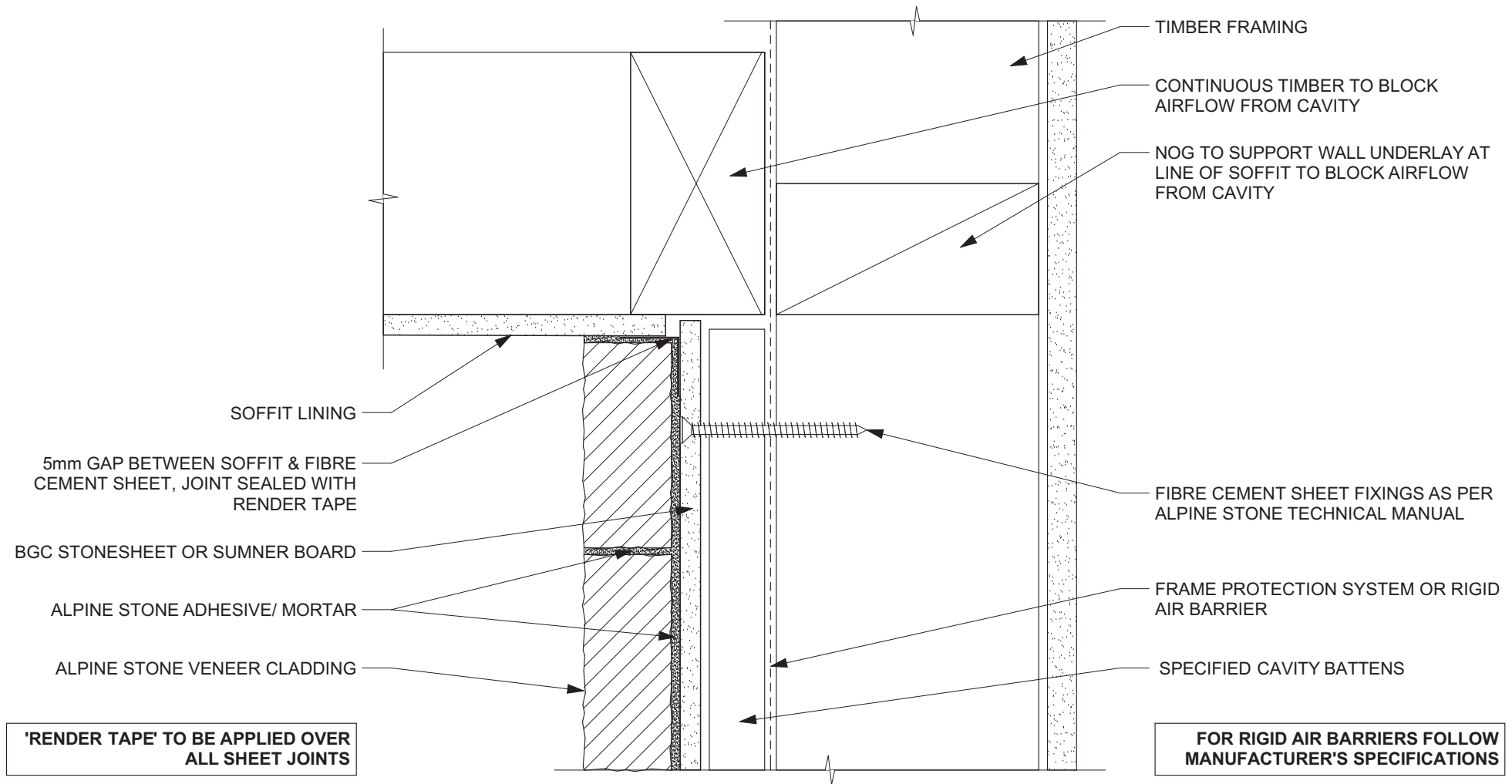
REBATED SLAB EDGE DETAIL

SCALE - 1:2

## ALPINE STONE VENEER CLADDING SYSTEM VERSION - 16/03/2016

- THESE DRAWINGS MUST BE READ IN CONJUNCTION WITH THE LIST OF SPECIFIED/ACCEPTED PRODUCTS SUPPLIED WITH THE ALPINE STONE TECHNICAL MANUAL.
- SUBSTRATE TO BE PREPPED READY TO APPLY ALPINE STONE VENEER TO. THIS MUST COMPLY WITH ALL RELEVANT STANDARDS AND REQUIREMENTS e.g. COUNCIL, NZBC, ALPINE STONE AND OTHER PRODUCTS DETAILS.
- ANY SCRIBERS, PEF ROD, RENDERS, SEALERS etc (OTHER THAN THE SEALER SCRATCH COAT APPLIED BY ALPINE STONE) REQUIRED AS PART OF THE CONSTRUCTION DETAIL BEFORE AND AFTER INSTALLATION WILL NOT BE DONE BY ALPINE STONE OR IT'S INSTALLERS.





DWG - 08

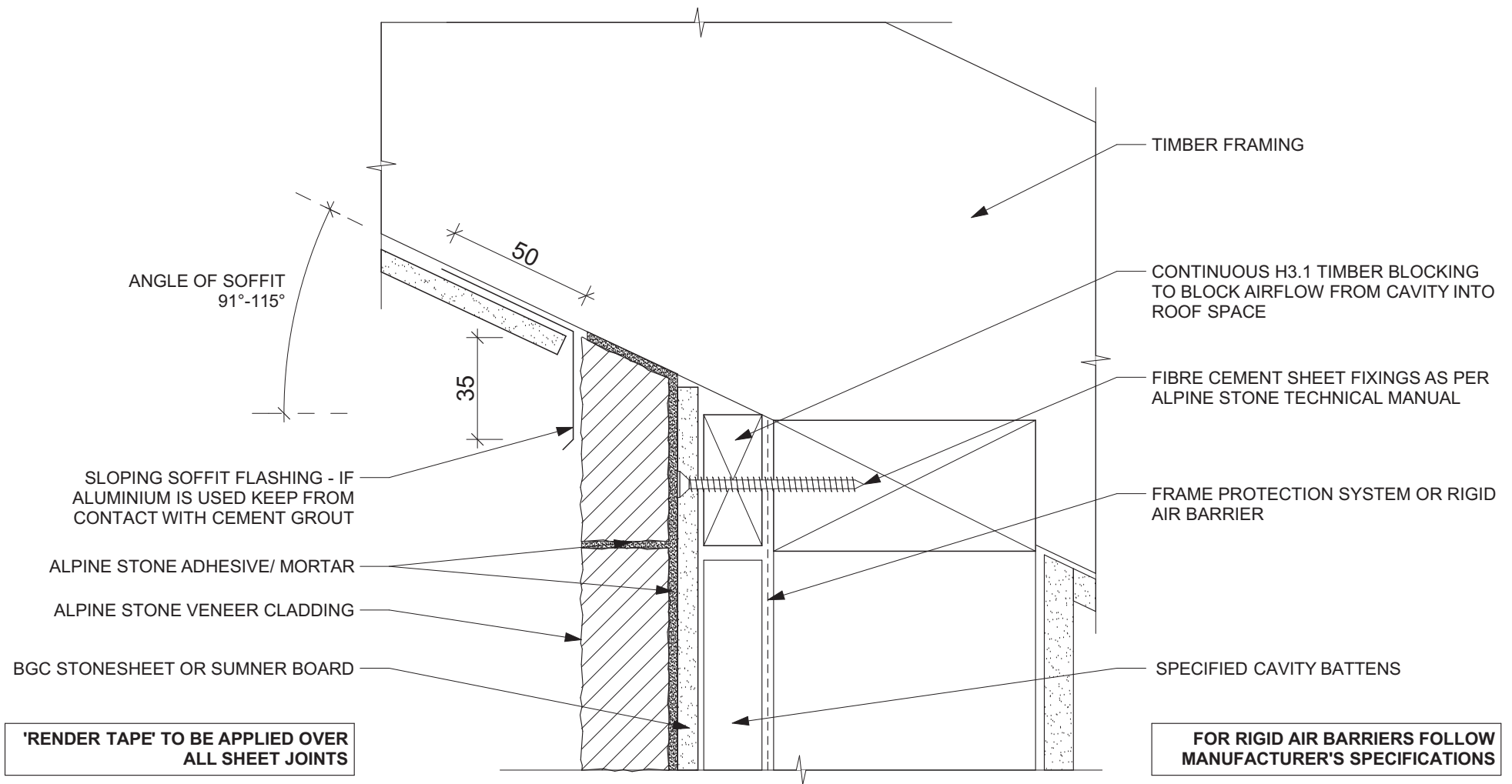
SOFFIT DETAIL

SCALE - 1:2

## ALPINE STONE VENEER CLADDING SYSTEM VERSION - 16/03/2016

- THESE DRAWINGS MUST BE READ IN CONJUNCTION WITH THE LIST OF SPECIFIED/ACCEPTED PRODUCTS SUPPLIED WITH THE ALPINE STONE TECHNICAL MANUAL.
- SUBSTRATE TO BE PREPPED READY TO APPLY ALPINE STONE VENEER TO. THIS MUST COMPLY WITH ALL RELEVANT STANDARDS AND REQUIREMENTS e.g. COUNCIL, NZBC, ALPINE STONE AND OTHER PRODUCTS DETAILS.
- ANY SCRIBERS, PEF ROD, RENDERS, SEALERS etc (OTHER THAN THE SEALER SCRATCH COAT APPLIED BY ALPINE STONE) REQUIRED AS PART OF THE CONSTRUCTION DETAIL BEFORE AND AFTER INSTALLATION WILL NOT BE DONE BY ALPINE STONE OR ITS INSTALLERS.





DWG - 09

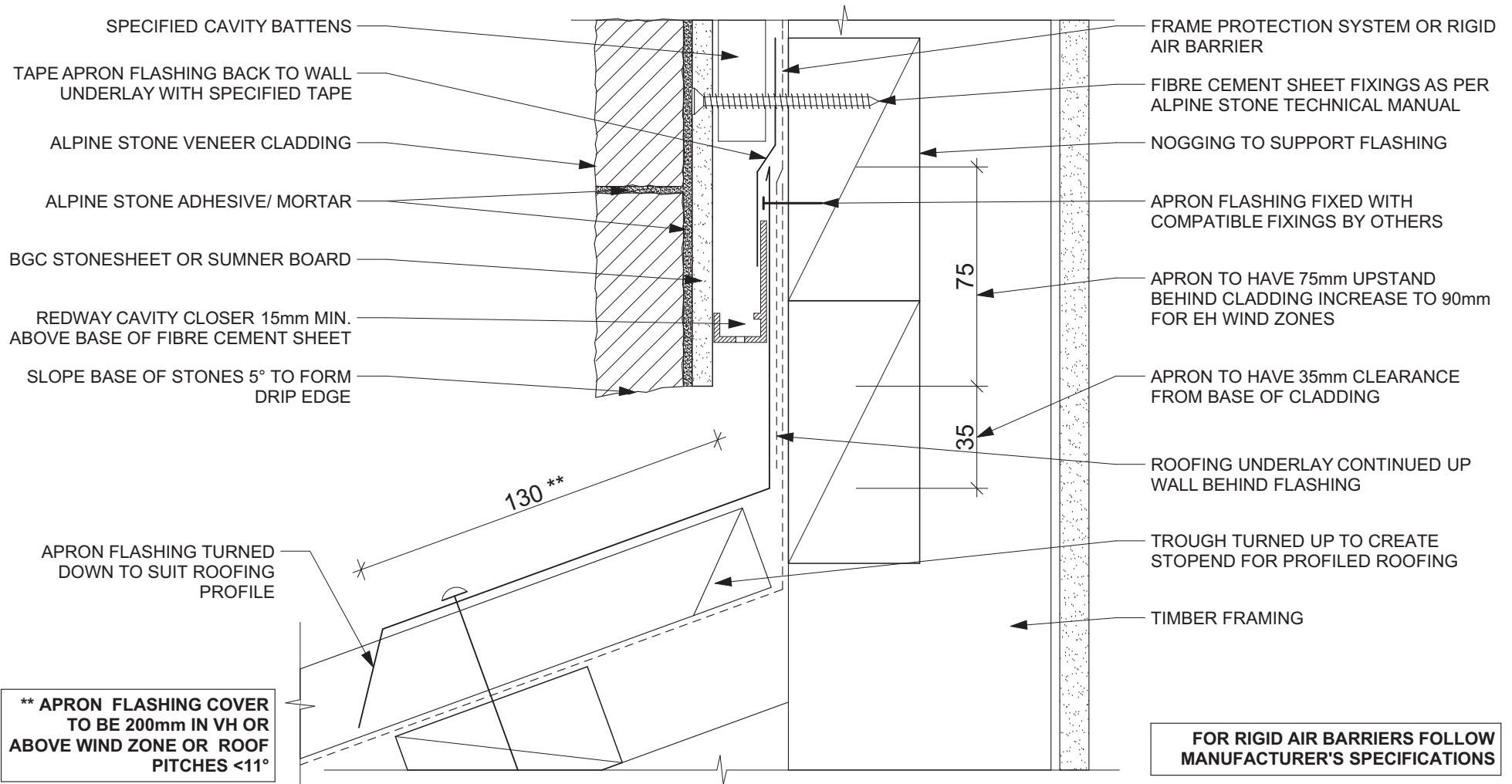
SLOPING SOFFIT DETAIL

SCALE - 1:2

## ALPINE STONE VENEER CLADDING SYSTEM VERSION - 16/03/2016

- THESE DRAWINGS MUST BE READ IN CONJUNCTION WITH THE LIST OF SPECIFIED/ACCEPTED PRODUCTS SUPPLIED WITH THE ALPINE STONE TECHNICAL MANUAL.
- SUBSTRATE TO BE PREPPED READY TO APPLY ALPINE STONE VENEER TO. THIS MUST COMPLY WITH ALL RELEVANT STANDARDS AND REQUIREMENTS e.g. COUNCIL, NZBC, ALPINE STONE AND OTHER PRODUCTS DETAILS.
- ANY SCRIBERS, PEF ROD, RENDERS, SEALERS etc (OTHER THAN THE SEALER SCRATCH COAT APPLIED BY ALPINE STONE) REQUIRED AS PART OF THE CONSTRUCTION DETAIL BEFORE AND AFTER INSTALLATION WILL NOT BE DONE BY ALPINE STONE OR ITS INSTALLERS.





DWG - 10

TRANSVERSE APRON DETAIL

SCALE - 1:2

## ALPINE STONE VENEER CLADDING SYSTEM VERSION - 16/03/2016

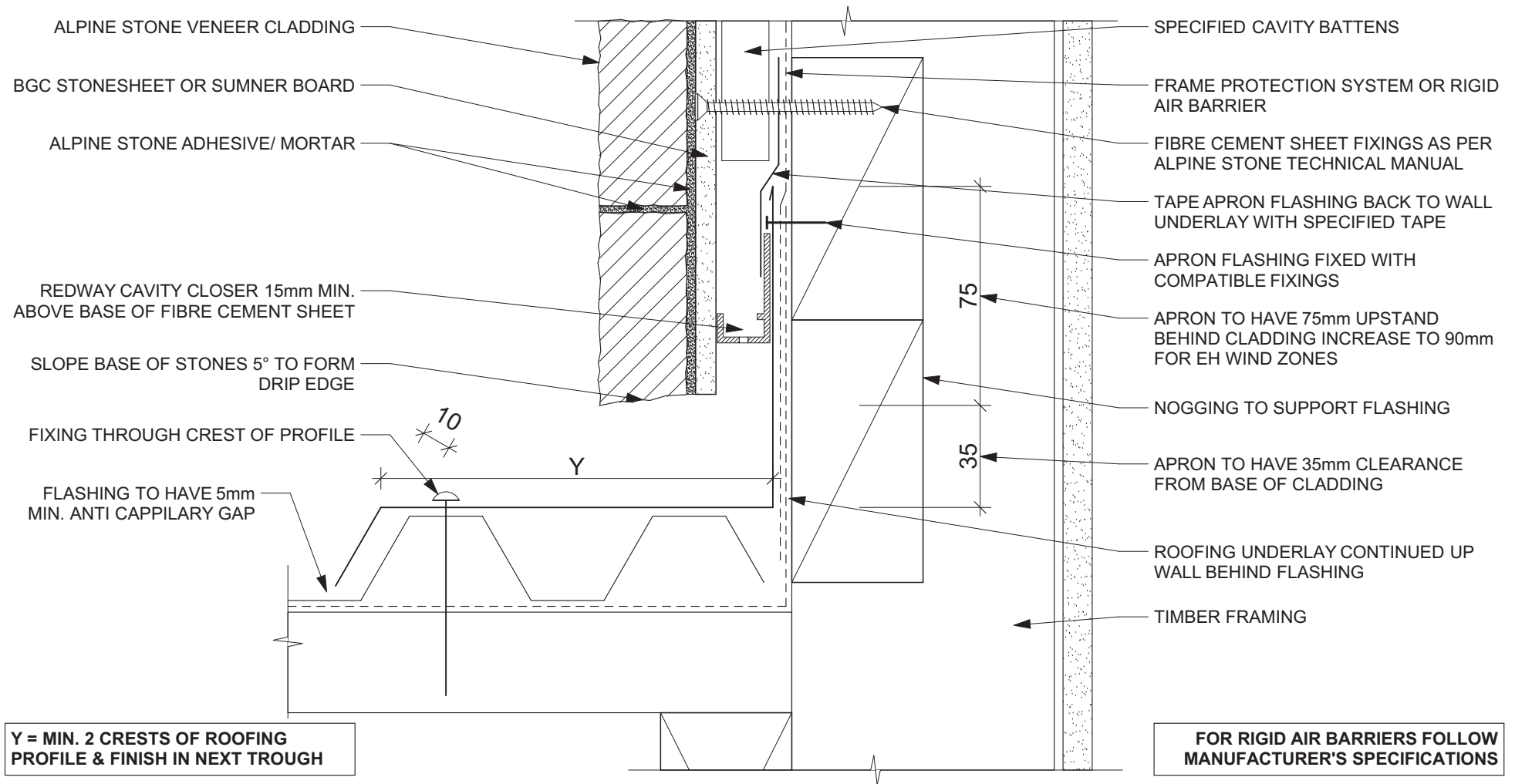
- THESE DRAWINGS MUST BE READ IN CONJUNCTION WITH THE LIST OF SPECIFIED/ACCEPTED PRODUCTS SUPPLIED WITH THE ALPINE STONE TECHNICAL MANUAL.

- SUBSTRATE TO BE PREPPED READY TO APPLY ALPINE STONE VENEER TO. THIS MUST COMPLY WITH ALL RELEVANT STANDARDS AND REQUIREMENTS e.g. COUNCIL, NZBC, ALPINE STONE AND OTHER PRODUCTS DETAILS.

- ANY SCRIBERS, PEF ROD, RENDERS, SEALERS etc (OTHER THAN THE SEALER SCRATCH COAT APPLIED BY ALPINE STONE) REQUIRED AS PART OF THE CONSTRUCTION DETAIL BEFORE AND AFTER INSTALLATION WILL NOT BE DONE BY ALPINE STONE OR ITS INSTALLERS.







DWG - 11

PARALLEL APRON DETAIL

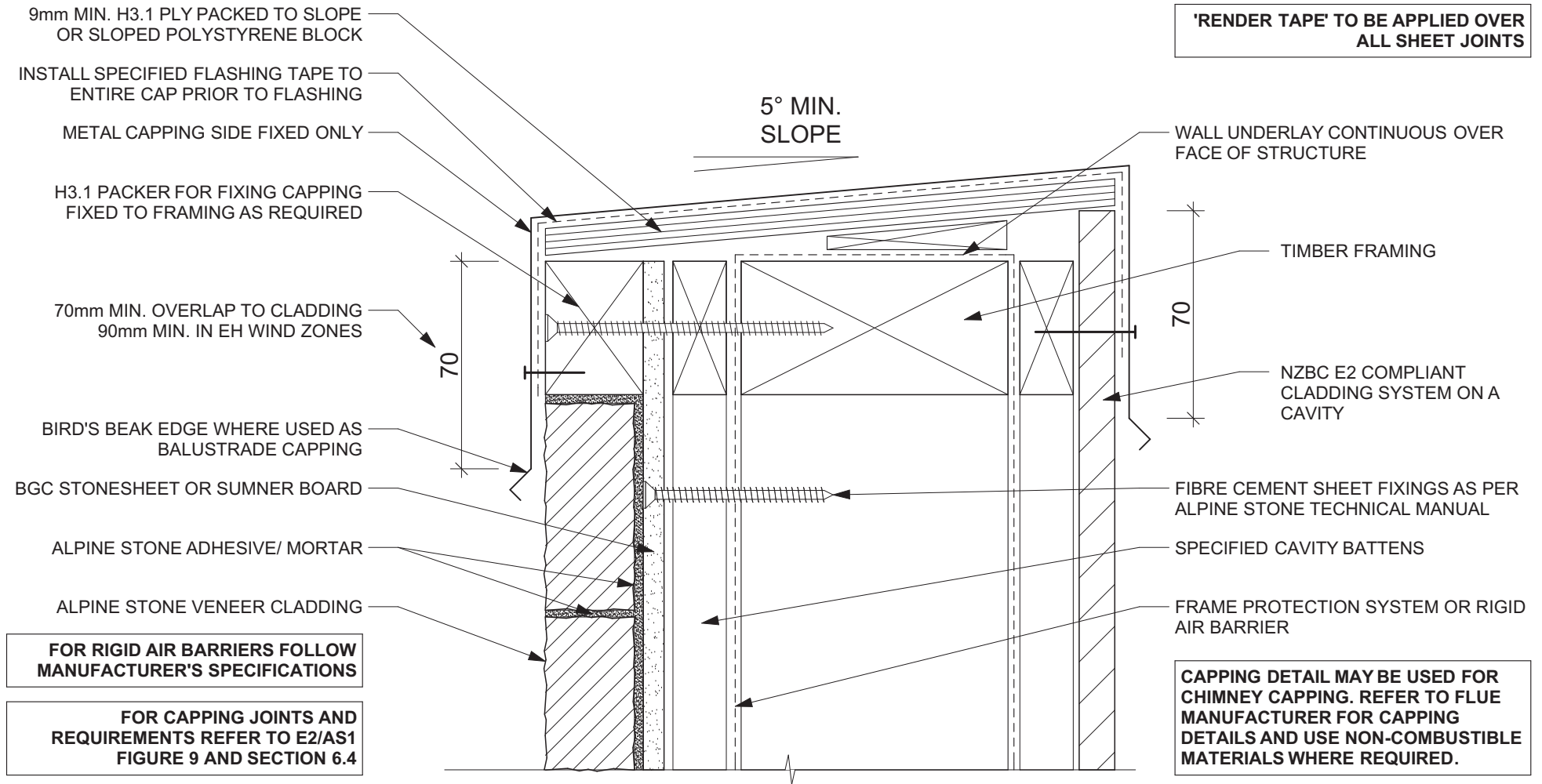
SCALE - 1:2

## ALPINE STONE VENEER CLADDING SYSTEM

VERSION - 16/03/2016

- THESE DRAWINGS MUST BE READ IN CONJUNCTION WITH THE LIST OF SPECIFIED/ACCEPTED PRODUCTS SUPPLIED WITH THE ALPINE STONE TECHNICAL MANUAL.
- SUBSTRATE TO BE PREPPED READY TO APPLY ALPINE STONE VENEER TO. THIS MUST COMPLY WITH ALL RELEVANT STANDARDS AND REQUIREMENTS e.g. COUNCIL, NZBC, ALPINE STONE AND OTHER PRODUCTS DETAILS.
- ANY SCRIBERS, PEF ROD, RENDERERS, SEALERS etc (OTHER THAN THE SEALER SCRATCH COAT APPLIED BY ALPINE STONE) REQUIRED AS PART OF THE CONSTRUCTION DETAIL BEFORE AND AFTER INSTALLATION WILL NOT BE DONE BY ALPINE STONE OR IT'S INSTALLERS.





DWG - 12

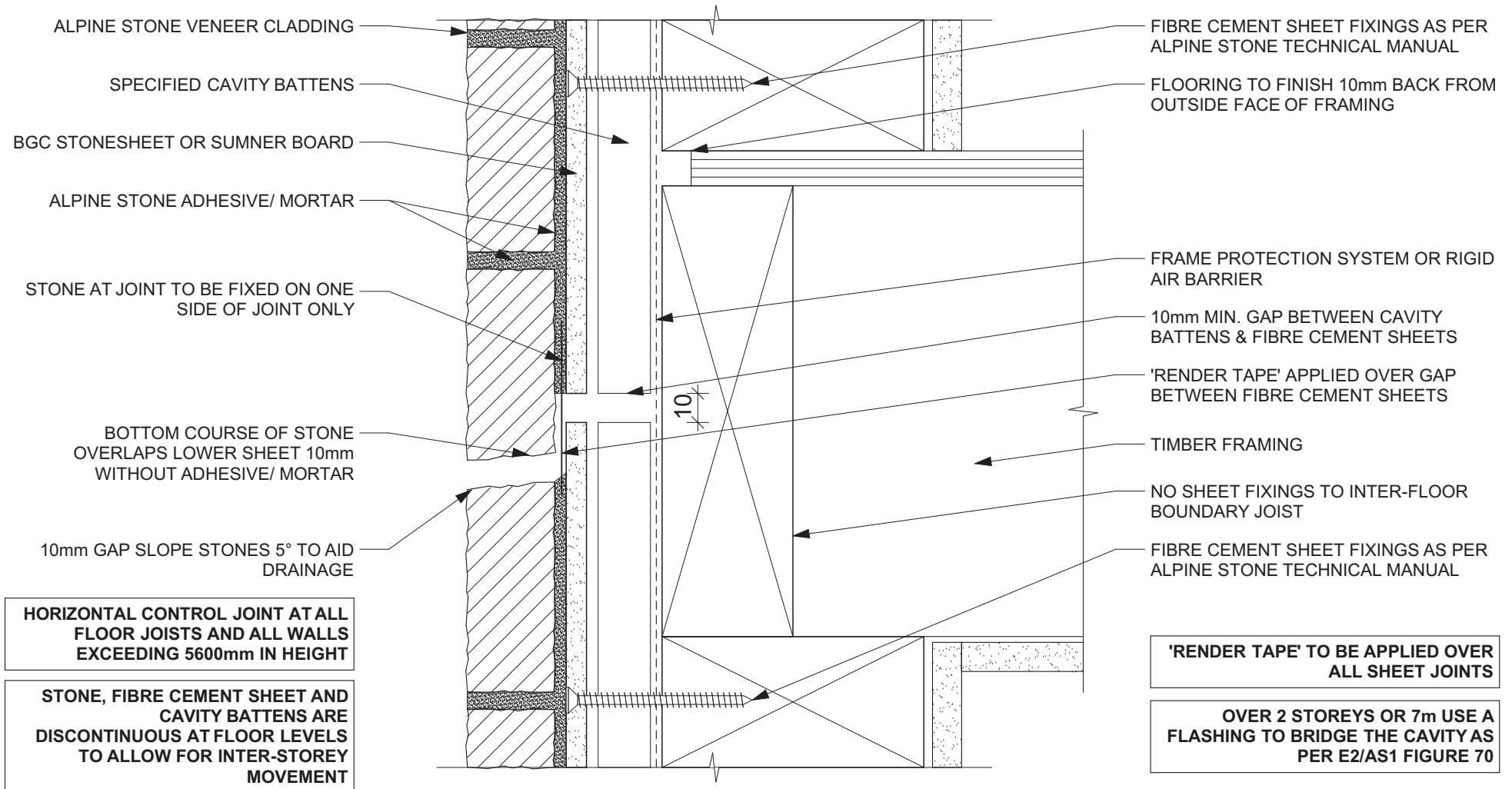
PARAPET/ BALUSTRADE DETAIL

SCALE - 1:2

## ALPINE STONE VENEER CLADDING SYSTEM VERSION - 16/03/2016

- THESE DRAWINGS MUST BE READ IN CONJUNCTION WITH THE LIST OF SPECIFIED/ACCEPTED PRODUCTS SUPPLIED WITH THE ALPINE STONE TECHNICAL MANUAL.
- SUBSTRATE TO BE PREPPED READY TO APPLY ALPINE STONE VENEER TO. THIS MUST COMPLY WITH ALL RELEVANT STANDARDS AND REQUIREMENTS e.g. COUNCIL, NZBC, ALPINE STONE AND OTHER PRODUCTS DETAILS.
- ANY SCRIBERS, PEF ROD, RENDERS, SEALERS etc (OTHER THAN THE SEALER SCRATCH COAT APPLIED BY ALPINE STONE) REQUIRED AS PART OF THE CONSTRUCTION DETAIL BEFORE AND AFTER INSTALLATION WILL NOT BE DONE BY ALPINE STONE OR ITS INSTALLERS.





DWG - 13

HORIZONTAL CONTROL JOINT

SCALE - 1:2

# ALPINE STONE VENEER CLADDING SYSTEM

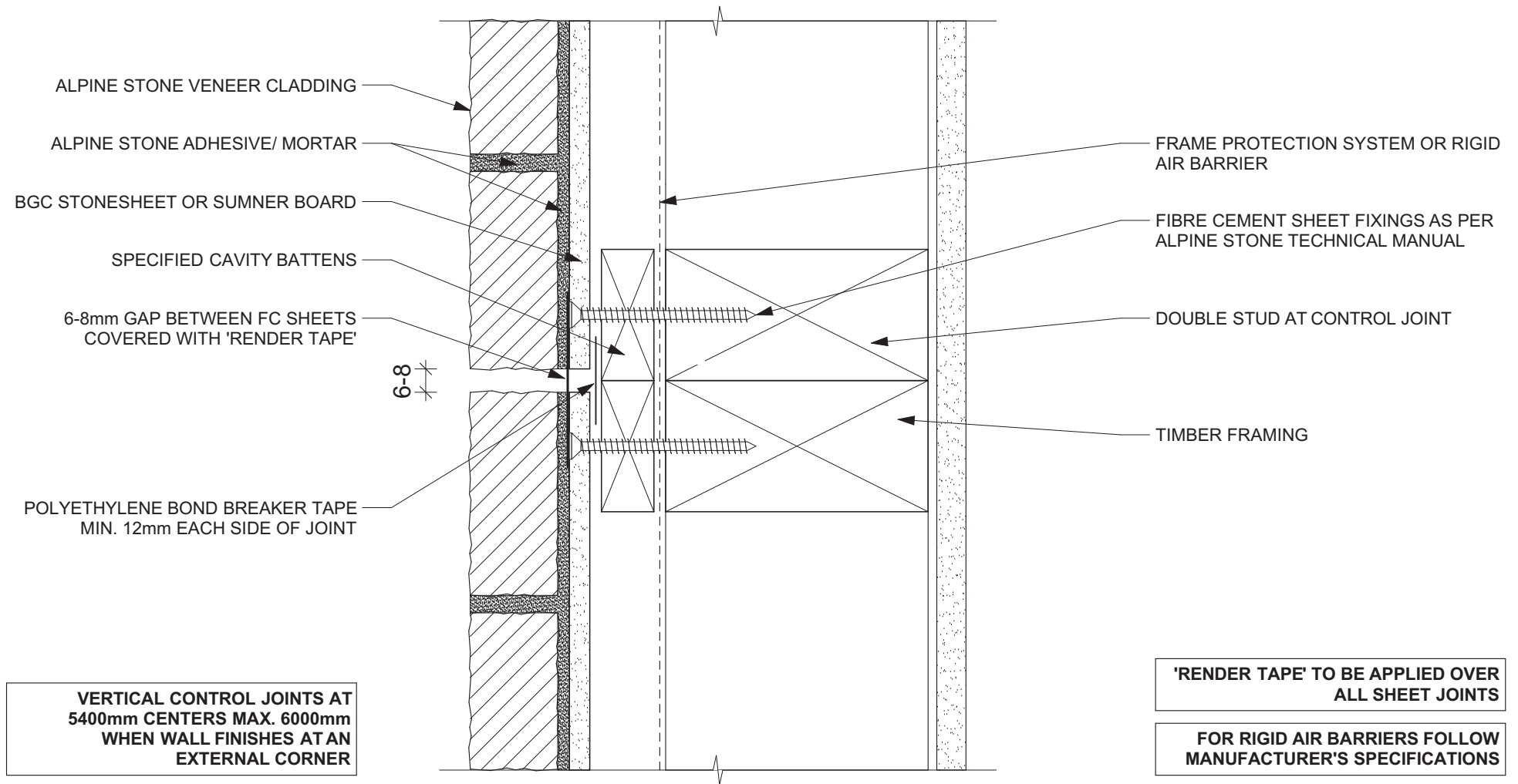
VERSION - 16/03/2016

- THESE DRAWINGS MUST BE READ IN CONJUNCTION WITH THE LIST OF SPECIFIED/ACCEPTED PRODUCTS SUPPLIED WITH THE ALPINE STONE TECHNICAL MANUAL.

- SUBSTRATE TO BE PREPPED READY TO APPLY ALPINE STONE VENEER TO. THIS MUST COMPLY WITH ALL RELEVANT STANDARDS AND REQUIREMENTS e.g. COUNCIL, NZBC, ALPINE STONE AND OTHER PRODUCTS DETAILS.

- ANY SCRIBERS, PEF ROD, RENDERERS, SEALERS etc (OTHER THAN THE SEALER SCRATCH COAT APPLIED BY ALPINE STONE) REQUIRED AS PART OF THE CONSTRUCTION DETAIL BEFORE AND AFTER INSTALLATION WILL NOT BE DONE BY ALPINE STONE OR ITS INSTALLERS.





DWG - 14

PLAN VIEW OF VERTICAL CONTROL JOINT DETAIL

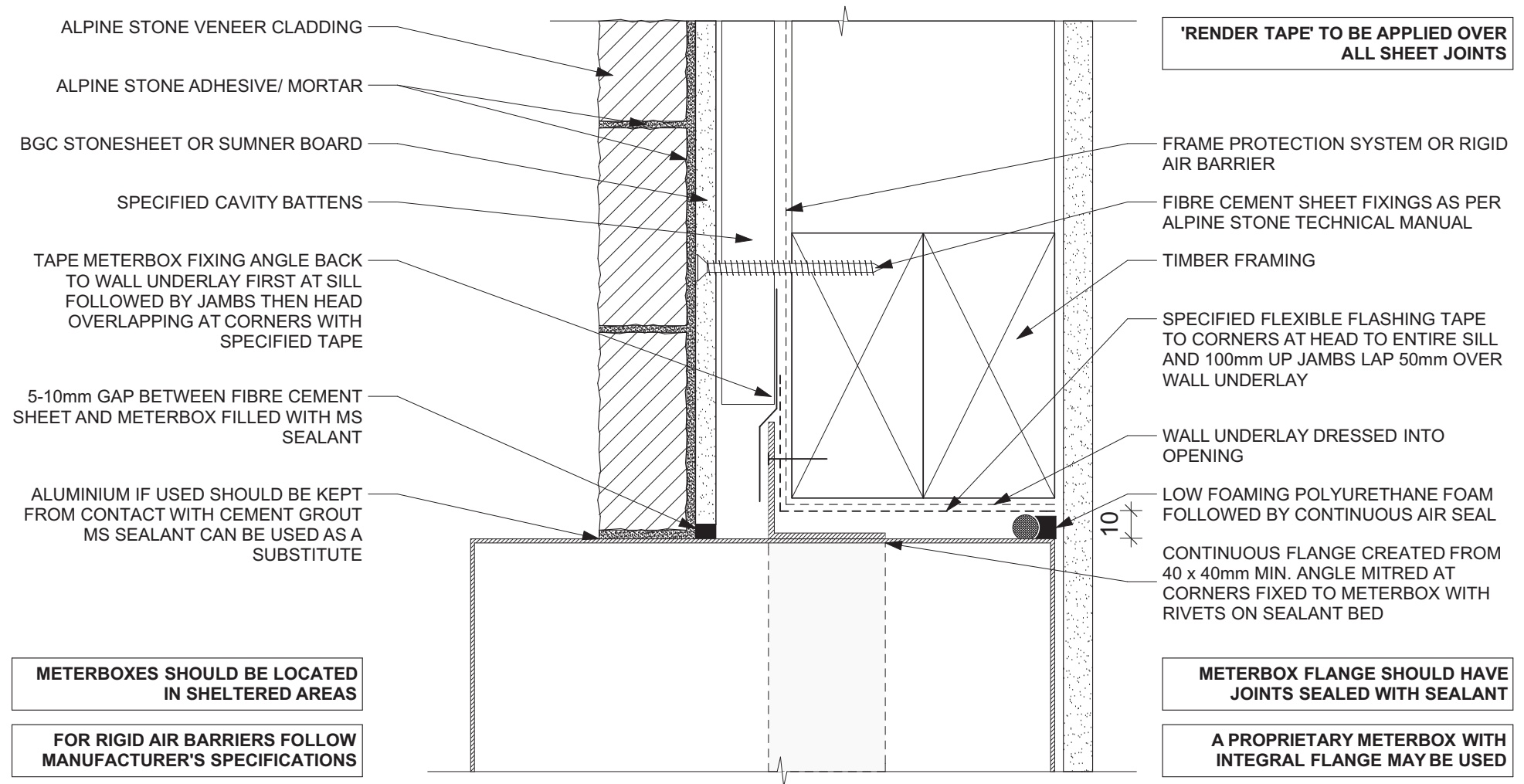
SCALE - 1:2

## ALPINE STONE VENEER CLADDING SYSTEM

VERSION - 16/03/2016

- THESE DRAWINGS MUST BE READ IN CONJUNCTION WITH THE LIST OF SPECIFIED/ACCEPTED PRODUCTS SUPPLIED WITH THE ALPINE STONE TECHNICAL MANUAL.
- SUBSTRATE TO BE PREPPED READY TO APPLY ALPINE STONE VENEER TO. THIS MUST COMPLY WITH ALL RELEVANT STANDARDS AND REQUIREMENTS e.g. COUNCIL, NZBC, ALPINE STONE AND OTHER PRODUCTS DETAILS.
- ANY SCRIBERS, PEF ROD, RENDERERS, SEALERS etc (OTHER THAN THE SEALER SCRATCH COAT APPLIED BY ALPINE STONE) REQUIRED AS PART OF THE CONSTRUCTION DETAIL BEFORE AND AFTER INSTALLATION WILL NOT BE DONE BY ALPINE STONE OR IT'S INSTALLERS.





DWG - 15

METERBOX DETAIL

SCALE - 1:2

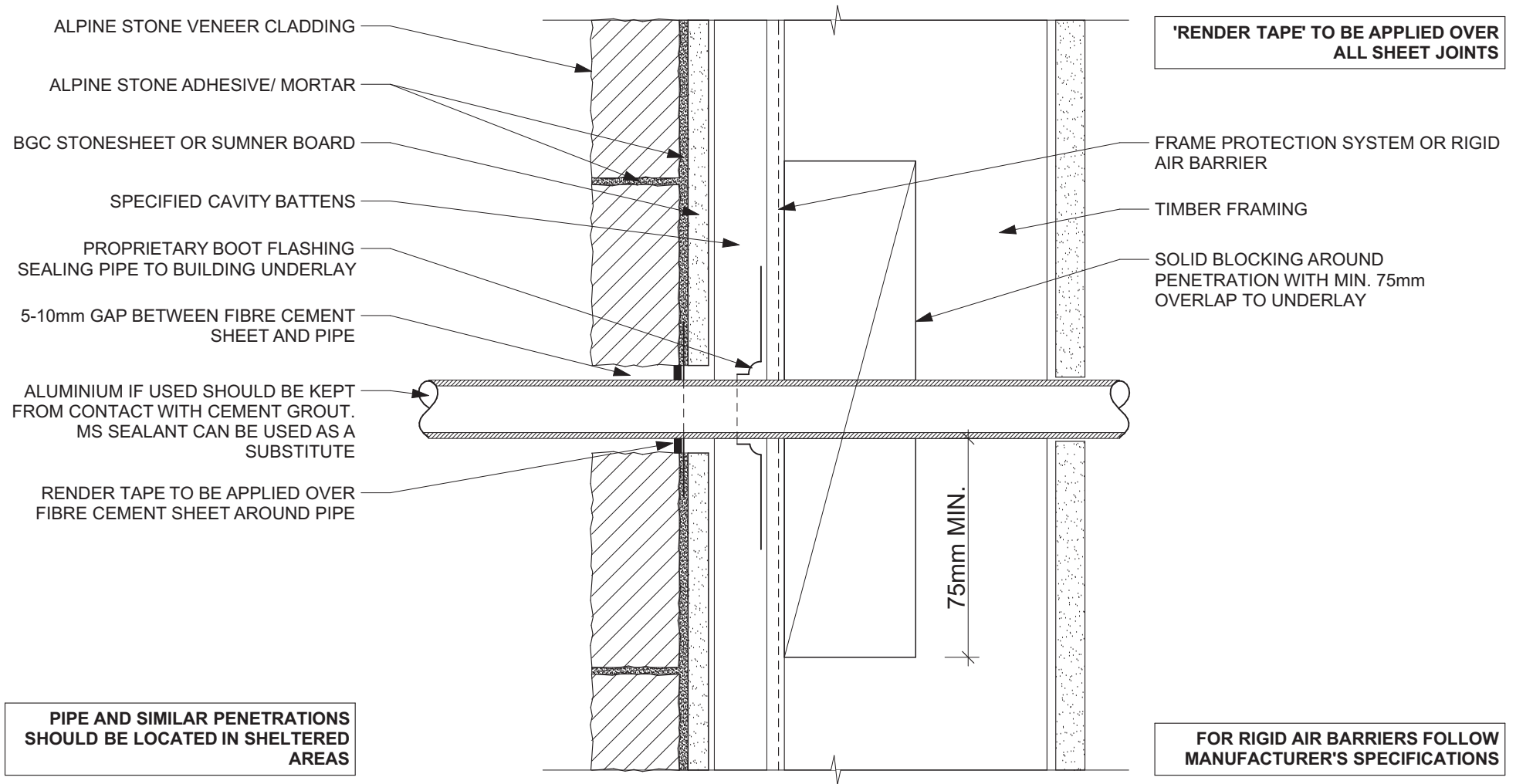
## ALPINE STONE VENEER CLADDING SYSTEM VERSION - 16/03/2016

- THESE DRAWINGS MUST BE READ IN CONJUNCTION WITH THE LIST OF SPECIFIED/ACCEPTED PRODUCTS SUPPLIED WITH THE ALPINE STONE TECHNICAL MANUAL.

- SUBSTRATE TO BE PREPPED READY TO APPLY ALPINE STONE VENEER TO. THIS MUST COMPLY WITH ALL RELEVANT STANDARDS AND REQUIREMENTS e.g. COUNCIL, NZBC, ALPINE STONE AND OTHER PRODUCTS DETAILS.

- ANY SCRIBERS, PEF ROD, RENDERS, SEALERS etc (OTHER THAN THE SEALER SCRATCH COAT APPLIED BY ALPINE STONE) REQUIRED AS PART OF THE CONSTRUCTION DETAIL BEFORE AND AFTER INSTALLATION WILL NOT BE DONE BY ALPINE STONE OR IT'S INSTALLERS.





DWG - 16

PENETRATION DETAIL

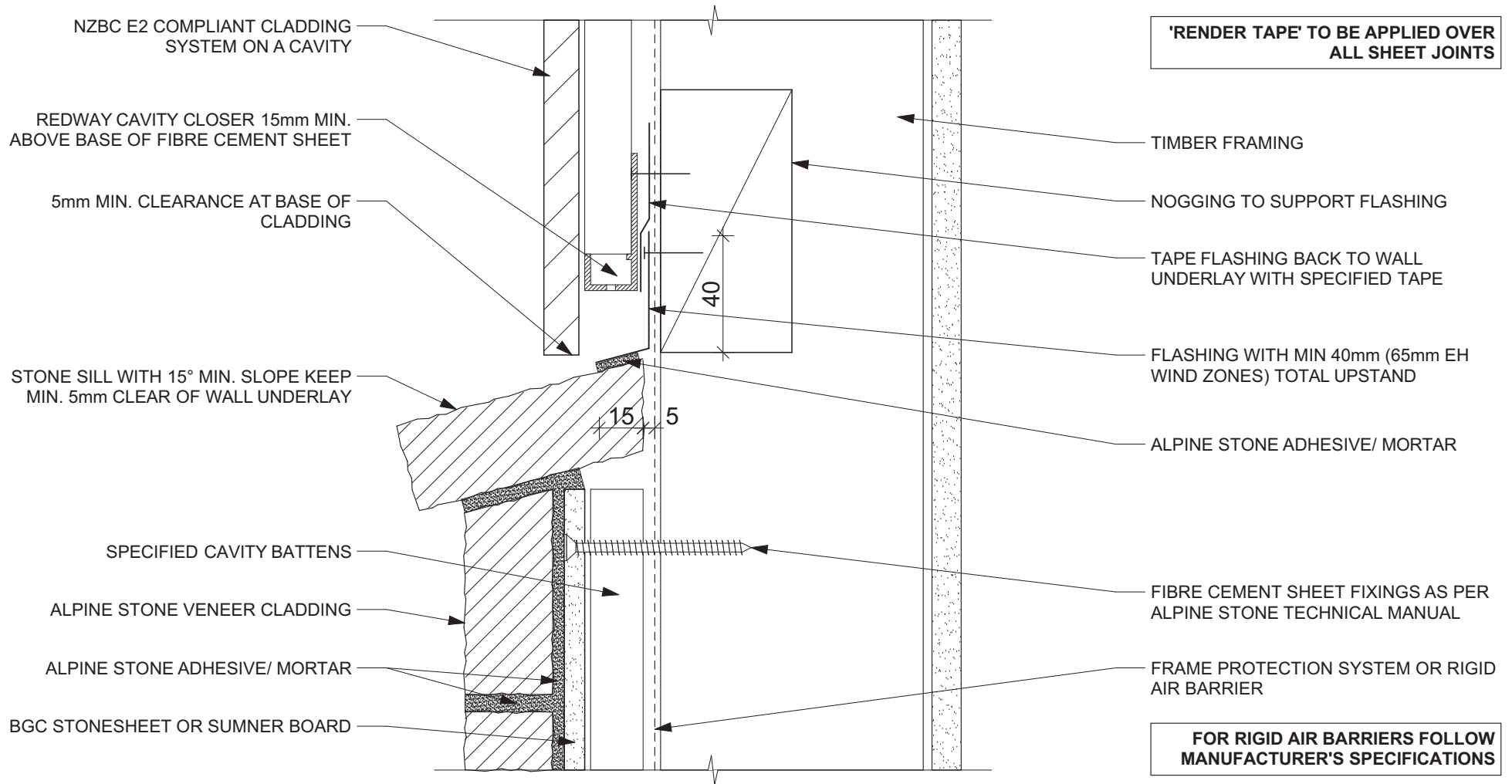
SCALE - 1:2

## ALPINE STONE VENEER CLADDING SYSTEM

VERSION - 16/03/2016

- THESE DRAWINGS MUST BE READ IN CONJUNCTION WITH THE LIST OF SPECIFIED/ACCEPTED PRODUCTS SUPPLIED WITH THE ALPINE STONE TECHNICAL MANUAL.
- SUBSTRATE TO BE PREPPED READY TO APPLY ALPINE STONE VENEER TO. THIS MUST COMPLY WITH ALL RELEVANT STANDARDS AND REQUIREMENTS e.g. COUNCIL, NZBC, ALPINE STONE AND OTHER PRODUCTS DETAILS.
- ANY SCRIBERS, PEF ROD, RENDERS, SEALERS etc (OTHER THAN THE SEALER SCRATCH COAT APPLIED BY ALPINE STONE) REQUIRED AS PART OF THE CONSTRUCTION DETAIL BEFORE AND AFTER INSTALLATION WILL NOT BE DONE BY ALPINE STONE OR IT'S INSTALLERS.





DWG - 17

HORIZONTAL JOINT WITH ALTERNATIVE CLADDING

SCALE - 1:2

## ALPINE STONE VENEER CLADDING SYSTEM VERSION - 16/03/2016

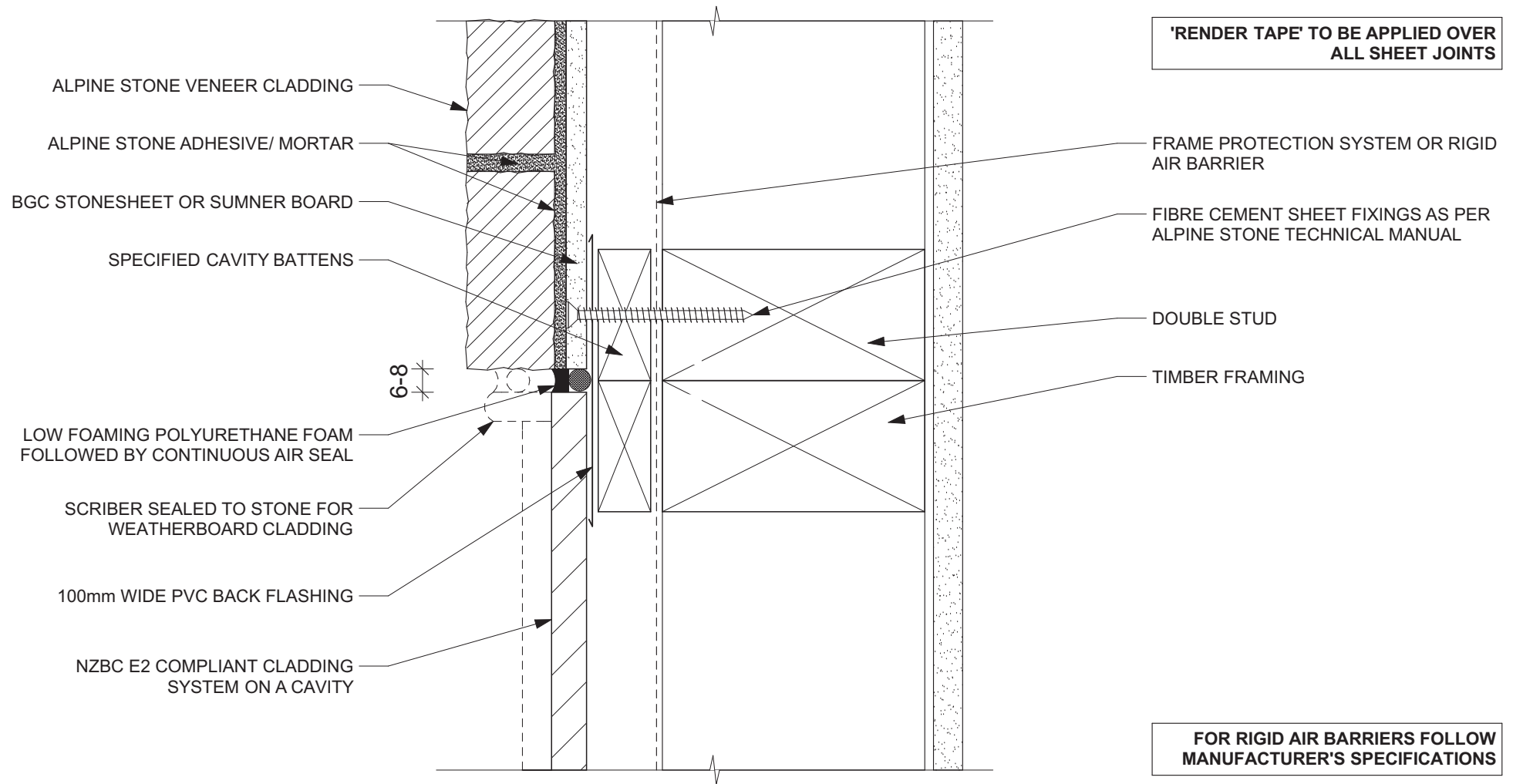
- THESE DRAWINGS MUST BE READ IN CONJUNCTION WITH THE LIST OF SPECIFIED/ACCEPTED PRODUCTS SUPPLIED WITH THE ALPINE STONE TECHNICAL MANUAL.

- SUBSTRATE TO BE PREPPED READY TO APPLY ALPINE STONE VENEER TO. THIS MUST COMPLY WITH ALL RELEVANT STANDARDS AND REQUIREMENTS e.g. COUNCIL, NZBC, ALPINE STONE AND OTHER PRODUCTS DETAILS.

- ANY SCRIBERS, PEF ROD, RENDERS, SEALERS etc (OTHER THAN THE SEALER SCRATCH COAT APPLIED BY ALPINE STONE) REQUIRED AS PART OF THE CONSTRUCTION DETAIL BEFORE AND AFTER INSTALLATION WILL NOT BE DONE BY ALPINE STONE OR ITS INSTALLERS.







DWG - 18

PLAN VIEW OF VERTICAL JOINT WITH ALTERNATIVE CLADDING

SCALE - 1:2

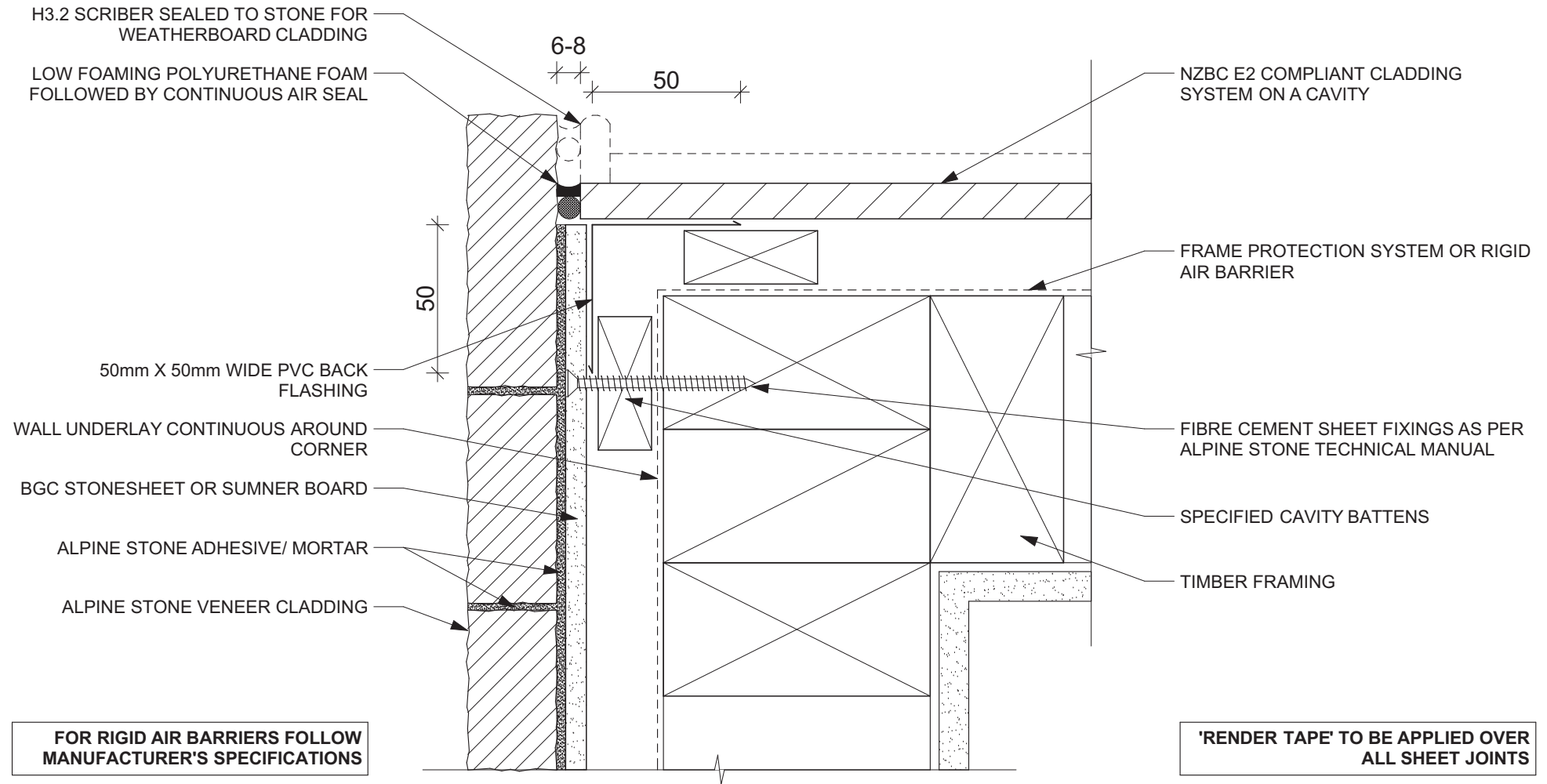
## ALPINE STONE VENEER CLADDING SYSTEM

VERSION - 16/03/2016

- THESE DRAWINGS MUST BE READ IN CONJUNCTION WITH THE LIST OF SPECIFIED/ACCEPTED PRODUCTS SUPPLIED WITH THE ALPINE STONE TECHNICAL MANUAL.
- SUBSTRATE TO BE PREPPED READY TO APPLY ALPINE STONE VENEER TO. THIS MUST COMPLY WITH ALL RELEVANT STANDARDS AND REQUIREMENTS e.g. COUNCIL, NZBC, ALPINE STONE AND OTHER PRODUCTS DETAILS.
- ANY SCRIBERS, PEF ROD, RENDERERS, SEALERS etc (OTHER THAN THE SEALER SCRATCH COAT APPLIED BY ALPINE STONE) REQUIRED AS PART OF THE CONSTRUCTION DETAIL BEFORE AND AFTER INSTALLATION WILL NOT BE DONE BY ALPINE STONE OR IT'S INSTALLERS.







DWG - 19 PLAN VIEW OF EXTERNAL CORNER JOINT WITH ALTERNATIVE CLADDING SCALE - 1:2

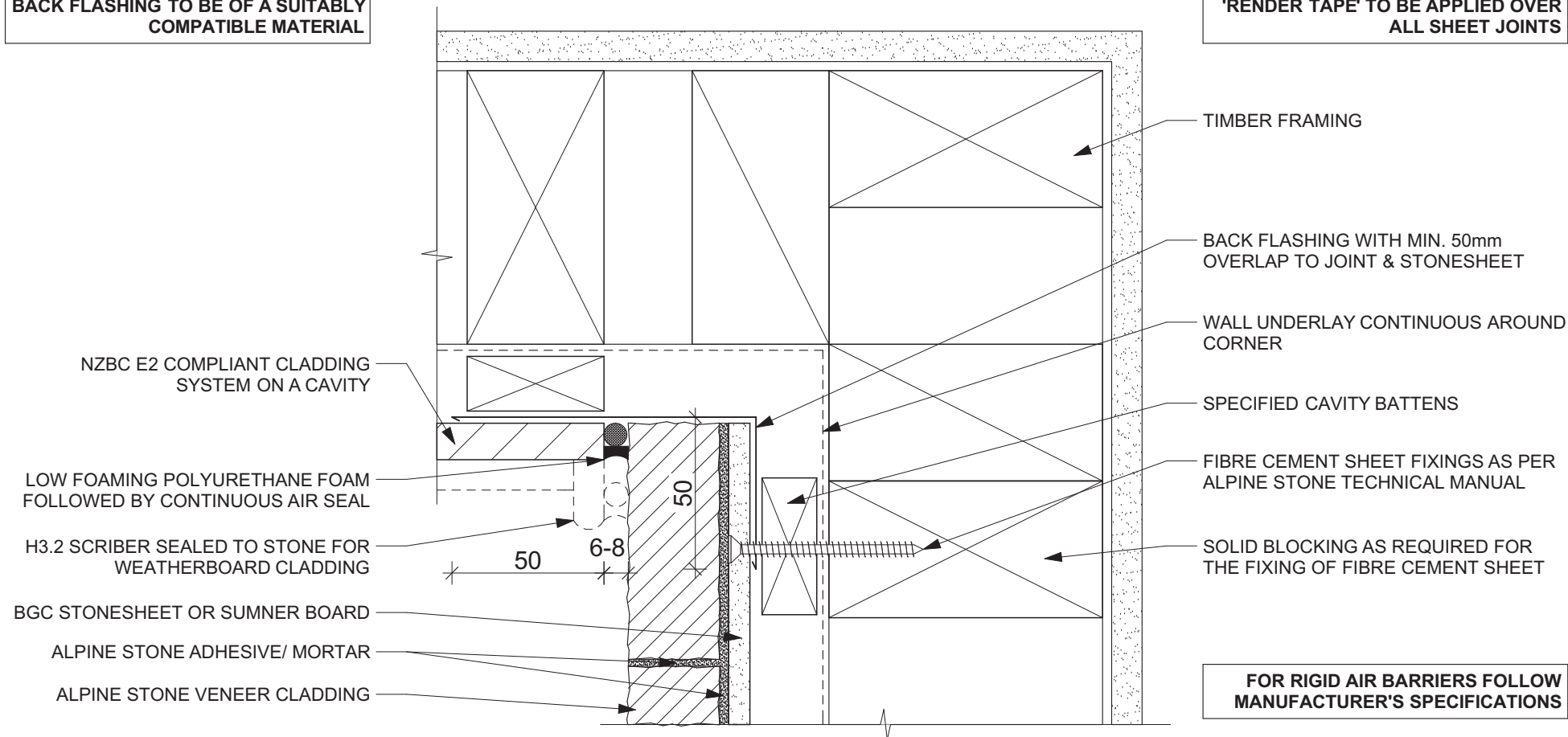
## ALPINE STONE VENEER CLADDING SYSTEM VERSION - 16/03/2016

- THESE DRAWINGS MUST BE READ IN CONJUNCTION WITH THE LIST OF SPECIFIED/ACCEPTED PRODUCTS SUPPLIED WITH THE ALPINE STONE TECHNICAL MANUAL.
- SUBSTRATE TO BE PREPPED READY TO APPLY ALPINE STONE VENEER TO. THIS MUST COMPLY WITH ALL RELEVANT STANDARDS AND REQUIREMENTS e.g. COUNCIL, NZBC, ALPINE STONE AND OTHER PRODUCTS DETAILS.
- ANY SCRIBERS, PEF ROD, RENDERS, SEALERS etc (OTHER THAN THE SEALER SCRATCH COAT APPLIED BY ALPINE STONE) REQUIRED AS PART OF THE CONSTRUCTION DETAIL BEFORE AND AFTER INSTALLATION WILL NOT BE DONE BY ALPINE STONE OR IT'S INSTALLERS.



BACK FLASHING TO BE OF A SUITABLY  
COMPATIBLE MATERIAL

'RENDER TAPE' TO BE APPLIED OVER  
ALL SHEET JOINTS



DWG - 20      PLAN VIEW OF INTERNAL CORNER JOINT WITH ALTERNATE CLADDING      SCALE - 1:2

## ALPINE STONE VENEER CLADDING SYSTEM VERSION - 16/03/2016

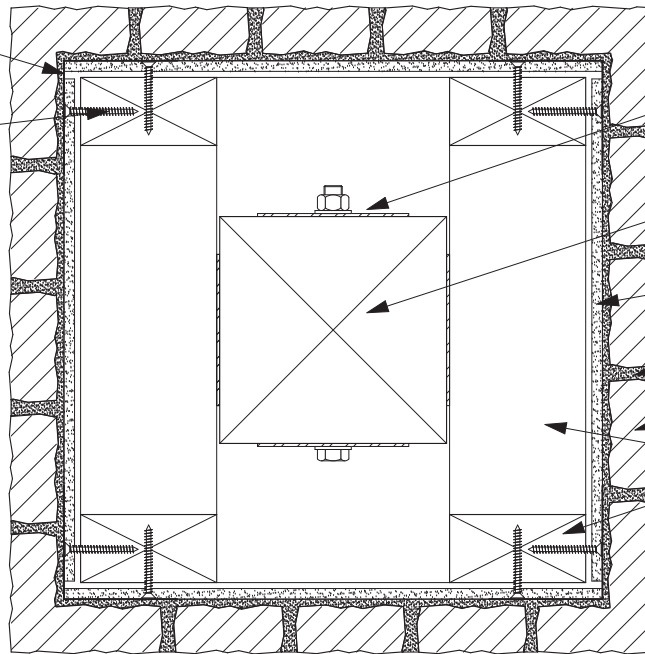
- THESE DRAWINGS MUST BE READ IN CONJUNCTION WITH THE LIST OF SPECIFIED/ACCEPTED PRODUCTS SUPPLIED WITH THE ALPINE STONE TECHNICAL MANUAL.  
- SUBSTRATE TO BE PREPPED READY TO APPLY ALPINE STONE VENEER TO. THIS MUST COMPLY WITH ALL RELEVANT STANDARDS AND REQUIREMENTS e.g. COUNCIL, NZBC, ALPINE STONE AND OTHER PRODUCTS DETAILS.  
- ANY SCRIBERS, PEF ROD, RENDERERS, SEALERS etc (OTHER THAN THE SEALER SCRATCH COAT APPLIED BY ALPINE STONE) REQUIRED AS PART OF THE CONSTRUCTION DETAIL BEFORE AND AFTER INSTALLATION WILL NOT BE DONE BY ALPINE STONE OR IT'S INSTALLERS.



5mm GAP BETWEEN SHEETS, JOINT  
SEALED WITH RENDER TAPE

FIBRE CEMENT SHEET FIXINGS AS  
PER ALPINE STONE TECHNICAL  
MANUAL

\*\*POST MAY BE EMBEDDED IN  
CONCRETE AS AN ALTERNATIVE TO  
BRACKET



POST BRACKET AND FIXING TO  
SPECIFIC DESIGN

\*\*H5 TREATED TIMBER POST OR STEEL  
POST TO SPECIFIC DESIGN

BGC STONESHEET OR SUMNER BOARD

ALPINE STONE ADHESIVE/ MORTAR

ALPINE STONE VENEER  
CLADDING

H3.2 TIMBER FRAMING

DWG - 21

PLAN VIEW OF COLUMN DETAIL

1:5

## ALPINE STONE VENEER CLADDING SYSTEM

VERSION - 16/03/2016

- THESE DRAWINGS MUST BE READ IN CONJUNCTION WITH THE LIST OF SPECIFIED/ACCEPTED PRODUCTS SUPPLIED WITH THE ALPINE STONE TECHNICAL MANUAL.
- SUBSTRATE TO BE PREPPED READY TO APPLY ALPINE STONE VENEER TO. THIS MUST COMPLY WITH ALL RELEVANT STANDARDS AND REQUIREMENTS e.g. COUNCIL, NZBC, ALPINE STONE AND OTHER PRODUCTS DETAILS.
- ANY SCRIBERS, PEF ROD, RENDERS, SEALERS etc (OTHER THAN THE SEALER SCRATCH COAT APPLIED BY ALPINE STONE) REQUIRED AS PART OF THE CONSTRUCTION DETAIL BEFORE AND AFTER INSTALLATION WILL NOT BE DONE BY ALPINE STONE OR IT'S INSTALLERS.



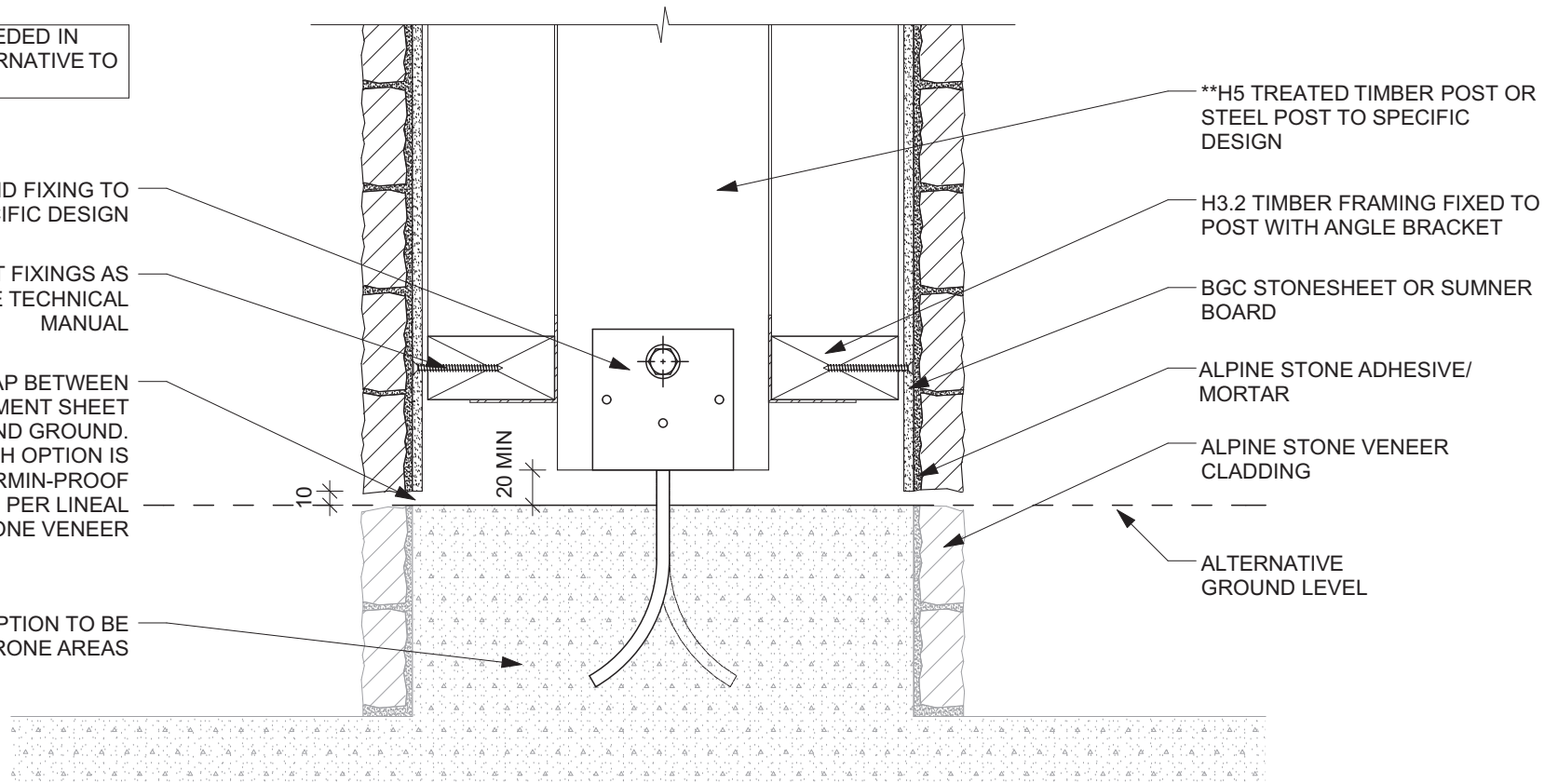
\*\*POST MAY BE EMBEDDED IN CONCRETE AS AN ALTERNATIVE TO BRACKET

POST BRACKET AND FIXING TO SPECIFIC DESIGN

FIBRE CEMENT SHEET FIXINGS AS PER ALPINE STONE TECHNICAL MANUAL

PROVIDE 10mm MIN GAP BETWEEN BOTTOM OF FIBRE CEMENT SHEET AND GROUND. WHEN CONCRETE PLINTH OPTION IS USED, PROVIDE VERMIN-PROOF VENT, MIN 1000mm<sup>2</sup> PER LINEAL METRE OF STONE VENEER

CONCRETE PLINTH OPTION TO BE USED IN FLOOD PRONE AREAS



\*\*H5 TREATED TIMBER POST OR STEEL POST TO SPECIFIC DESIGN

H3.2 TIMBER FRAMING FIXED TO POST WITH ANGLE BRACKET

BGC STONESHEET OR SUMNER BOARD

ALPINE STONE ADHESIVE/ MORTAR

ALPINE STONE VENEER CLADDING

ALTERNATIVE GROUND LEVEL

DWG - 22

COLUMN BASE DETAIL

1:5

## ALPINE STONE VENEER CLADDING SYSTEM

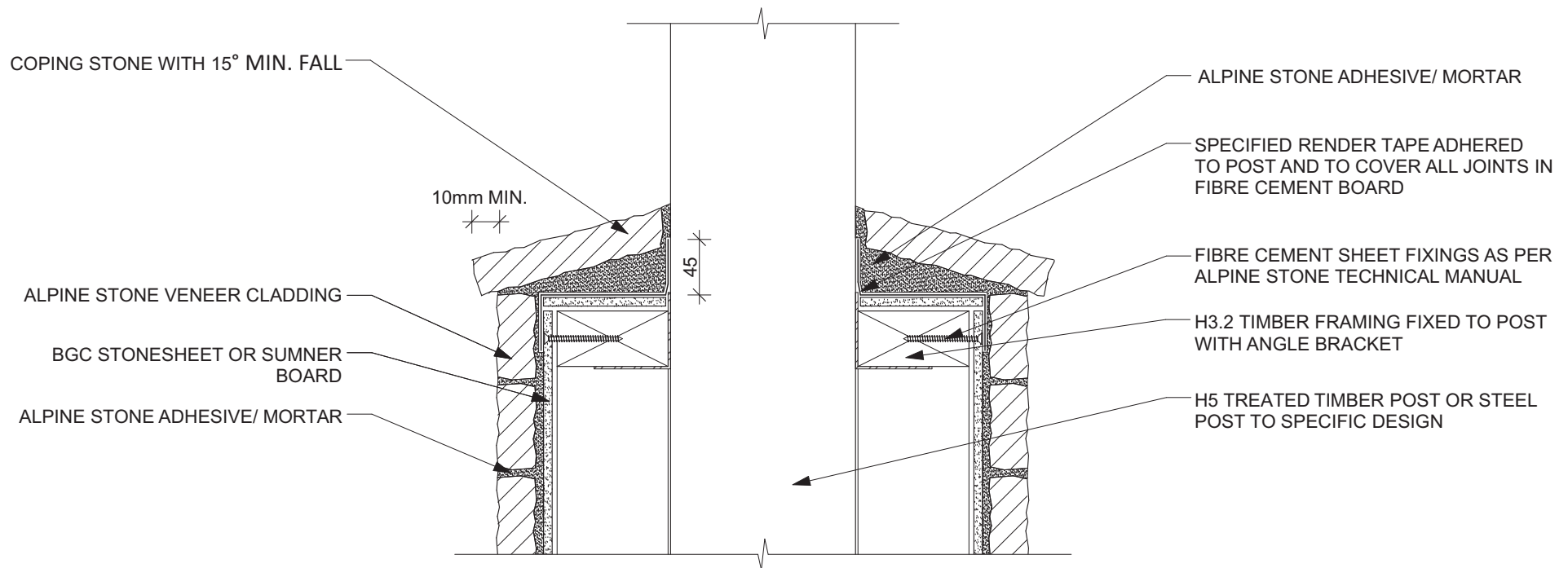
VERSION - 16/03/2016

- THESE DRAWINGS MUST BE READ IN CONJUNCTION WITH THE LIST OF SPECIFIED/ACCEPTED PRODUCTS SUPPLIED WITH THE ALPINE STONE TECHNICAL MANUAL.

- SUBSTRATE TO BE PREPPED READY TO APPLY ALPINE STONE VENEER TO. THIS MUST COMPLY WITH ALL RELEVANT STANDARDS AND REQUIREMENTS e.g. COUNCIL, NZBC, ALPINE STONE AND OTHER PRODUCTS DETAILS.

- ANY SCRIBERS, PEF ROD, RENDERS, SEALERS etc (OTHER THAN THE SEALER SCRATCH COAT APPLIED BY ALPINE STONE) REQUIRED AS PART OF THE CONSTRUCTION DETAIL BEFORE AND AFTER INSTALLATION WILL NOT BE DONE BY ALPINE STONE OR IT'S INSTALLERS.





DWG - 23

HALF COLUMN DETAIL

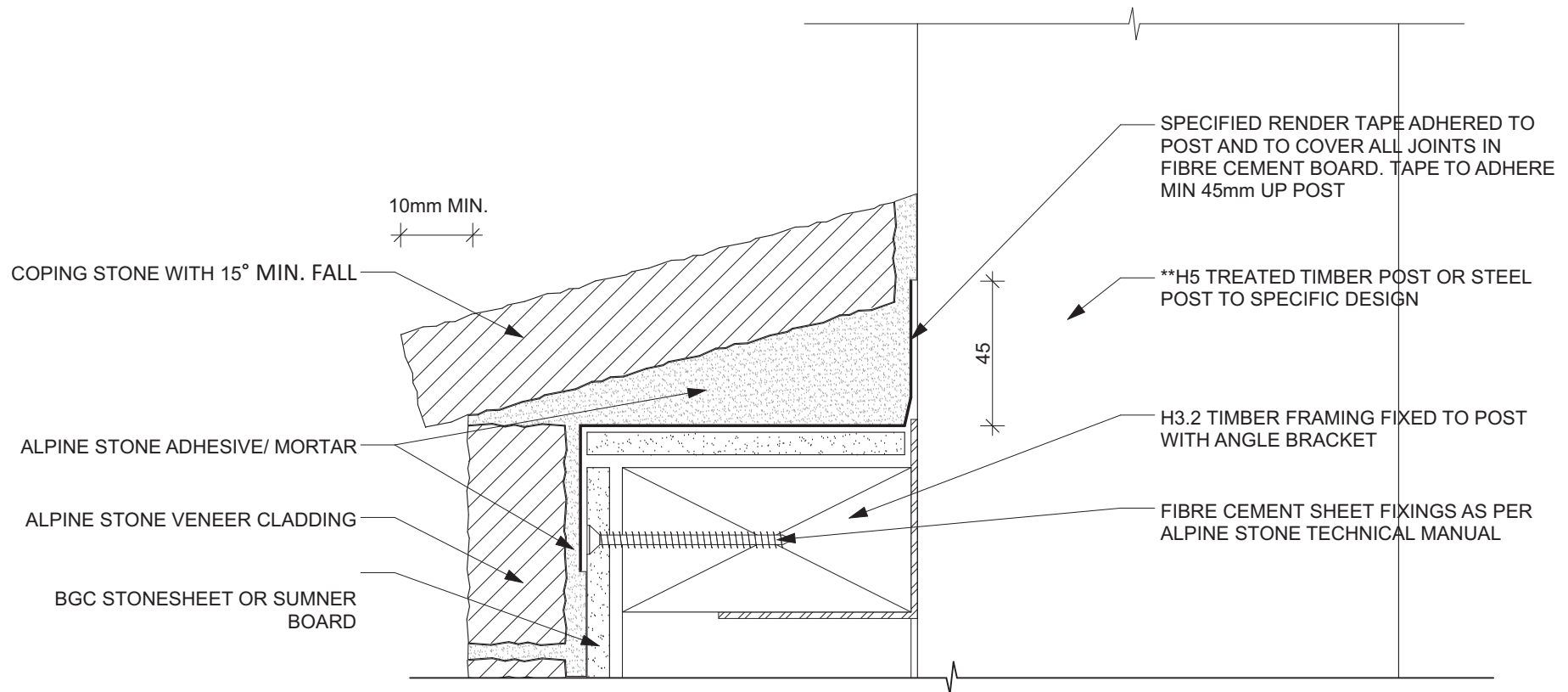
1:5

## ALPINE STONE VENEER CLADDING SYSTEM

VERSION - 16/03/2016

- THESE DRAWINGS MUST BE READ IN CONJUNCTION WITH THE LIST OF SPECIFIED/ACCEPTED PRODUCTS SUPPLIED WITH THE ALPINE STONE TECHNICAL MANUAL.
- SUBSTRATE TO BE PREPPED READY TO APPLY ALPINE STONE VENEER TO. THIS MUST COMPLY WITH ALL RELEVANT STANDARDS AND REQUIREMENTS e.g. COUNCIL, NZBC, ALPINE STONE AND OTHER PRODUCTS DETAILS.
- ANY SCRIBERS, PEF ROD, RENDERS, SEALERS etc (OTHER THAN THE SEALER SCRATCH COAT APPLIED BY ALPINE STONE) REQUIRED AS PART OF THE CONSTRUCTION DETAIL BEFORE AND AFTER INSTALLATION WILL NOT BE DONE BY ALPINE STONE OR IT'S INSTALLERS.





DWG - 24

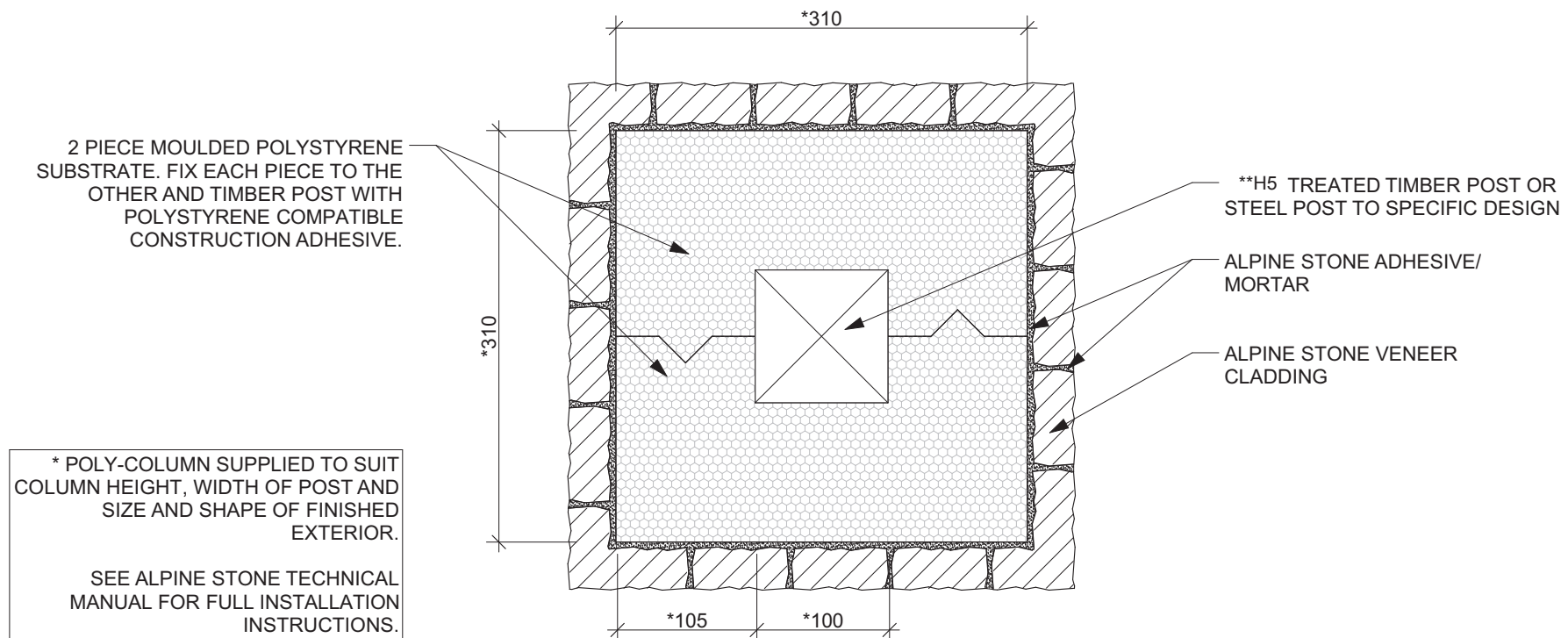
HALF COLUMN CAPPING DETAIL

1:2

## ALPINE STONE VENEER CLADDING SYSTEM VERSION - 16/03/2016

- THESE DRAWINGS MUST BE READ IN CONJUNCTION WITH THE LIST OF SPECIFIED/ACCEPTED PRODUCTS SUPPLIED WITH THE ALPINE STONE TECHNICAL MANUAL.
- SUBSTRATE TO BE PREPPED READY TO APPLY ALPINE STONE VENEER TO. THIS MUST COMPLY WITH ALL RELEVANT STANDARDS AND REQUIREMENTS e.g. COUNCIL, NZBC, ALPINE STONE AND OTHER PRODUCTS DETAILS.
- ANY SCRIBERS, PEF ROD, RENDERS, SEALERS etc (OTHER THAN THE SEALER SCRATCH COAT APPLIED BY ALPINE STONE) REQUIRED AS PART OF THE CONSTRUCTION DETAIL BEFORE AND AFTER INSTALLATION WILL NOT BE DONE BY ALPINE STONE OR IT'S INSTALLERS.





Note: PROVIDE MINIMUM 5MM GAP BETWEEN BOTTOM OF POLY/STONE VENEER COLUMN AND GROUND USE, PERMANENT PACKERS/FIXING TO MAINTAIN GAP

DWG - 25

PLAN VIEW OF POLY-COLUMN DETAIL

1:5

## ALPINE STONE VENEER CLADDING SYSTEM VERSION - 16/03/2016

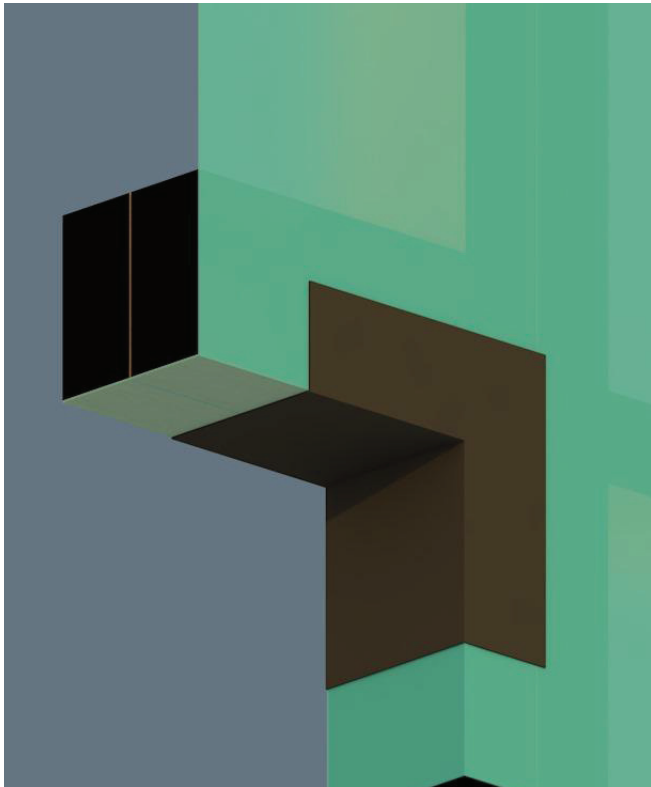
- THESE DRAWINGS MUST BE READ IN CONJUNCTION WITH THE LIST OF SPECIFIED/ACCEPTED PRODUCTS SUPPLIED WITH THE ALPINE STONE TECHNICAL MANUAL.

- SUBSTRATE TO BE PREPPED READY TO APPLY ALPINE STONE VENEER TO. THIS MUST COMPLY WITH ALL RELEVANT STANDARDS AND REQUIREMENTS e.g. COUNCIL, NZBC, ALPINE STONE AND OTHER PRODUCTS DETAILS.

- ANY SCRIBERS, PEF ROD, RENDERS, SEALERS etc (OTHER THAN THE SEALER SCRATCH COAT APPLIED BY ALPINE STONE) REQUIRED AS PART OF THE CONSTRUCTION DETAIL BEFORE AND AFTER INSTALLATION WILL NOT BE DONE BY ALPINE STONE OR IT'S INSTALLERS.

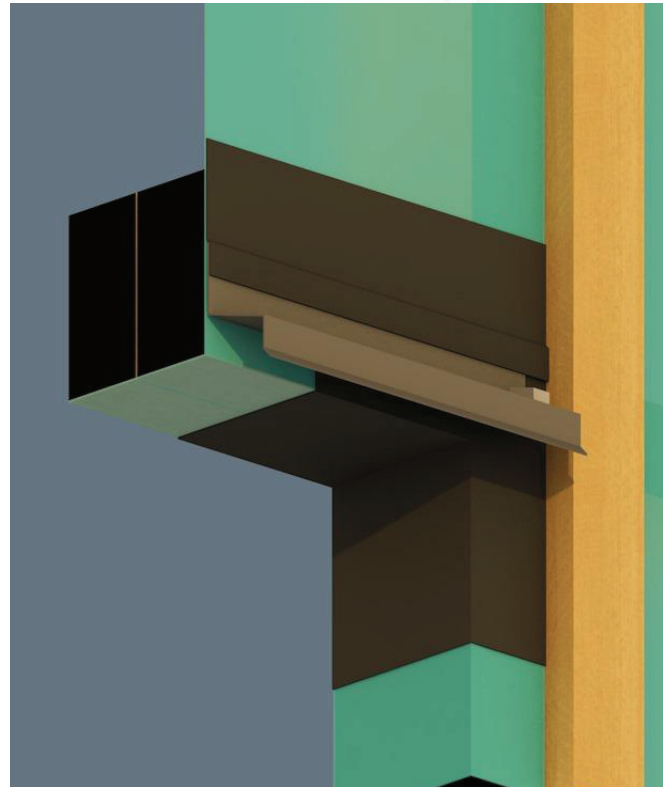






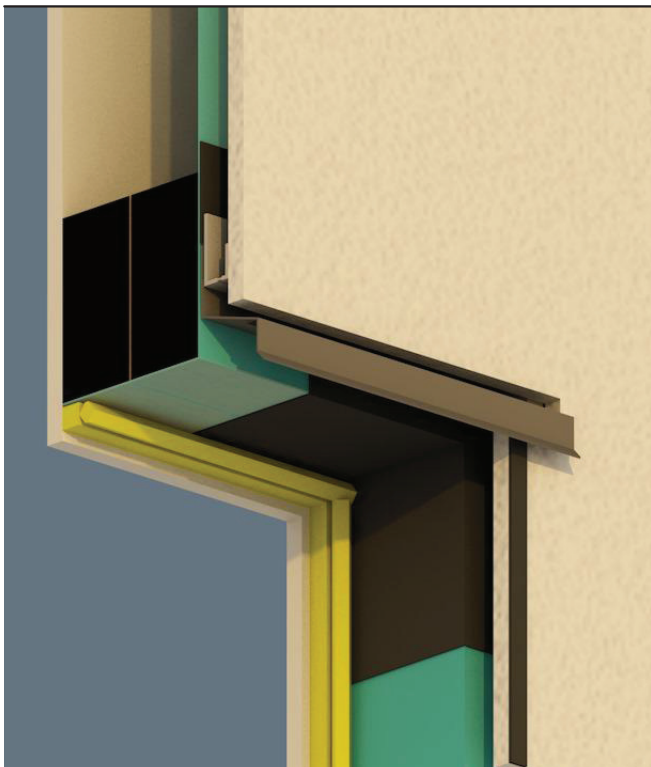
1. TIMBER FRAMING INSTALLED
2. WALL UNDERLAY RUN HORIZONTALLY & DRESSED INTO WINDOW/ DOOR OPENING
3. SPECIFIED FLEXIBLE FLASHING TAPE TO CORNERS AT HEAD AND JAMBS

HEAD : WRAP &amp; TAPE



4. HEAD FLASHING FIXED WITH PROPRIETARY STOP ENDS INSTALLED
5. TOP EDGE OF FLASHING TAPED BACK TO WALL UNDERLAY WITH SPECIFIED FLEXIBLE FLASHING TAPE
6. CAVITY BATTENS INSTALLED

HEAD : FLASHING



7. INSTALL CAVITY CLOSER THEN INSTALL FIBRE CEMENT SHEET AROUND HEAD FLASHING
8. INSTALL SPECIFIED FOAM TAPE ONTO FIBRE CEMENT SHEET AT JAMBS
9. AIR SEAL SHOWN IS INSTALLED AFTER FIXING OF WINDOW

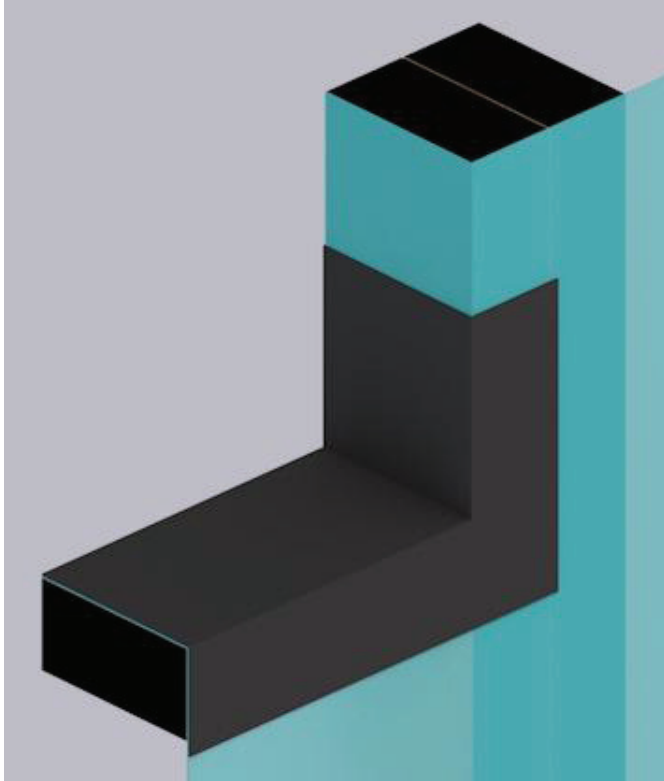
HEAD : FIBRE CEMENT SHEET



10. APPLY SPECIFIED FOAM TAPE TO HEAD OF JOINERY AND INSTALL JOINERY UNDER HEAD FLASHING AND FIX AS REQUIRED
11. APPLY STONE TO FIBRE CEMENT SHEET WITH ALPINE STONE ADHESIVE AND SEAL JAMB WITH MS SEALANT

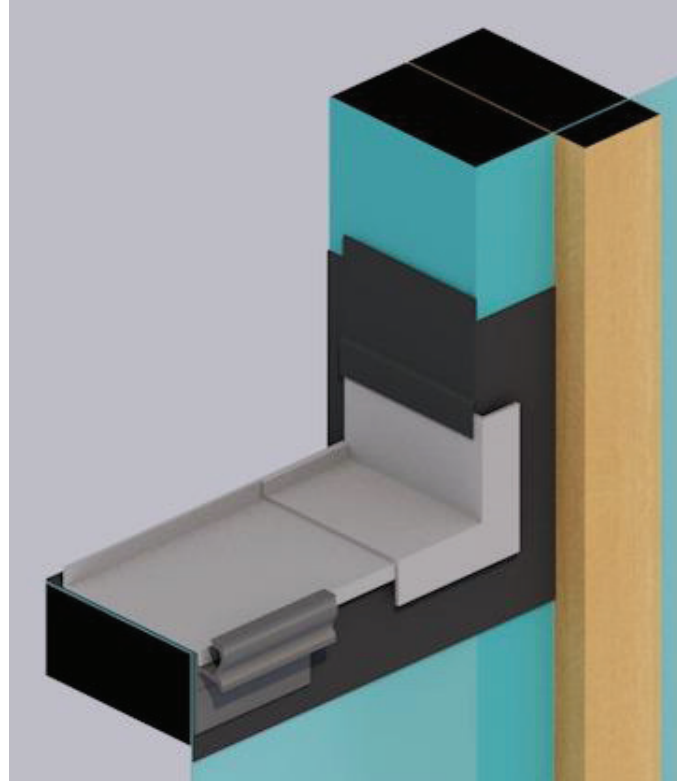
HEAD : FINISHED WALL





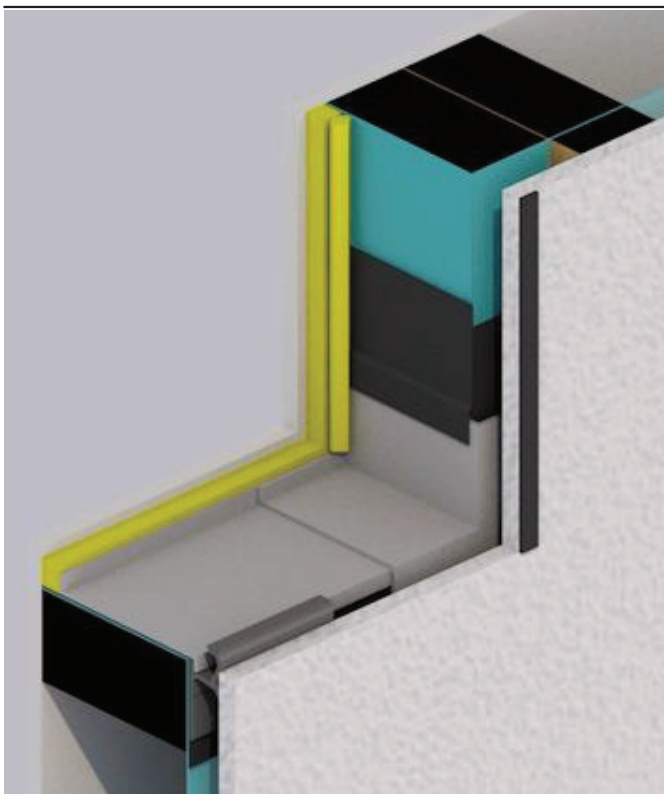
1. TIMBER FRAMING INSTALLED
2. WALL UNDERLAY RUN HORIZONTALLY & DRESSED INTO WINDOW/ DOOR OPENING
3. SPECIFIED FLEXIBLE FLASHING TAPE TO ENTIRE SILL AND 100mm UP AT JAMBS

SILL : WRAP &amp; TAPE



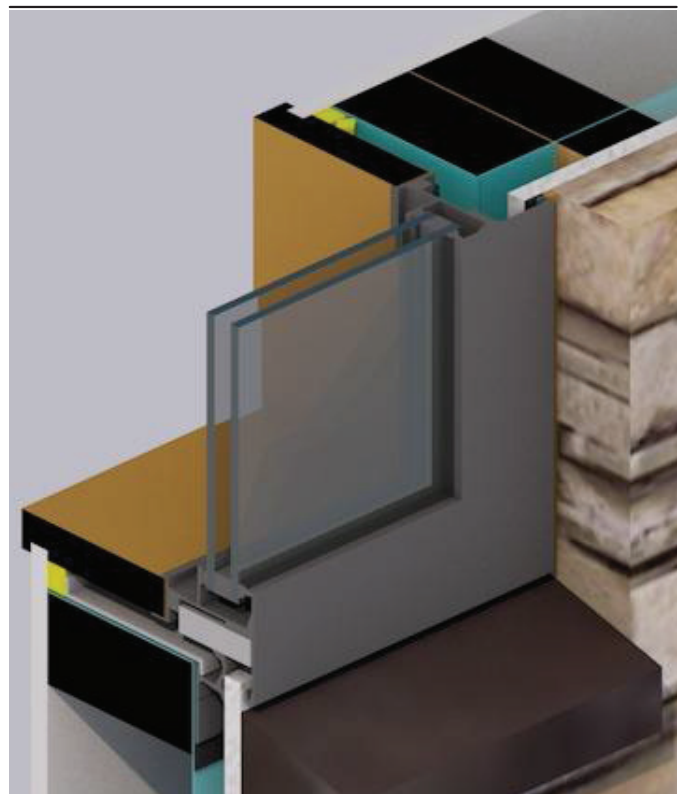
4. REDWAY SILL TRAY ADHERED TO SILL TRAY ENDCAPS AND INSTALLED TO SILL TRIMMER WITH WANZ BAR
5. TOP EDGE OF SILL END CAPS TAPED TO JAMB WITH SPECIFIED FLEXIBLE FLASHING TAPE
6. CAVITY BATTENS INSTALLED

SILL : TRAY &amp; WANZ BAR



7. STONE SHEET FIXED
8. 5mm THICK SPECIFIED FOAM TAPE INSTALLED ONTO STONESHEET AT JAMBS
9. AIR SEAL SHOWN IS INSTALLED AFTER FIXING OF WINDOW

SILL : FIBRE CEMENT SHEET



10. WINDOW SUPPORT BLOCKS FITTED AND JOINERY INSTALLED AND FIXED AS REQUIRED
12. STONE ADHERED TO STONE SHEET WITH ALPINE STONE ADHESIVE AND SEAL JAMB WITH MS SEALANT

SILL : FINISHED WALL